

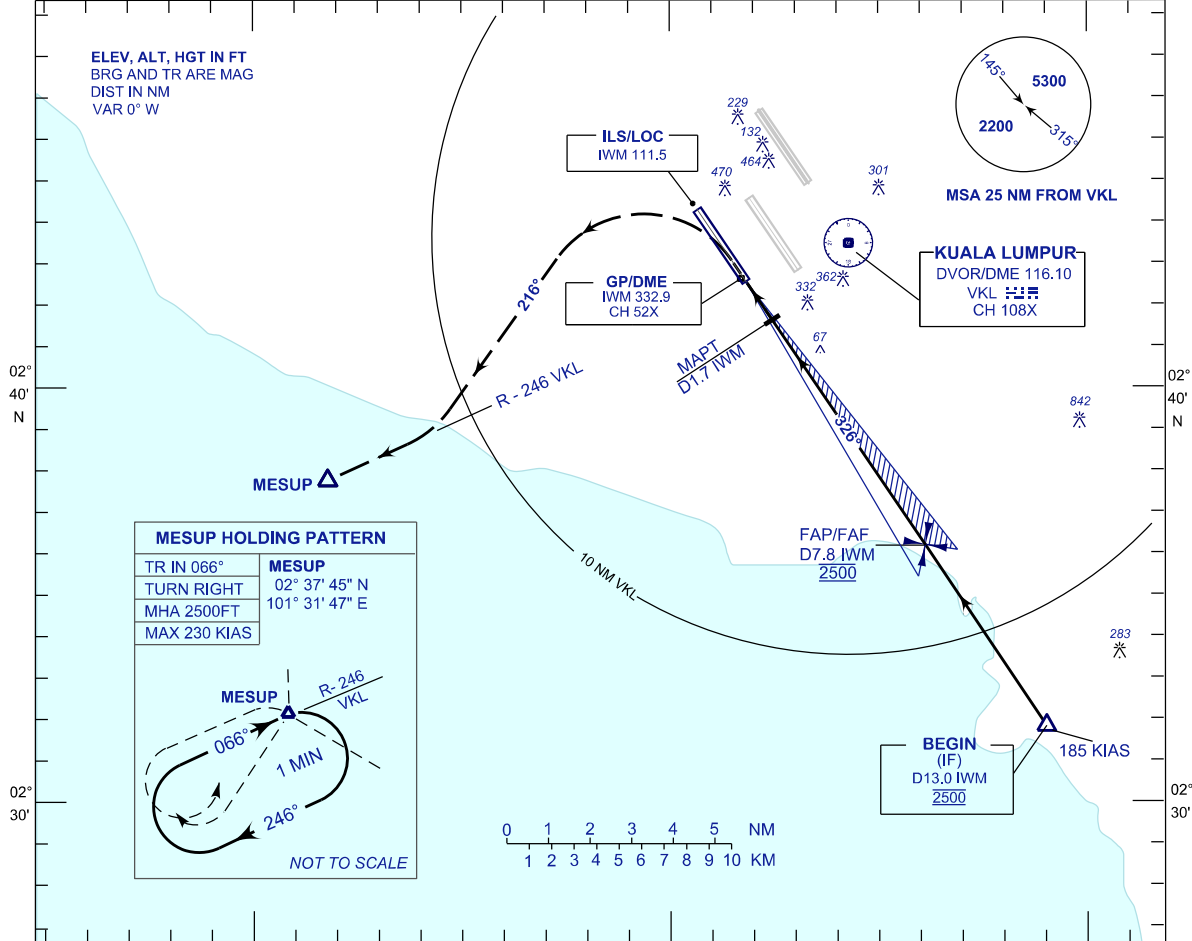
**INSTRUMENT
APPROACH
CHART - ICAO**

AERODROME ELEV 69 FT
HEIGHT RELATED TO
THR RWY 33 - ELEV 28 FT

APP 125.85 119.45 125.10	TWR 119.80	SMC 118.05	ATIS 128.05
-----------------------------------	---------------	---------------	----------------

**SEPANG/KL INTERNATIONAL
AIRPORT (WMKK)**

101° 30' 101° 40' E ILS OR LOC RWY33



MESUP HOLDING PATTERN

TR IN 066°	MESUP
TURN RIGHT	02° 37' 45" N
MHA 2500FT	101° 31' 47" E
MAX 230 KIAS	

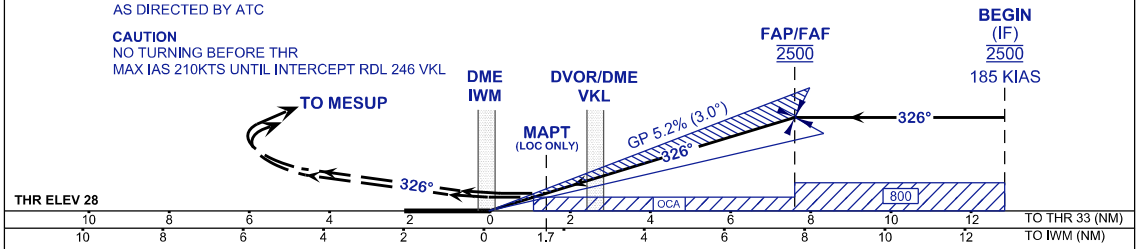
NOT TO SCALE

USE QNH
ILS RDH 52 FT

MISSED APPROACH
AT MAPT, CLIMB TO 2500FT ON TR 326°, TURN LEFT ON TR 216°
TO INTERCEPT RDL 246 VKL TO MESUP AND HOLD OR
AS DIRECTED BY ATC

CAUTION
NO TURNING BEFORE THR
MAX IAS 210KTS UNTIL INTERCEPT RDL 246 VKL

TRANSITION LEVEL FL130
TRANSITION ALT 11 000



OCA (OCH)	A	B	C	D
ILS/DME CAT I	424 (396)			
LOC/DME (GP INOP)	500 (472)			

GROUND SPEED (GS)	KT	80	100	120	140	160	180
FAP - RWY33 (7.6 NM)	MIN:SEC	5:43	4:34	3:49	3:16	2:52	2:33
RATE OF DESCEND (318.4 FT/NM)	FT/MIN	420	530	630	740	840	950

DIST IWM DME	NM	7.8	6.8	5.8	4.8	3.8	2.8	1.8	0.8
DIST THR/RWY33	NM	7.6	6.6	5.6	4.6	3.6	2.6	1.6	0.6
ALTITUDE	FT	2500	2180	1862	1543	1225	907	588	270