

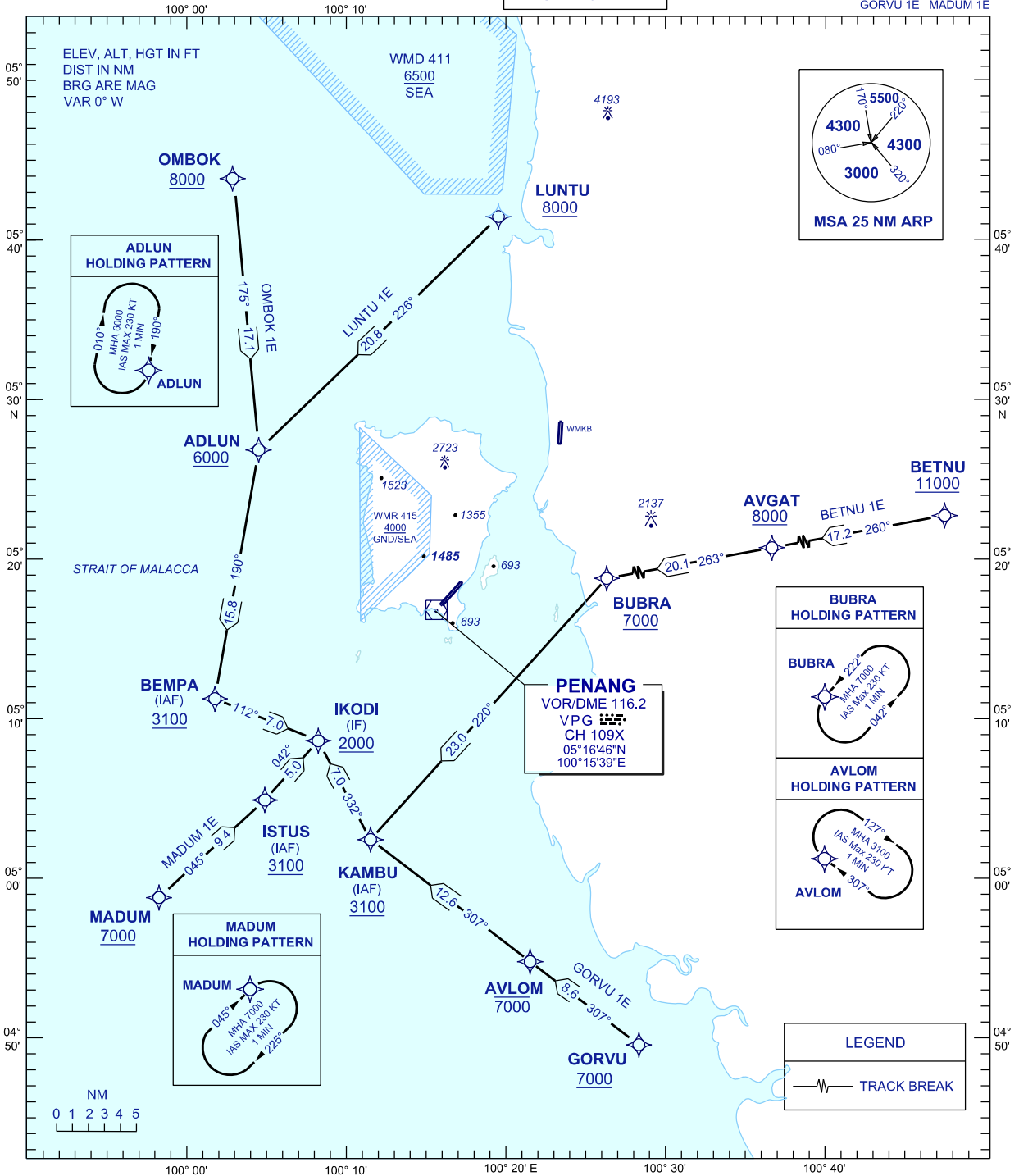
**STANDARD ARRIVAL CHART  
INSTRUMENT (STAR) - ICAO**

TRANSITION ALTITUDE  
11000 FT

APP 125.925  
TWR 121.1  
SMC 121.6, 121.9  
ATIS 126.4

**PENANG/PENANG  
INTERNATIONAL AIRPORT (WMKP)  
RNAV (GNSS) RWY 04**

OMBOK 1E LUNTU 1E BETNU 1E  
GORVU 1E MADUM 1E



CHANGES : CHANGE APP FREQUENCY VALUE.