

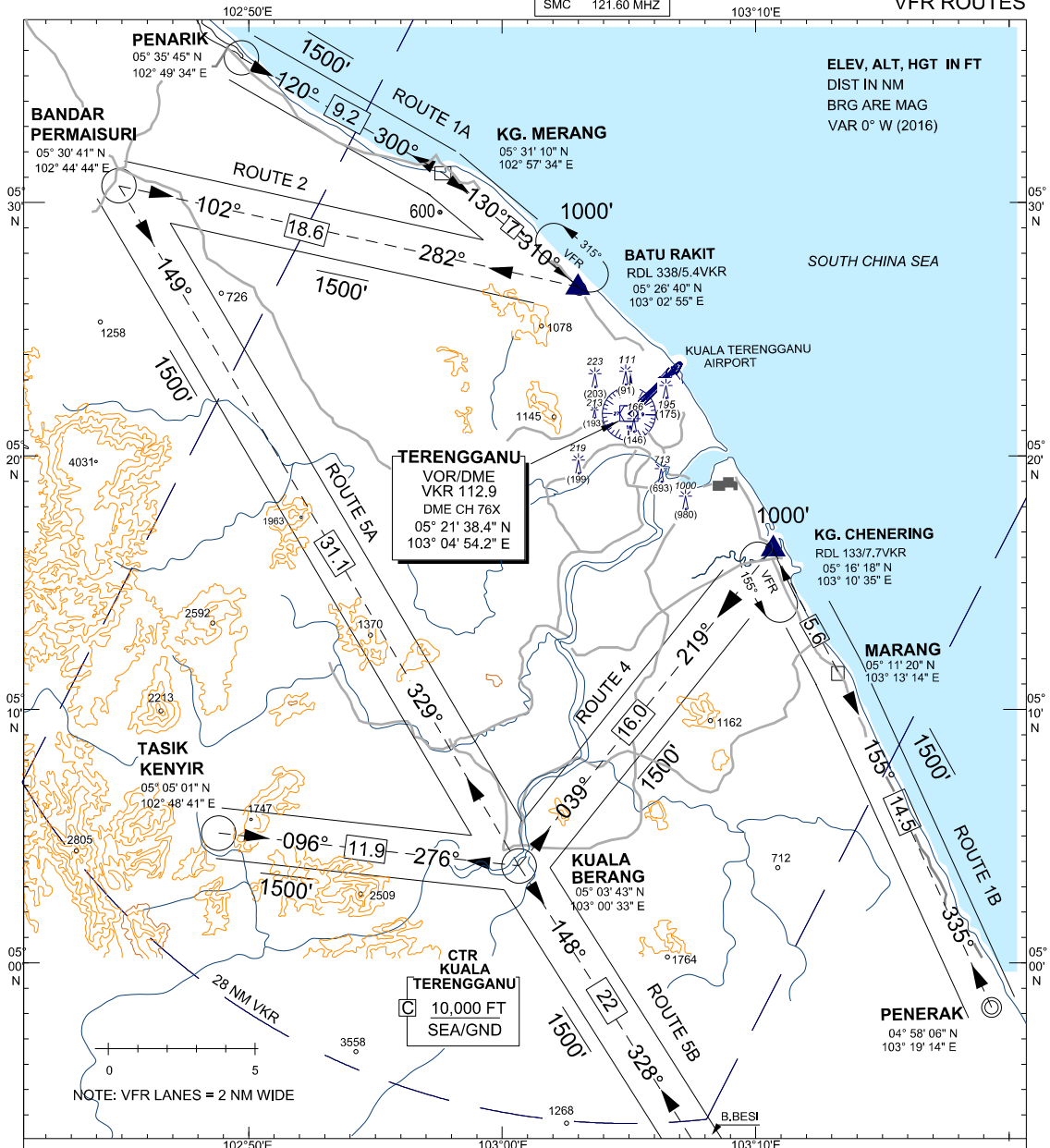
VISUAL CHART- ICAO

AERODROME ELEV 20 FT
HEIGHTS RELATED
TO AD ELEV

APP	123.6 MHZ
	235.32 MHZ
	121.5 MHZ
ATIS	126.65 MHZ
TWR	119.05 MHZ
SMC	121.60 MHZ

KUALA TERENGGANU / SULTAN MAHMUD

VFR ROUTES



ROUTE 1A : FROM PENARIK-ALT 1500 FT - KG MERANG - ALT 1000 FT
TO BATU RAKIT HOLD

ROUTE 1B : FROM PENERAK ALT 1500 FT - MARANG ALT 1000 FT
TO KG. CHENERING HOLD

ROUTE 2 : FROM BANDAR PERMAISURI ALT 1500 FT
TO BATU RAKIT HOLD

ROUTE 3 : FROM TASIK KENYIR ALT 1500 FT- KUALA BERANG

ROUTE 4 : FROM KUALA BERANG - ALT 1500 FT
TO KG. CHENERING HOLD

ROUTE 5A : FROM BANDAR PERMASURI - ALT 1500 FT- KUALA BERANG

ROUTE 5B : FROM BT. BESI ALT 1500 FT- KUALA BERANG

NOTE : THE HOLDING PATTERNS DEPICTED ARE ONLY RECOMMENDATIONS. PILOTS SHALL TAKE INTO
CONSIDERATION VFR REQUIREMENTS WHEN HOLDING.

CHANGES : AMEND CTR UPPER LIMIT TO READ AS 10,000 FT
REMOVE LOCATOR FROM THE CHART