

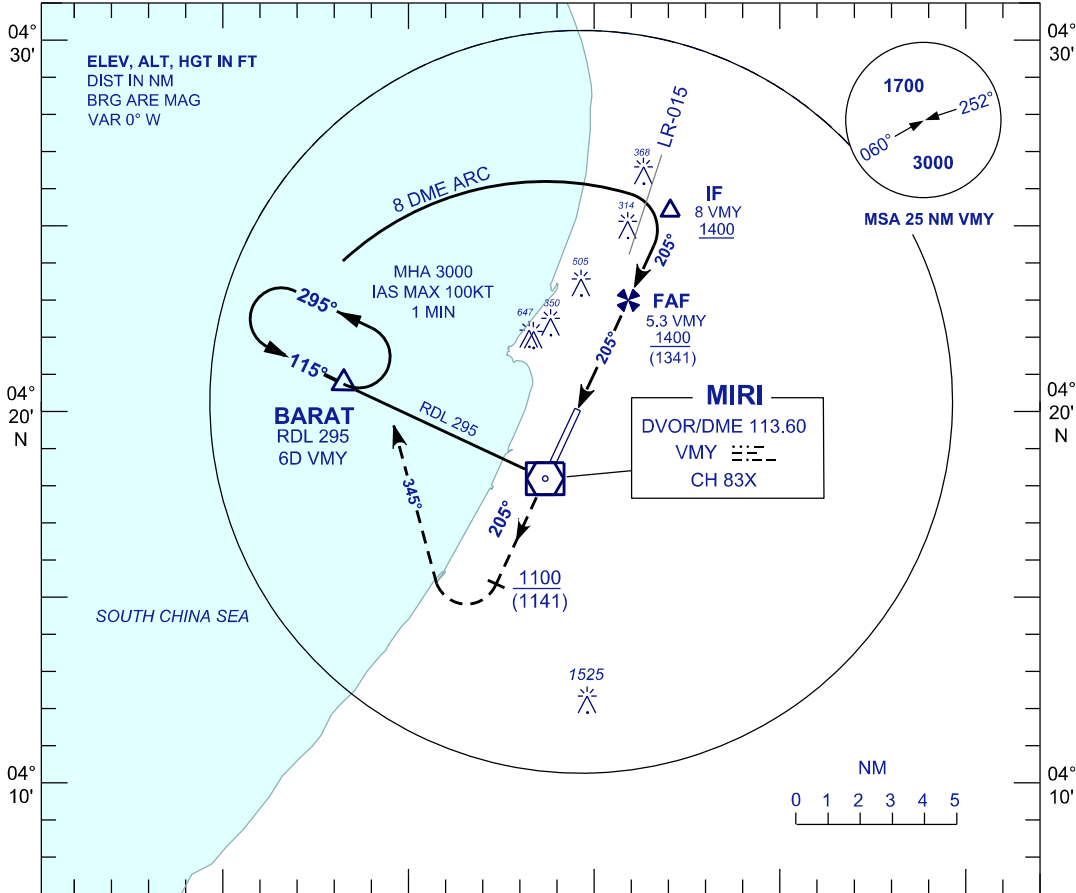
**INSTRUMENT
APPROACH
CHART - ICAO**

AERODROME ELEV 59 FT
HEIGHTS RELATED TO
THR RWY 20 - ELEV 59 FT

APP 129.9(P)
122.7(S)
TWR 123.3
SMC 121.9
CATIS 127.0

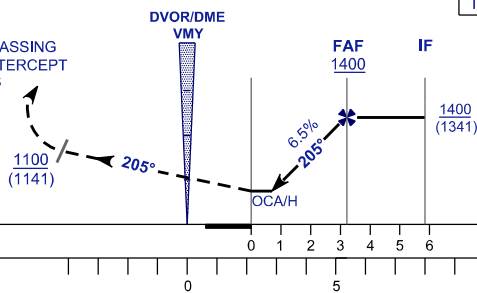
MIRI/MIRI(WBGR)
RWY 20
VOR

CAT H (HELICOPTER)



MISSED APPROACH

CLIMB ON HDG 205° TO 3000FT, ON PASSING 1100 FT TURN RIGHT HDG 345° TO INTERCEPT RDL 295 VMY TO BARAT HOLD OR AS DIRECTED BY ATC



TRANSITION LEVEL FL 130
TRANSITION ALT 11 000

THR ELEV 59

NM FROM THR RWY20

NM FROM VMY

OCA (H) FT	
ACFT CATEGORY	H (HELICOPTER)
VOR/DME (STRAIGHT-IN)	640 (581)

TIME TO THR RWY 20 FROM FAF DISTANCE 3.2 NM			
GROUND SPEED	70	90	120
MIN : SEC	2:45	2:08	1:36
6.5% DESCENT (FT/MIN)	460	590	790

CHANGES : OBSTACLE HEIGHT