

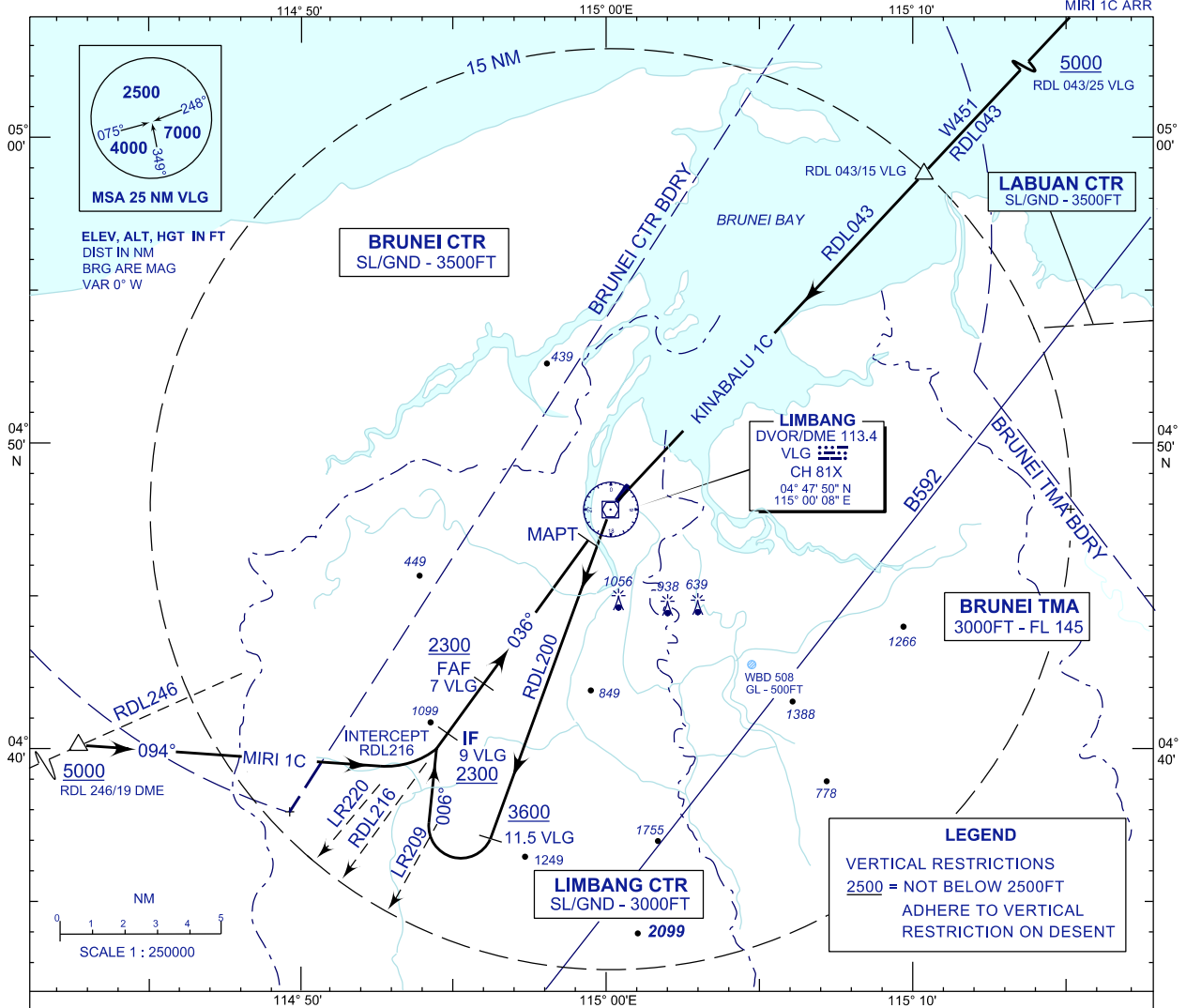
**STANDARD ARRIVAL CHART
INSTRUMENT (STAR) - ICAO**

TRANSITION ALTITUDE
11000 FT

TWR 124.30
SMC 121.95
EMERG 121.50

**LIMBANG/LIMBANG(WBGJ)
RWY 04
VOR/DME**

KINABALU 1C ARR
MIRI 1C ARR



RWY 04

KINABALU ONE CHARLIE ARRIVAL

- FROM RDL 043/15 DME VLG VOR INBOUND
- * TRACK 223° TO VLG VOR, THEN TRACK ON RDL200
 - * AT 11.5 DME, TURN RIGHT TRACK 006°
 - * TO INTERCEPT RDL 216 FOR VOR/DME APPROACH

MIRI ONE CHARLIE ARRIVAL

- FROM RDL 246/19 DME VLG VOR INBOUND
- * TURN RIGHT TRACK 094°
 - * ON CROSSING LR 220, TURN LEFT
 - * TO INTERCEPT RDL 216 FOR VOR/DME APPROACH

CHANGES : FREQ 118.500 (SRY) PERMANENTLY WITHDRAWN