

**STANDARD DEPARTURE CHART
INSTRUMENT (SID) - ICAO**

**KUCHING/KUCHING (WBGG)
RWY 25 (RNAV)**

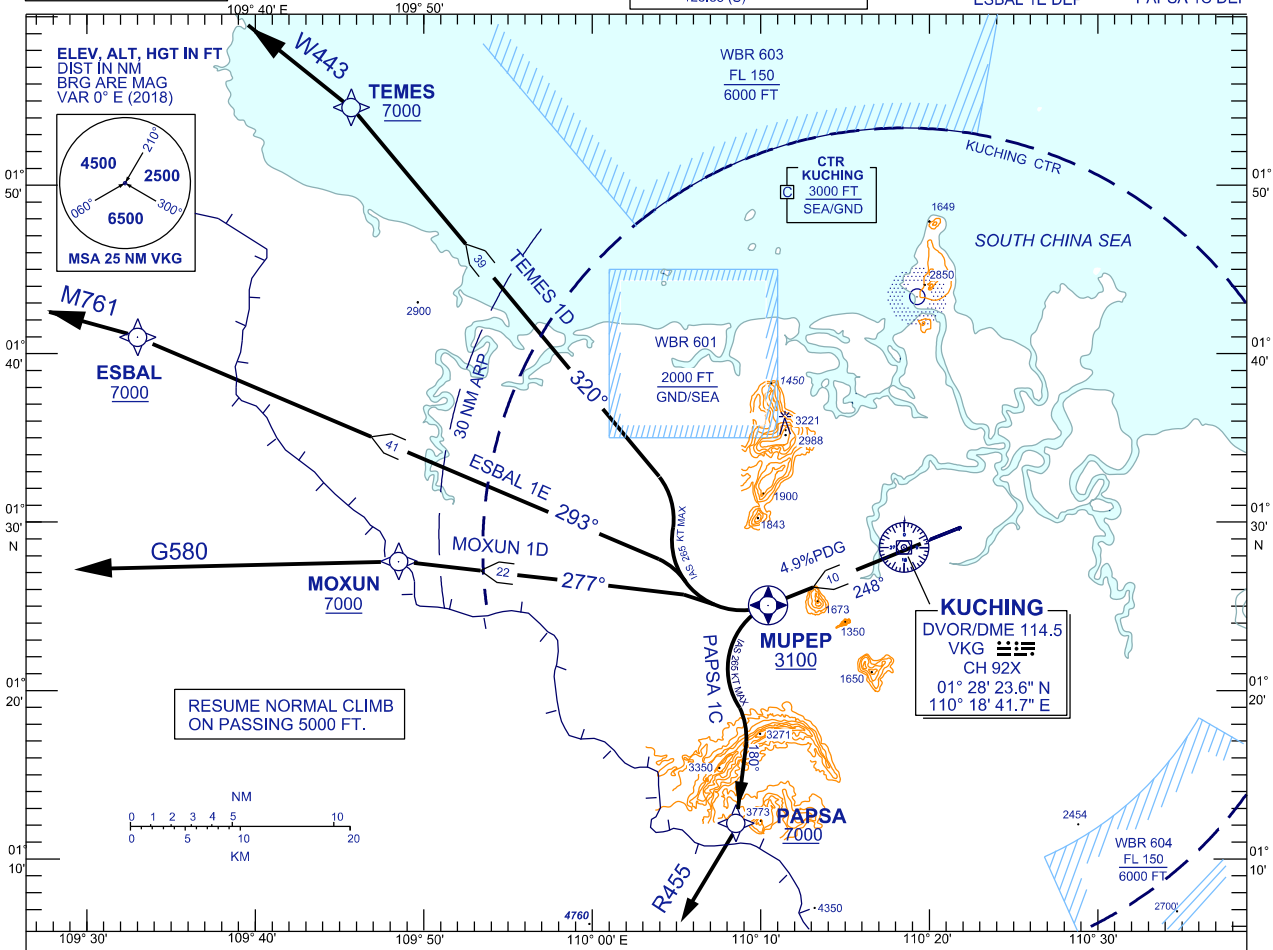
TRANSITION ALTITUDE
11,000 FT

TWR	118.1 (P)	SMC	121.9
	121.7 (S)	ATIS	128.4
APP	120.2 (P)	FIS	134.75
	123.85 (S)		
ACC	134.5 (P)		
	125.35 (S)		

TEMES 1D DEP
ESBAL 1E DEP

MOXUN 1D DEP
PAPSA 1C DEP

BANK ANGLE : 15° ACHIEVED



RWY 25 (DEPARTURES WEST)

- CLIMB AT 4.9% PDG TO FLY OVER WPT MUPEP,
- AT/ABOVE 3100 FT,

TEMES ONE DELTA DEPARTURE

ESBAL ONE ECHO DEPARTURE

MOXUN ONE DELTA DEPARTURE

PAPSA ONE CHARLIE DEPARTURE

FOR TEMES ONE DELTA

TRACK TO TEMES / W443

FOR ESBAL ONE ECHO

TRACK TO ESBAL / M761

FOR MOXUN ONE DELTA

TRACK TO MOXUN / G580

FOR PAPSA ONE CHARLIE

TRACK TO PAPSA / R455

SPEED(IAS)	120KT	140KT	160KT	180KT	200KT	230KT	265KT
4.9% ROC (FT/MIN)	599	698	799	899	997	1147	1324

VERTICAL RESTRICTIONS :

ADHERE TO VERTICAL RESTRICTIONS eg . 7000 = NOT BELOW 7000 FT ON CLIMB UNLESS SPECIFICALLY CANCELLED BY ATC

COMMUNICATION FAILURE :

- SQUAWK 7600
- IF UNDER PILOT NAVIGATION, MAINTAIN LAST ASSIGNED LEVEL FOR 3 MINUTES, IF NO ONWARD CLEARANCE IS RECEIVED, SUBSEQUENTLY CLIMB TO COMPLY WITH SID.
- IF UNDER RADAR VECTORED : MAINTAIN VECTOR FOR 2 MINUTES, IF BELOW MSA, CLIMB TO MSA, THEN TRACK TO INTERCEPT CLEARED OR PREVIOUSLY ASSIGNED SID TO DESTINATION

CHANGES : IGEVU TO ESBAL.