

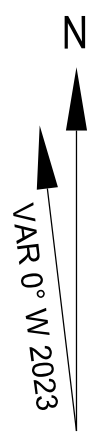
**AERODROME/HELIPORT
CHART - ICAO**

05° 22' 52" N
103° 06' 11" E
ELEV 6 M

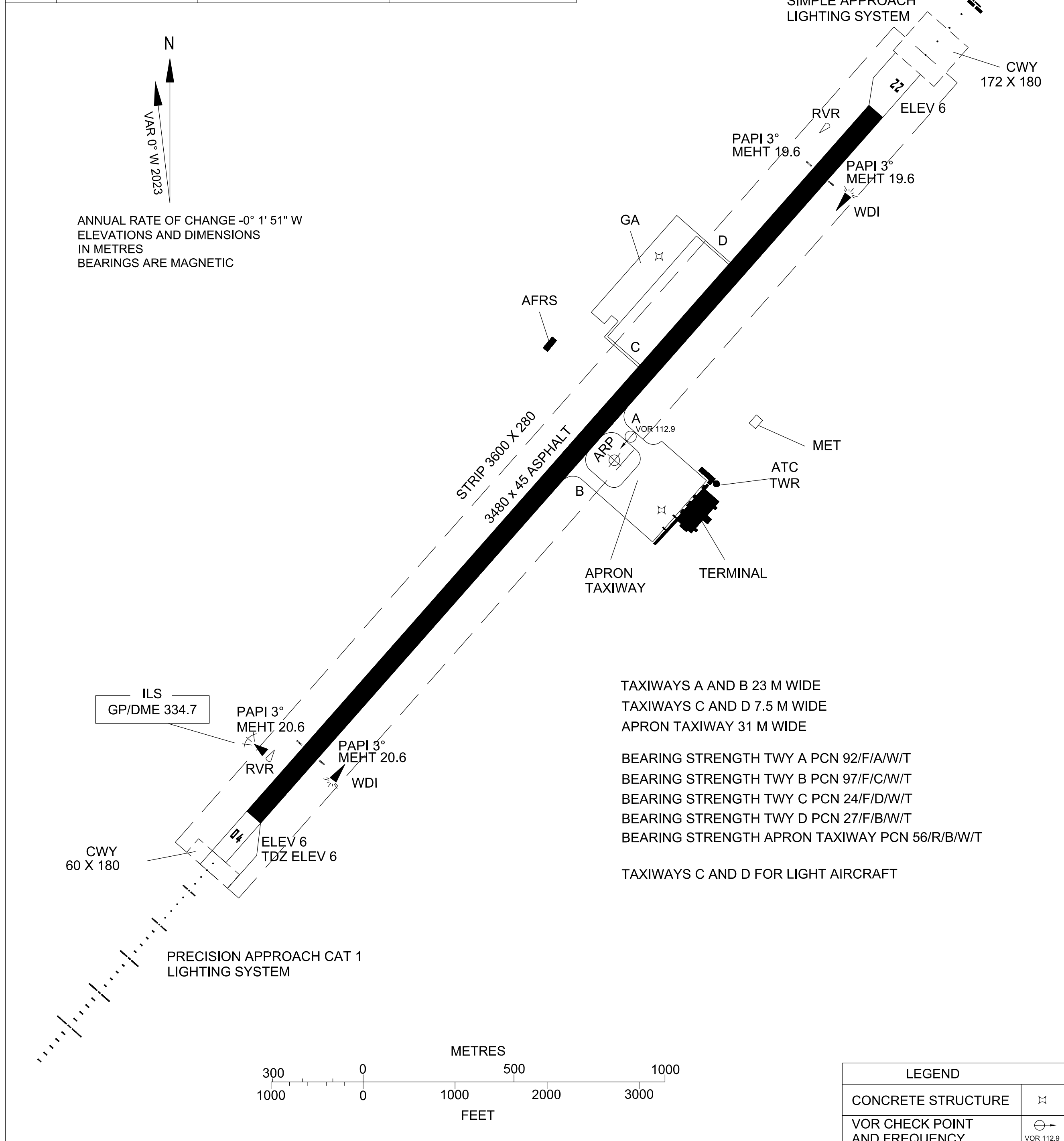
TWR 119.05
SMC 121.60
APP 123.60
235.32
121.50
ATIS 126.65

**KUALA TERENGGANU/
SULTAN MAHMUD AIRPORT**

RWY	DIRECTION	THR	BEARING STRENGTH
04	44°	05° 22' 11.16" N 103° 05' 26.45" E	PCN 81/F/B/W/T ASPHALT
22	224°	05° 23' 31.94" N 103° 06' 45.70" E	



ANNUAL RATE OF CHANGE -0° 1' 51" W
ELEVATIONS AND DIMENSIONS
IN METRES
BEARINGS ARE MAGNETIC



TAXIWAYS A AND B 23 M WIDE
TAXIWAYS C AND D 7.5 M WIDE
APRON TAXIWAY 31 M WIDE

BEARING STRENGTH TWY A PCN 92/F/A/W/T
BEARING STRENGTH TWY B PCN 97/F/C/W/T
BEARING STRENGTH TWY C PCN 24/F/D/W/T
BEARING STRENGTH TWY D PCN 27/F/B/W/T
BEARING STRENGTH APRON TAXIWAY PCN 56/R/B/W/T

TAXIWAYS C AND D FOR LIGHT AIRCRAFT

LEGEND	
CONCRETE STRUCTURE	⊠
VOR CHECK POINT AND FREQUENCY	⊕ VOR 112.9

CHANGES : INFORMATION ON ANNUAL RATE CHANGE
INFORMATION ON APRON TAXIWAY