

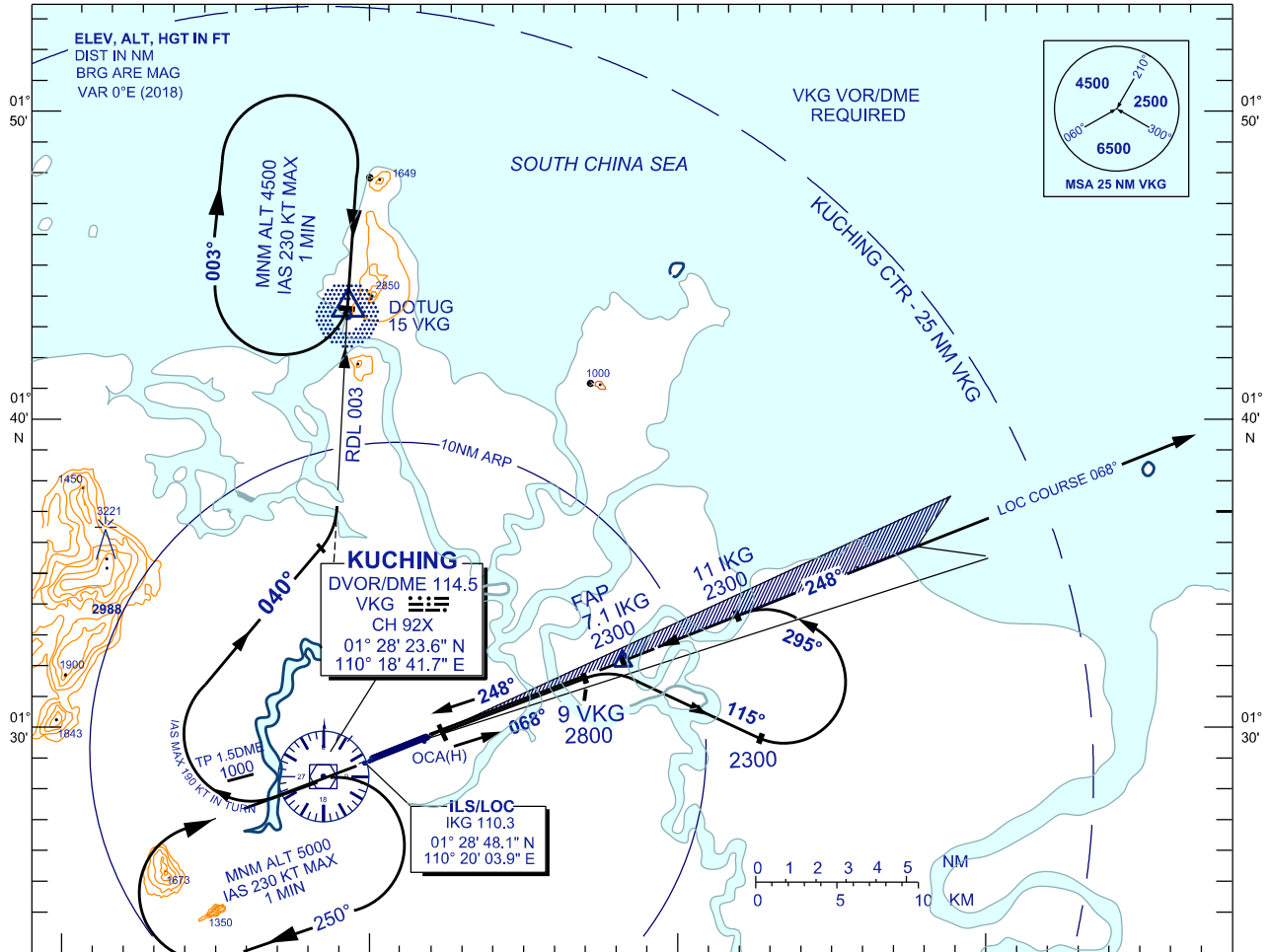
**INSTRUMENT
APPROACH
CHART - ICAO**

AERODROME ELEV 88 FT
HEIGHTS RELATED TO
THR RWY 25 - ELEV 42 FT
ILS REF DATUM 54 FT

TWR	118.1 (P)	SMC	121.9
	121.7 (S)	ATIS	128.4
APP	120.2 (P)	FIS	134.75
	123.85 (S)		
ACC	134.5 (P)		
	125.35 (S)		

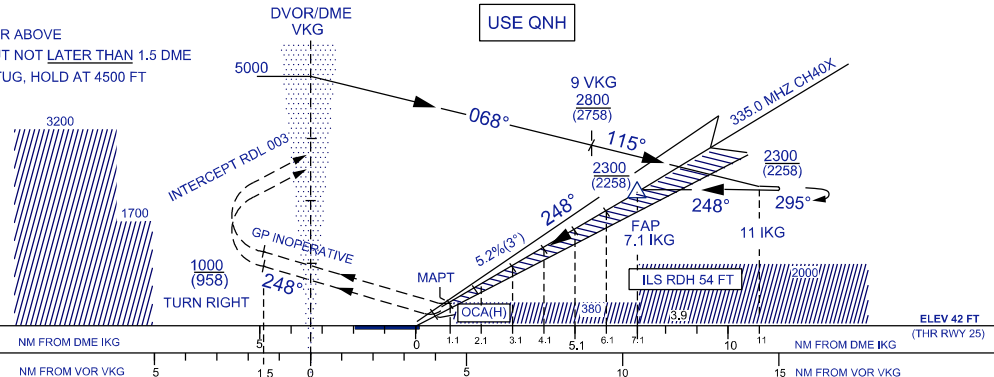
**KUCHING/KUCHING (WBGG)
RWY 25**

ILS Y/ LOC Y
(FROM OVERHEAD VKG)



DIST BY DME (NM)	7.1	6.1	5.1	4.1	3.1	2.1	1.1	TRANSITION ALT 11000
ALT 3° APCH PATH (FT)	2300 (2258)	1982 (1940)	1664 (1622)	1346 (1304)	1028 (986)	710 (668)	443 (401)	

MISSED APPROACH
CLIMB ON 248° TO 1000 FT OR ABOVE
TURN RIGHT AFTER VKG, BUT NOT LATER THAN 1.5 DME
INTERCEPT RDL 003 TO DOTUG, HOLD AT 4500 FT
OR AS DIRECTED BY ATC



		OCA (H) FT	A	B	C	D
STRAIGHT-IN APPROACH	CAT. 1		243 (201)	243 (201)	245 (203)	256 (214)
	GP INOP		443 (401) / 1.1 IKG			
CIRCLING			750 (662)	750 (662)	1200 (1112)	1200 (1112)

GROUND SPEED(KT)		70	90	120	150	180	210	
FAP - MAPT = 6.0NM	MIN : SEC	5:08	4:00	3:00	2:24	2:00	1:43	
	RATE OF DESCENT (3°)	FT./ MIN	354	455	607	759	911	1063

CHANGES : CHANGE BEARING 070° TO 068°