

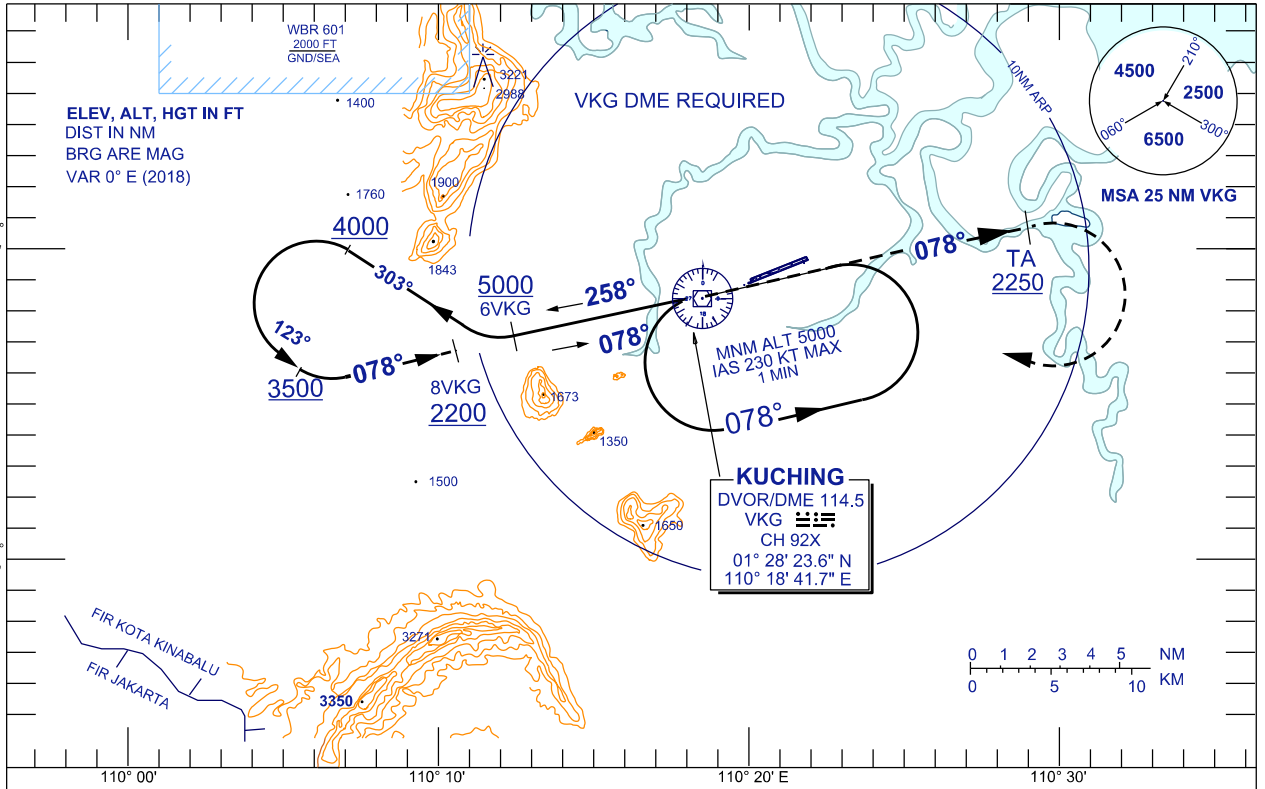
INSTRUMENT APPROACH CHART - ICAO

AERODROME ELEV 88 FT
 HEIGHTS RELATED TO
 THR RWY 07 - ELEV 88 FT

TWR	118.1 (P)	SMC	121.9
	121.7 (S)	ATIS	128.4
APP	120.2 (P)	FIS	134.75
	123.85 (S)		
ACC	134.5 (P)		
	125.35 (S)		

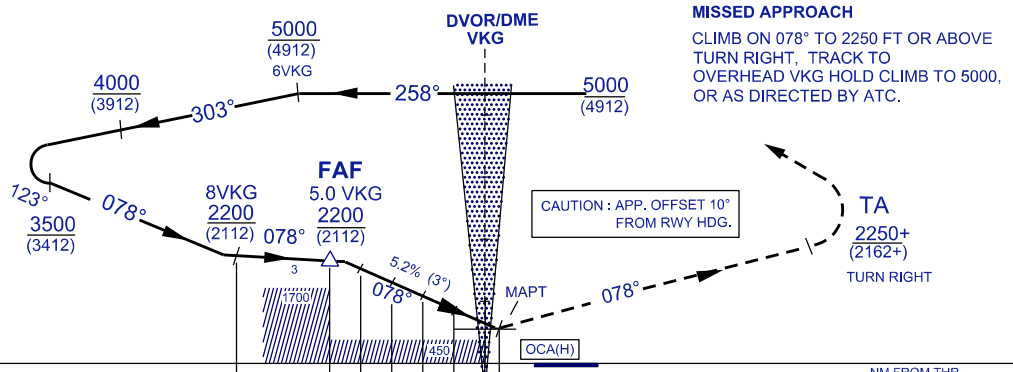
KUCHING/KUCHING (WBGG) RWY 07

VOR Y
 (FROM OVERHEAD VKG)



DISTANCE BY DME (NM)	FAF/5.0	4.0	3.0	2.0	1.0	MAPT/-0.3
ALT 3° APCH PATH (FT)	2200(2112)	1882(1794)	1564(1476)	1246(1158)	928(840)	524(436)

USE QNH TRANSITION ALT 11000



THR ELEV 88 (THR RWY 07)											NM FROM THR	
	NM FROM VOR VKG											
	12	10	8	5	4	3	2	1	0.3	1	2	3

OCA (H) FT	A	B	C	D
STRAIGHT-IN APPROACH	524 (436)			
CIRCLING	750 (662)	750 (662)	1200 (1112)	1200 (1112)

GROUND SPEED(KT)	70	90	120	150	180
FAF - MAPT = 5.3NM	5:39	4:24	2:39	2:38	2:12
RATE OF DESCENT (3°)	406	479	639	799	959

CHANGES : FAF CHANGE TO 5.0 VKG