

STANDARD ARRIVAL CHART (STAR) - ICAO

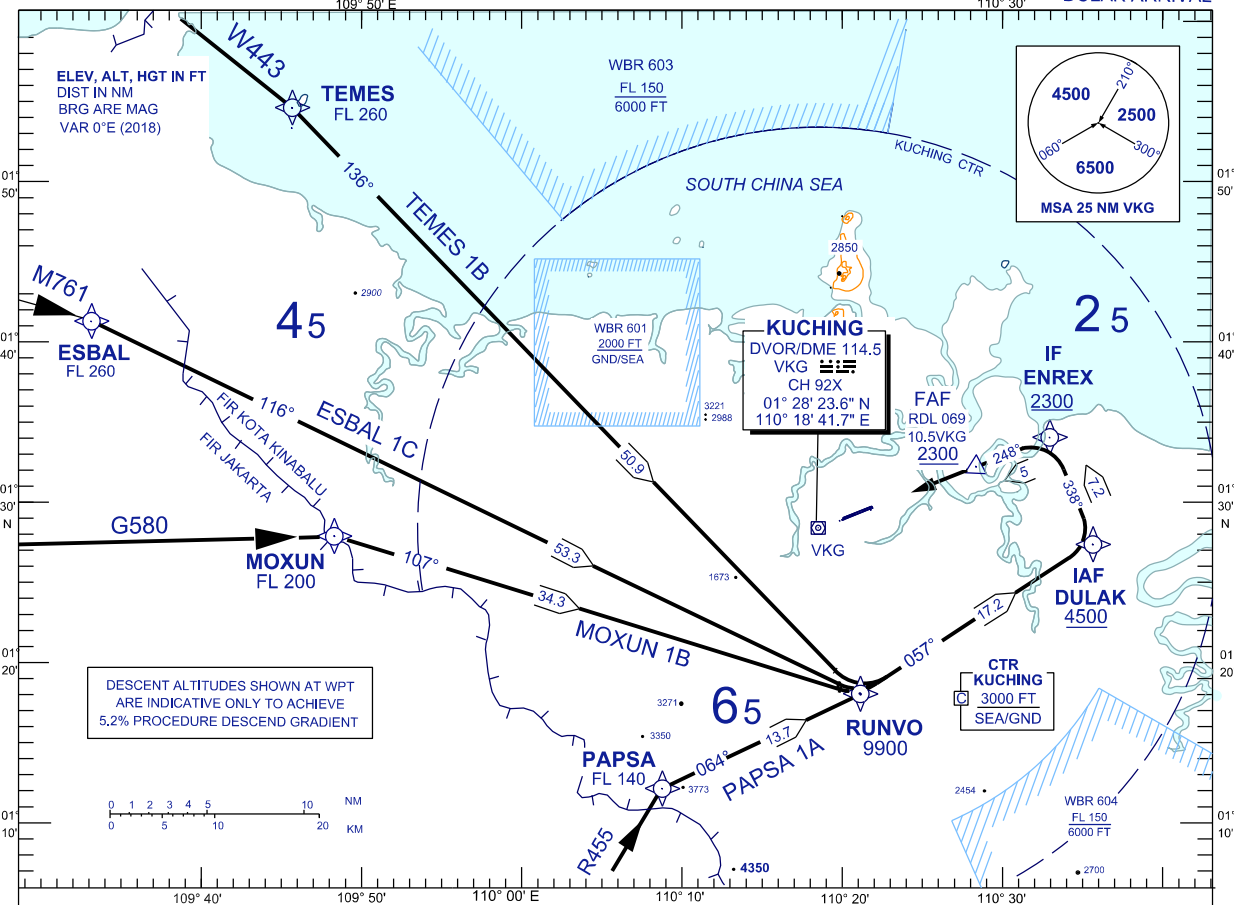
KUCHING/KUCHING (WBGG)
RWY 25 (RNAV)

TRANSITION ALTITUDE
 11,000 FT

TWR 118.1 (P) SMC 121.9
 121.7 (S) ATIS 128.4
 APP 120.2 (P) FIS 134.75
 123.85 (S)
 ACC 134.5 (P)
 125.35 (S)

BANK ANGLE : 25° OR 37° SEC

DULAK ARRIVAL



DESCENT ALTITUDES SHOWN AT WPT
 ARE INDICATIVE ONLY TO ACHIEVE
 5.2% PROCEDURE DESCEND GRADIENT

TRANSITIONS

- TEMES ONE BRAVO :** FROM TEMES TRACK TO RUNVO
 THEN TRACK TO DULAK AND TO ENREX
- ESBAL ONE CHARLIE :** FROM ESBAL TRACK TO RUNVO,
 THEN TRACK TO DULAK AND TO ENREX
- MOXUN ONE BRAVO :** FROM MOXUN TRACK TO RUNVO,
 THEN TRACK TO DULAK AND TO ENREX
- PAPSA ONE ALPHA :** FROM PAPSA TRACK TO RUNVO,
 THEN TRACK TO DULAK AND TO ENREX

DULAK ARRIVAL :

- FROM ENREX INTERCEPT LLZ RWY 25 OR INTERCEPT RDL 070 VKG

VERTICAL RESTRICTIONS :

ADHERE TO VERTICAL RESTRICTIONS eg . 4500 = NOT BELOW 4500 FT ON DESCENT UNLESS SPECIFICALLY CANCELLED BY ATC

COMMUNICATION FAILURE :

- * SQUAWK 7600
- * IF UNDER PILOT NAVIGATION, CONTINUE ON STAR AND LAND
- * IF UNDER RADAR VECTORED, MAINTAIN VECTOR FOR 1 MINUTE,
 IF BELOW MSA, CLIMB TO MSA, THEN TRACK TO INTERCEPT CLEARED OR PREVIOUSLY ASSIGNED STAR AND LAND.

CHANGES : REMOVE TAS < 250 KT FROM FREQUENCY BOX.