

**STANDARD ARRIVAL CHART  
INSTRUMENT (STAR) - ICAO**

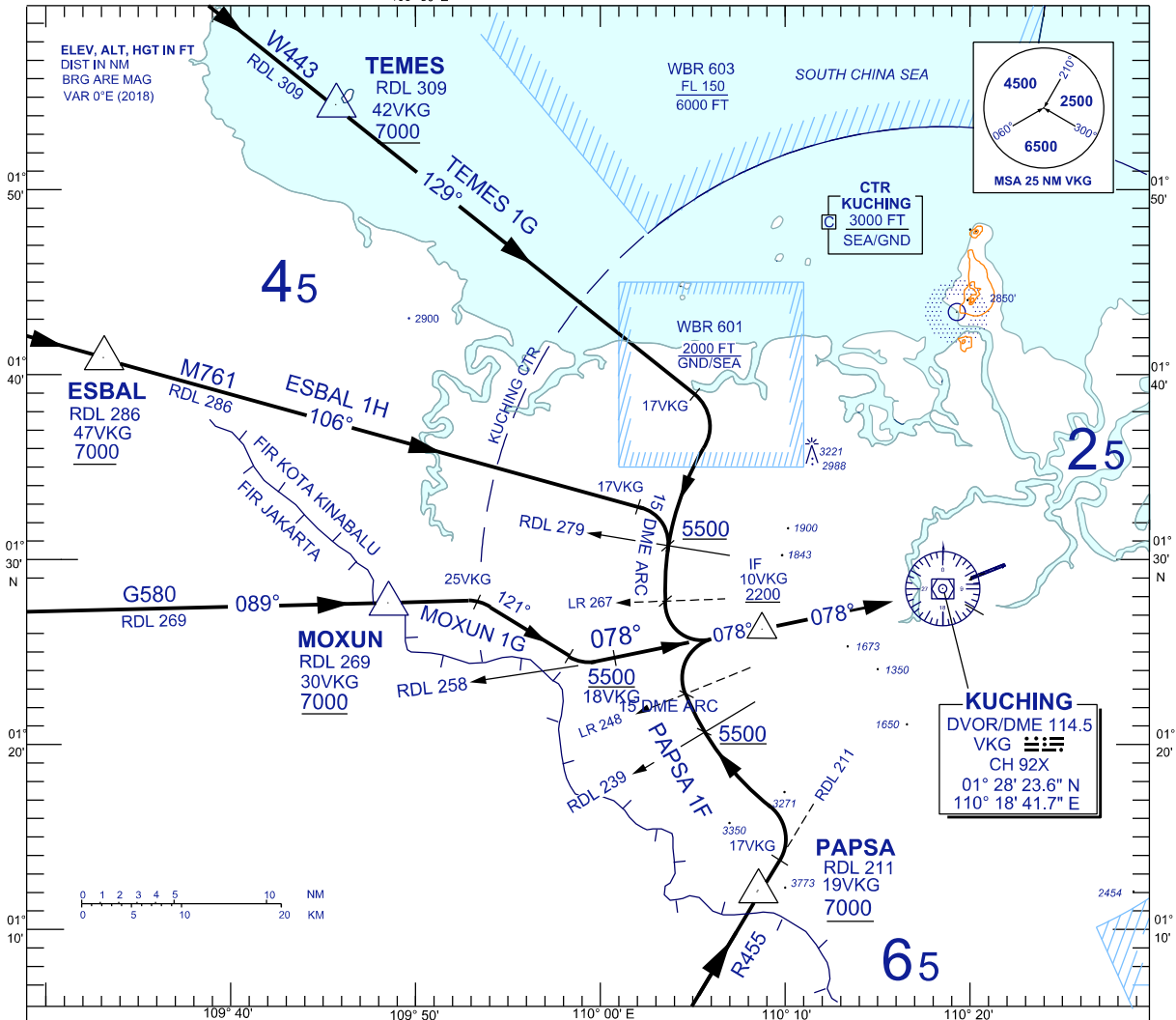
**KUCHING / KUCHING (WBGG)  
RWY 07**

TRANSITION ALTITUDE  
11,000 FT

TWR	118.1 (P)	SMC	121.9
	121.7 (S)	ATIS	128.4
APP	120.2 (P)	FIS	134.75
	123.85 (S)		
ACC	134.5 (P)		
	125.35 (S)		

BANK ANGLE : 25° OR 31°/SEC

TEMES 1G ARR    MOXUN 1G ARR  
ESBAL 1H ARR    PAPSA 1F ARR



**ARRIVALS**

**TEMES ONE GOLF ARRIVAL**

- FROM TEMES TRACK 129° VKG VOR INBOUND.
- AT 17 DME VKG, TURN RIGHT TRACK ON 15 DME ARC.
- ON CROSSING LR 267, TURN LEFT
- INTERCEPT RDL 258 VKG FOR VOR z RWY 07

**ESBAL ONE HOTEL ARRIVAL**

- FROM ESBAL TRACK 106° VKG VOR INBOUND.
- AT 17 DME VKG, TURN RIGHT TRACK ON 15 DME ARC.
- ON CROSSING LR 267, TURN LEFT
- INTERCEPT RDL 258 VKG FOR VOR z RWY 07

**MOXUN ONE GOLF ARRIVAL**

- FROM MOXUN TRACK 089° VKG VOR INBOUND.
- AT 25 DME VKG, TURN RIGHT TRACK 121°,
- INTERCEPT RDL 258 VKG FOR VOR z RWY 07

**PAPSA ONE FOXTROT ARRIVAL**

- FROM PAPSA TRACK 031° VKG VOR INBOUND.
- AT 17 DME VKG, TURN LEFT TRACK ON 15 DME ARC.
- ON CROSSING LR 248, TURN RIGHT
- INTERCEPT RDL 258 VKG FOR VOR z RWY 07

**VERTICAL RESTRICTIONS :**

ADHERE TO VERTICAL RESTRICTIONS eg. 5500 = NOT BELOW 5500 FT ON DESCENT UNLESS SPECIFICALLY CANCELLED BY ATC.

**COMMUNICATIONS FAILURE :**

- \* SQUAWK 7600
- \* IF UNDER PILOT NAVIGATION, CONTINUE ON STAR AND LAND
- \* IF UNDER RADAR VECTORED, MAINTAIN VECTOR FOR 1 MINUTE, IF BELOW MSA, CLIMB TO MSA, THEN TRACK TO INTERCEPT CLEARED OR PREVIOUSLY ASSIGNED STAR AND LAND