

STANDARD ARRIVAL CHART INSTRUMENT (STAR) - ICAO

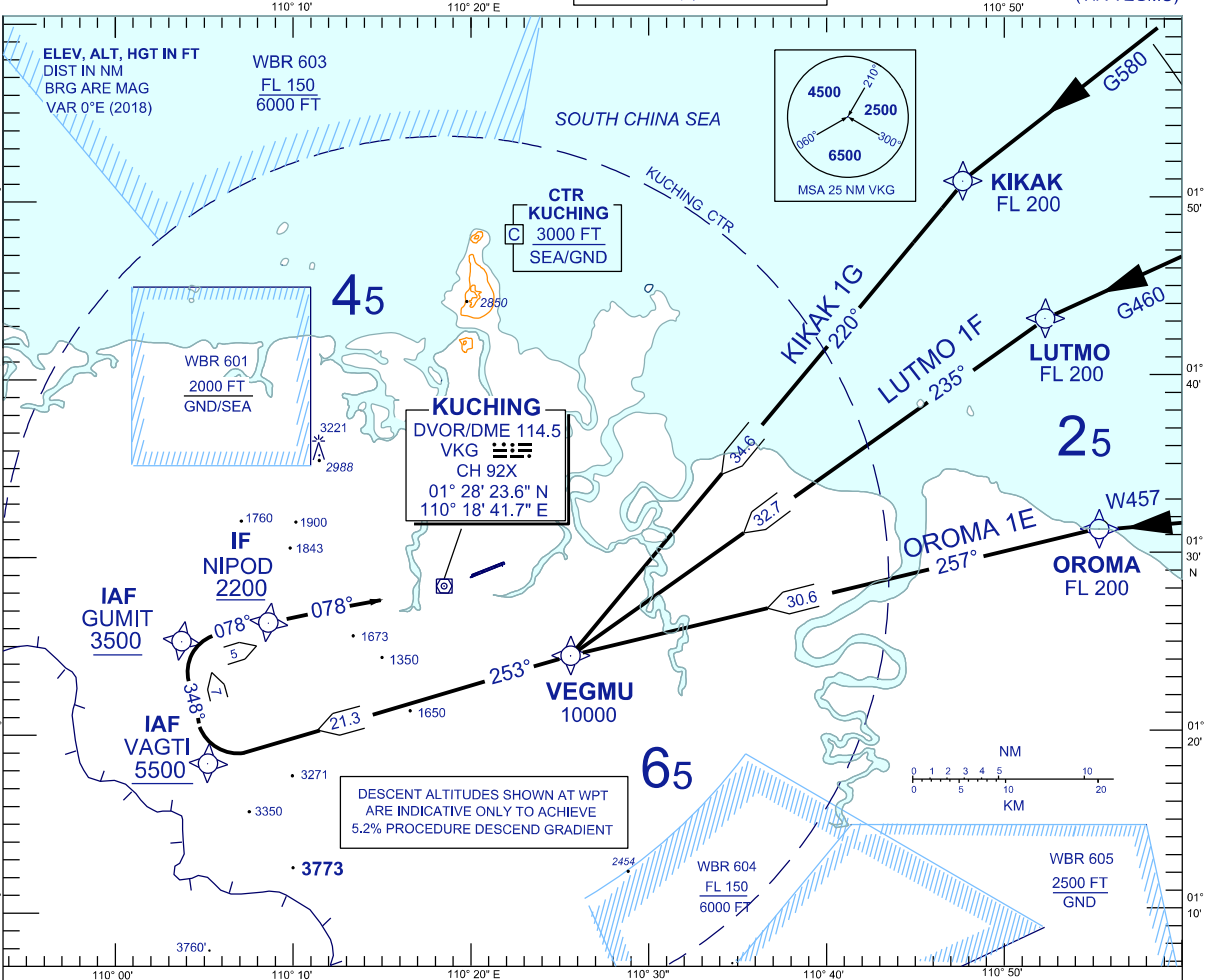
KUCHING/KUCHING (WBGG)
RWY 07 (RNAV)

TRANSITION ALTITUDE
11,000 FT

TWR	118.1 (P)	SMC	121.9
	121.7 (S)	ATIS	128.4
APP	120.2 (P)	FIS	134.75
	123.85 (S)		
ACC	134.5 (P)		
	125.35 (S)		

GUMIT ARRIVAL
(VIA VEGMU)

BANK ANGLE : 25° OR 3°/SEC



TRANSITIONS

- KIKAK ONE GOLF :** FROM KIKAK TRACK TO VEGMU THEN TRACK TO VAGTI AND TO GUMIT
- LUTMO ONE FOXTROT :** FROM LUTMO TRACK TO VEGMU THEN TRACK TO VAGTI AND TO GUMIT
- OROMA ONE ECHO :** FROM OROMA TRACK TO VEGMU THEN TRACK TO VAGTI AND TO GUMIT
- GUMIT ARRIVAL :** FROM GUMIT TRACK TO NIPOD TO INTERCEPT RDL 258 VKG FOR VOR z RWY 07

VERTICAL RESTRICTIONS :

ADHERE TO VERTICAL RESTRICTIONS eg . 2300 = NOT BELOW 2300 FT ON DESCENT UNLESS SPECIFICALLY CANCELLED BY ATC

COMMUNICATIONS FAILURE :

- * SQUAWK 7600
- * IF UNDER PILOT NAVIGATION, CONTINUE ON STAR AND LAND
- * IF UNDER RADAR VECTORED, MAINTAIN VECTOR FOR 1 MINUTE, IF BELOW MSA, CLIMB TO MSA, THEN TRACK TO INTERCEPT CLEARED OR PREVIOUSLY ASSIGNED STAR AND LAND

CHANGES : REMOVE TAS < 250 KT FROM FREQUENCY BOX.