

STANDARD DEPARTURE CHART INSTRUMENT (SID) - ICAO

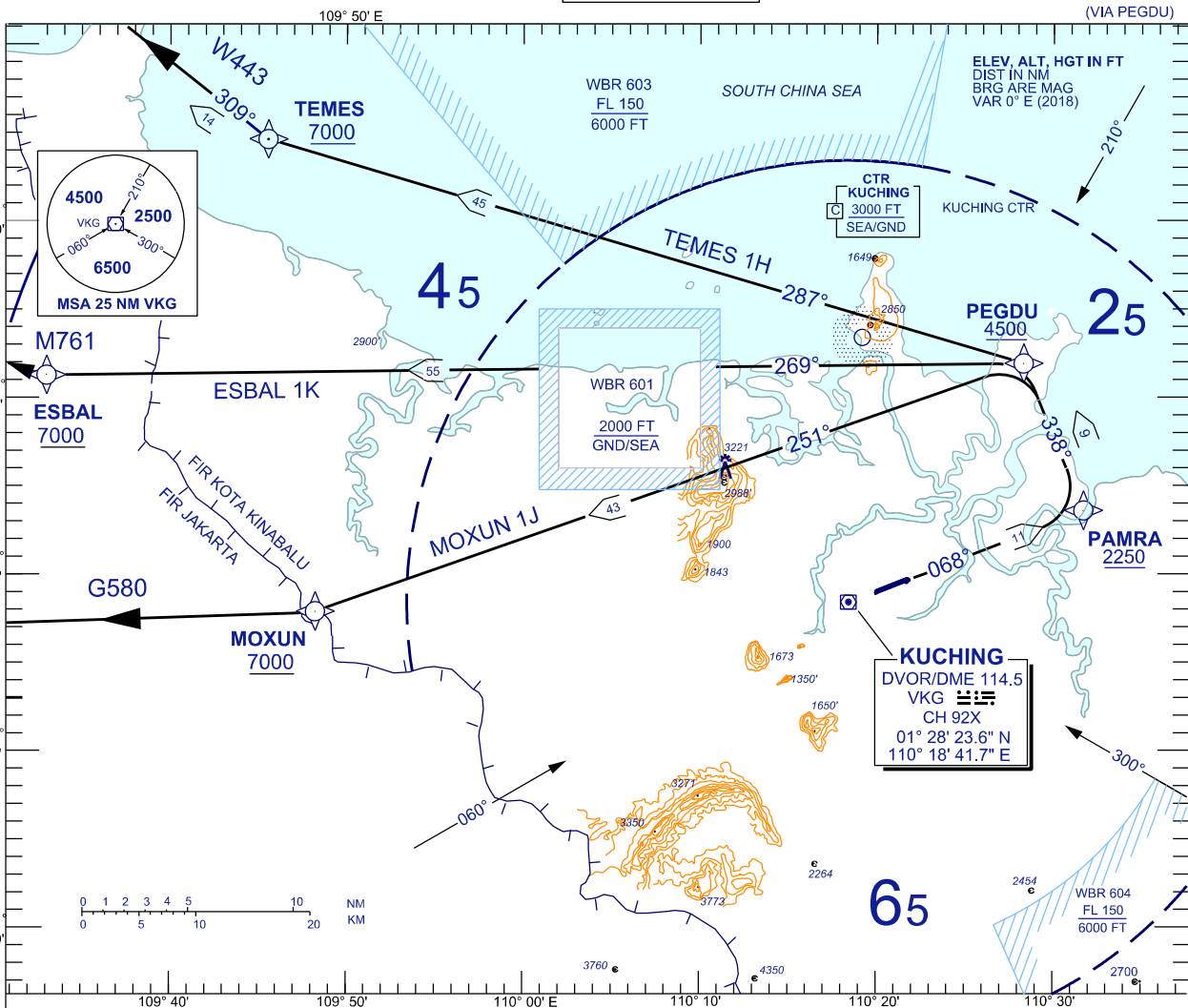
BANK ANGLE : 15° ACHIEVED

TRANSITION ALTITUDE
11,000 FT

TWR	118.1 (P)	SMC	121.9
	121.7 (S)	ATIS	128.4
APP	120.2 (P)	FIS	134.75
	123.85 (S)		
ACC	134.5 (P)		
	125.35 (S)		

KUCHING/KUCHING (WBGG) RWY 07 (RNAV)

ESBAL 1K DEP MOXUN 1J DEP
TEMES 1H DEP
(VIA PEGDU)



RWY 07 (LEFT TURN)

CLIMB ON TRACK TO PAMRA, THEN TURN LEFT
FOR TEMES ONE HOTEL
 TRACK TO PEGDU, THEN TRACK TO TEMES
FOR ESBAL ONE KILO
 TRACK TO PEGDU, THEN TRACK TO ESBAL
FOR MOXUN ONE JULIET
 TRACK TO PEGDU, THEN TRACK TO MOXUN

VERTICAL RESTRICTIONS :

ADHERE TO VERTICAL RESTRICTIONS eg . 7000 = NOT BELOW 7000 FT ON CLIMB UNLESS SPECIFICALLY CANCELLED BY ATC

COMMUNICATION FAILURE :

- SQUAWK 7600
- IF UNDER PILOT NAVIGATION, MAINTAIN LAST ASSIGNED LEVEL FOR 3 MINUTES, IF NO ONWARD CLEARANCE IS RECEIVED, SUBSEQUENTLY CLIMB TO COMPLY WITH SID.
- IF UNDER RADAR VECTORED : MAINTAIN VECTOR FOR 2 MINUTES, IF BELOW MSA, CLIMB TO MSA, THEN TRACK TO INTERCEPT CLEARED OR PREVIOUSLY ASSIGNED SID TO DESTINATION