

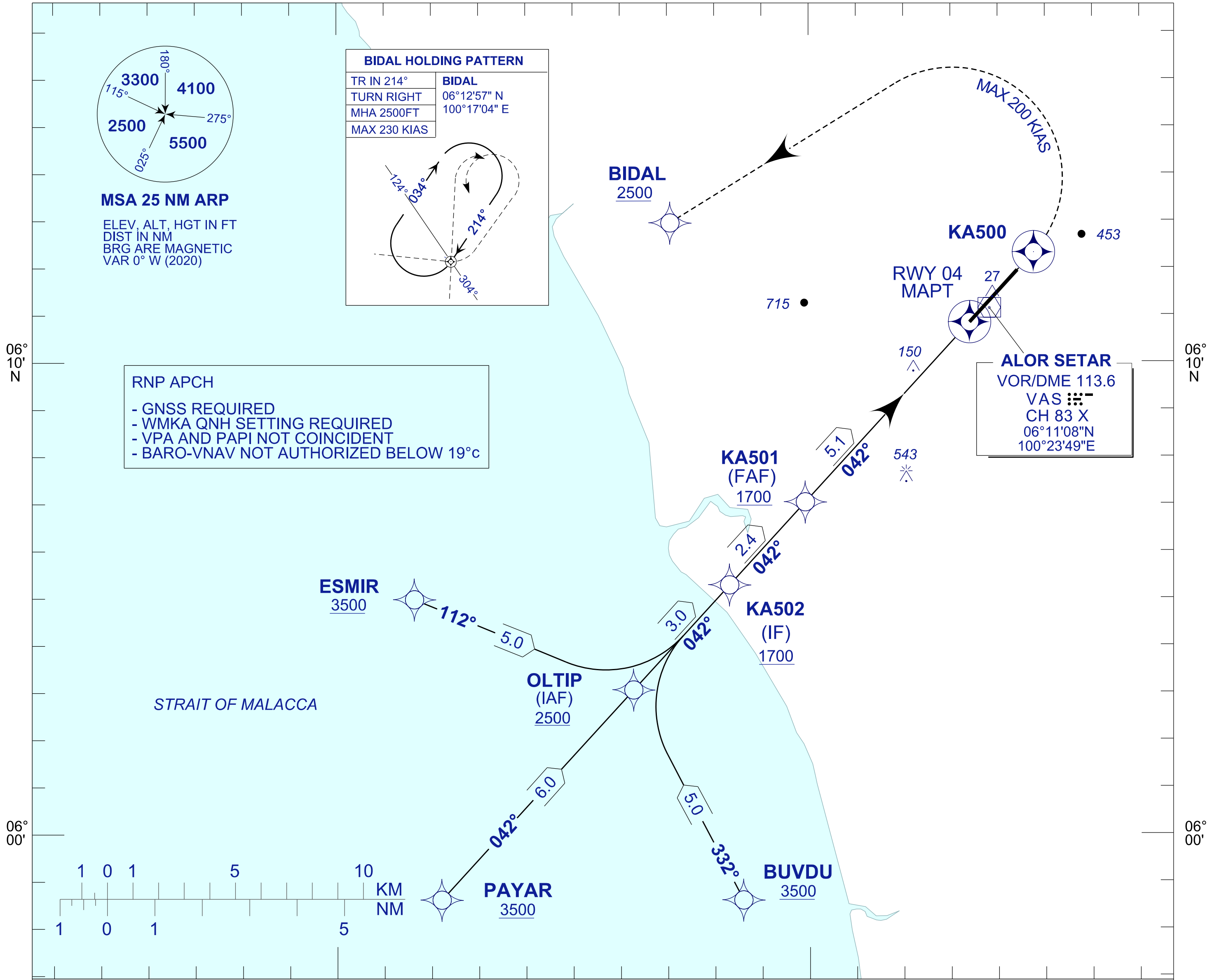
**INSTRUMENT
APPROACH
CHART - ICAO**

AERODROME ELEV 14 FT
HEIGHT RELATED TO
THR RWY 04 - ELEV 12 FT

TWR/APP 122.3
121.5
258.2
SMC 121.6
ATIS 128.65

**ALOR SETAR/
SULTAN ABDUL HALIM (WMKA)**

RNP Y RWY 04



MISSED APPROACH

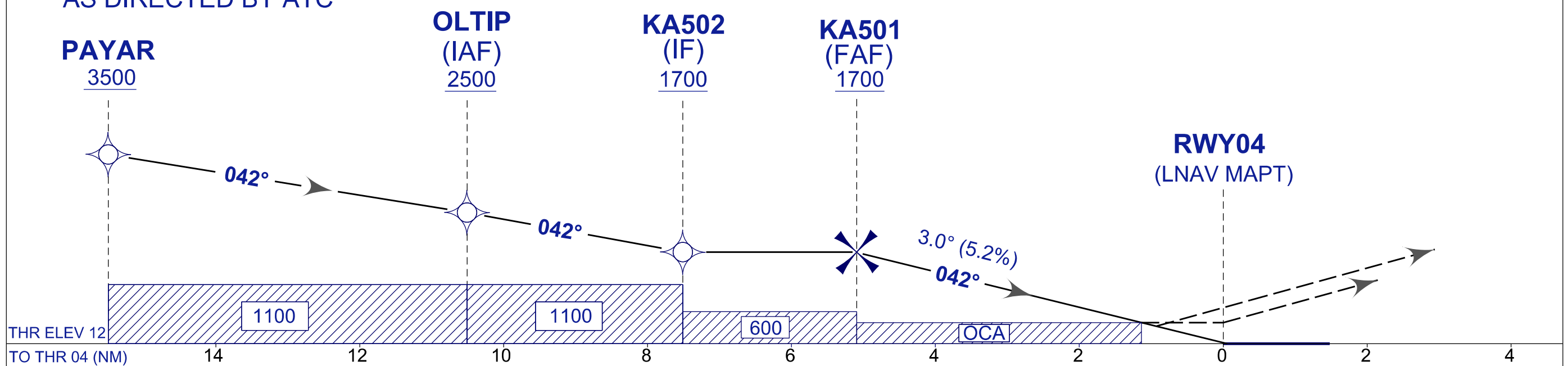
CLIMB ON TR 042° TO 2500 FT. ON PASSING KA500
TURN LEFT DIRECT TO BIDAL AND HOLD OR
AS DIRECTED BY ATC

CAUTION

MISSED APPROACH TURNED SPEED
MAX 200 KIAS

TRANSITION ALT 11000

RDH 50 FT



OCA (OCH)	A	B	C	D
LNAV	400 (388)			
LNAV / VNAV	300 (288)	309 (297)	323 (311)	337 (325)

DIST THR/RWY 04	NM	5.1	5.0	4.0	3.0	2.0	1.0
ALTITUDE	FT	1700	1655	1251	954	657	360

GS	KT	80	100	120	140	160	180
FAF - RWY04 (5.1NM)	MIN:SEC	3:52	3:06	2:35	2:13	1:56	1:43
RATE OF DESCEND (318.4 FT/NM)	FT/MIN	420	530	630	740	840	950

CHANGES : AERODROME ELEVATION