

STANDARD DEPARTURE CHART INSTRUMENT (SID) - ICAO

SEPANG/KL INTERNATIONAL AIRPORT (WMKK) RNP 1 (GNSS) RWY 32R

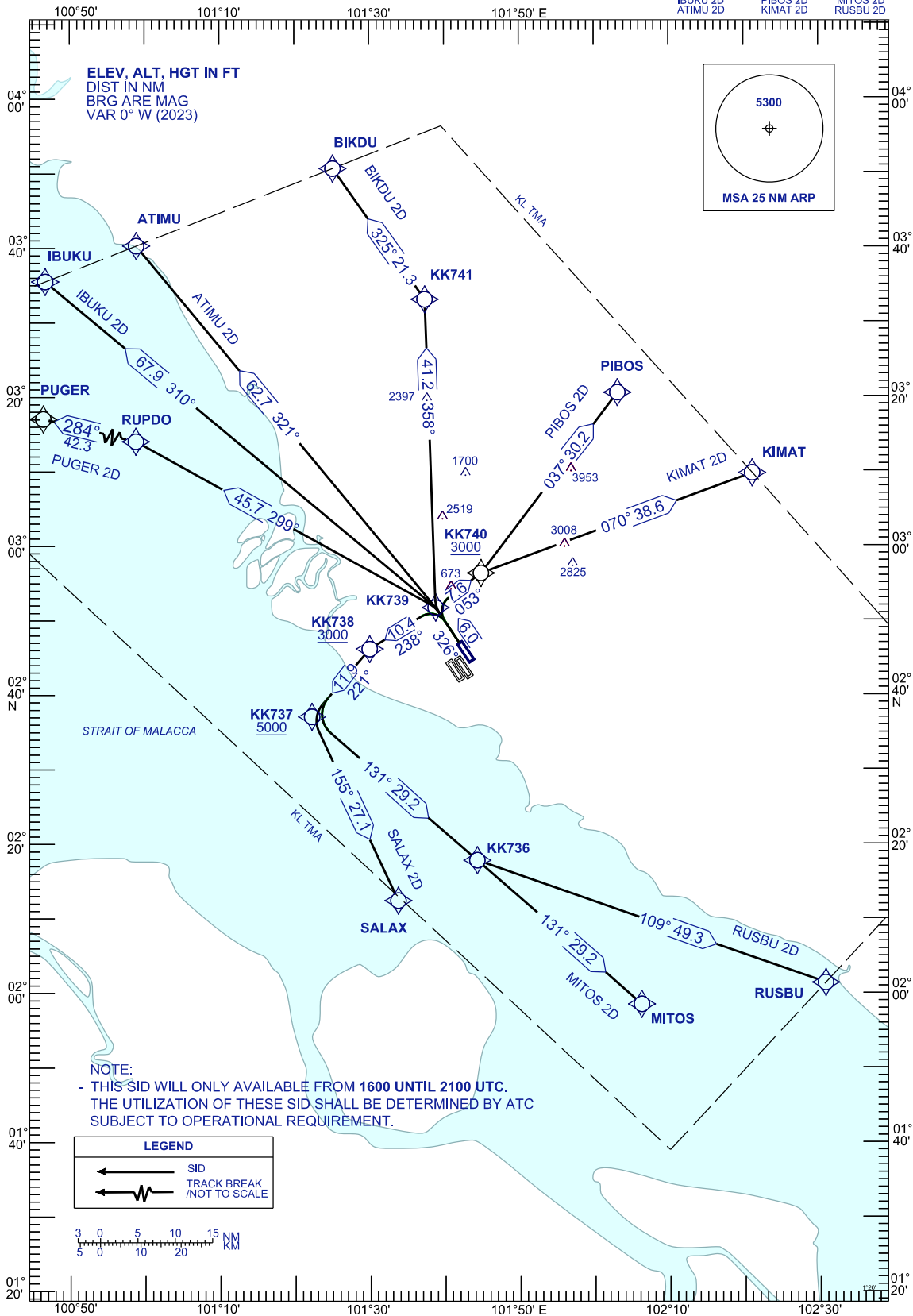
TRANSITION ALT 11000 FT

| | | | |
|-----|---------|------|---------|
| APP | 124.200 | TWR | 118.800 |
| | 118.650 | | GND |
| | 135.250 | ATIS | 126.450 |

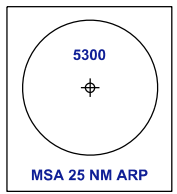
PUGER 2D
IBUKU 2D
ATIMU 2D

BIKDU 2D
PIBOS 2D
KIMAT 2D

SALAX 2D
MITOS 2D
RUSBU 2D



ELEV, ALT, HGT IN FT
DIST IN NM
BRG ARE MAG
VAR 0° W (2023)



NOTE:
- THIS SID WILL ONLY AVAILABLE FROM 1600 UNTIL 2100 UTC.
THE UTILIZATION OF THESE SID SHALL BE DETERMINED BY ATC
SUBJECT TO OPERATIONAL REQUIREMENT.

| LEGEND | |
|--------|------------------------------|
| | SID |
| | TRACK BREAK /NOT TO SCALE |

