

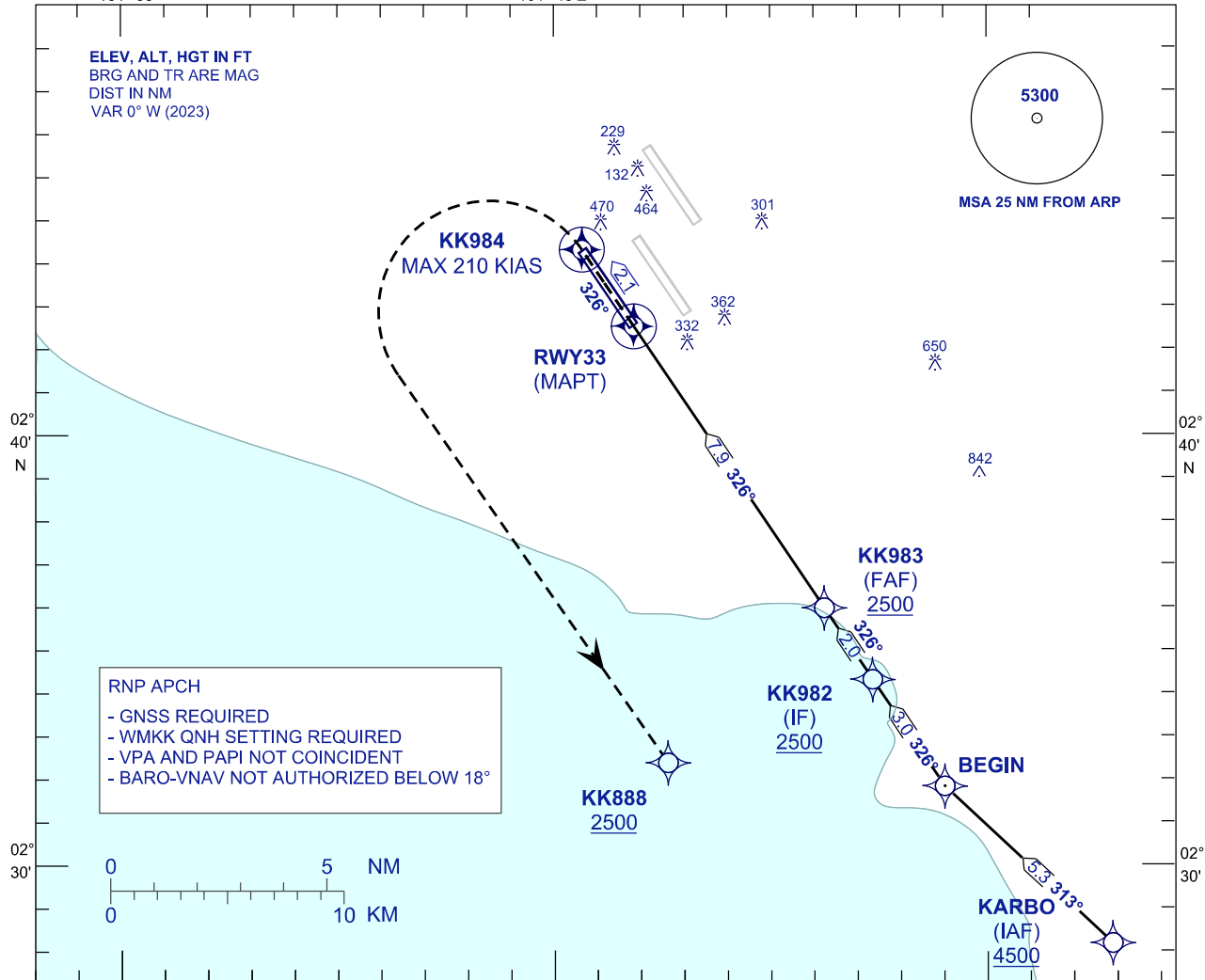
**INSTRUMENT
APPROACH
CHART - ICAO**

AERODROME ELEV 69 FT
HEIGHT RELATED TO
THR RWY 33 - ELEV 28 FT

APP	TWR	SMC	ATIS
119.45 125.85 125.10	119.80	118.050	128.05

**SEPANG/KL INTERNATIONAL
AIRPORT (WMKK)**

RNP X RWY 33

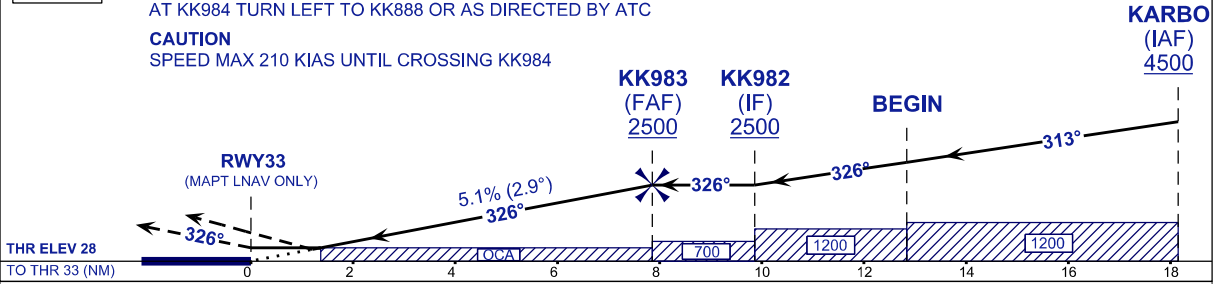


VPA 2.9°
TCH 52FT

MISSED APPROACH
AT MAPT MAINTAIN TR326 TO KK984 CLIMB TO 2500FT OR ABOVE.
AT KK984 TURN LEFT TO KK888 OR AS DIRECTED BY ATC

TRANSITION LEVEL FL130
TRANSITION ALT 11 000

CAUTION
SPEED MAX 210 KIAS UNTIL CROSSING KK984



STRAIGHT-IN APPROACH	OCA (OCH)			
CATEGORY OF AIRCRAFT	A	B	C	D
LNAV / VNAV	500 (472)			
LNAV	500 (472)			

GROUND SPEED (GS)	KNOTS	80	100	120	140	160	180
FAF - RWY33 (7.9 NM)	MIN:SEC	5:54	4:43	3:56	3:22	2:57	2:37
RATE OF DESCENT (318.5 FT/NM)	FT/MIN	410	510	620	720	820	920

DIST THR / RWY33	NM	7.9	7.0	6.0	5.0	4.0	3.0	2.0	1.0
ALTITUDE	FT	2500	2235	1927	1620	1312	1004	696	388