

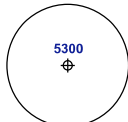
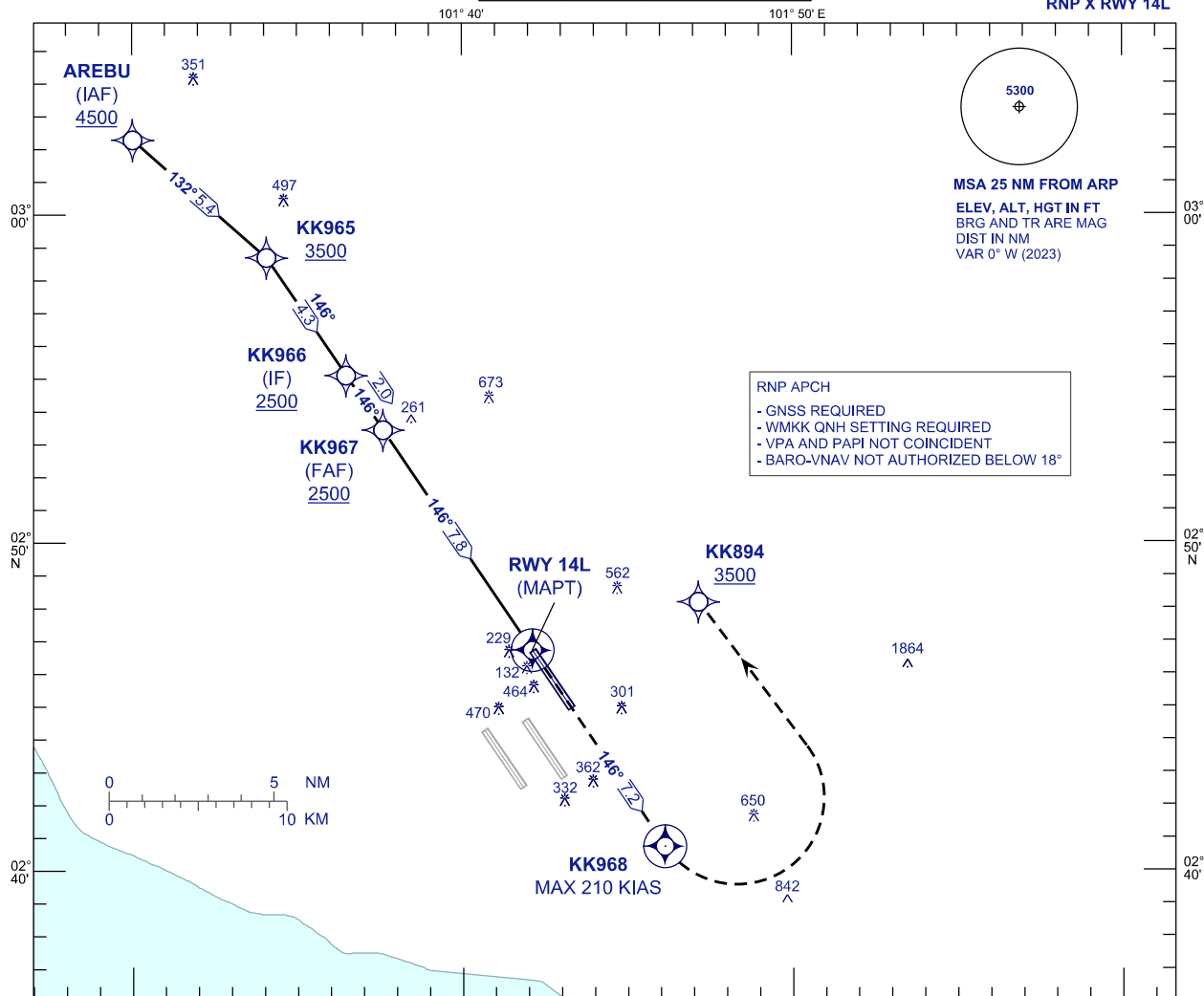
**INSTRUMENT  
APPROACH  
CHART - ICAO**

**AERODROME ELEV 69 FT**  
HEIGHT RELATED TO  
THR RWY 14L - ELEV 54 FT

APP 118.65 120.35 135.75	TWR 118.80	SMC 121.65	ATIS 128.05
-----------------------------------	---------------	---------------	----------------

**SEPANG/KL INTERNATIONAL  
AIRPORT (WMKK)**

RNP X RWY 14L



**MSA 25 NM FROM ARP**  
ELEV, ALT, HGT IN FT  
BRG AND TR ARE MAG  
DIST IN NM  
VAR 0° W (2023)

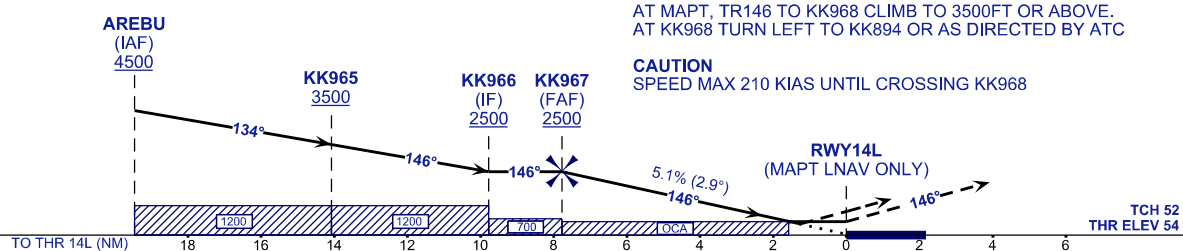
**RNP APCH**  
- GNSS REQUIRED  
- WMKK QNH SETTING REQUIRED  
- VPA AND PAPI NOT COINCIDENT  
- BARO-VNAV NOT AUTHORIZED BELOW 18°

VPA 2.9°  
TCH 52 FT

TRANSITION LEVEL FL130  
TRANSITION ALT 11 000

**MISSED APPROACH**  
AT MAPT, TR146 TO KK968 CLIMB TO 3500FT OR ABOVE.  
AT KK968 TURN LEFT TO KK894 OR AS DIRECTED BY ATC

**CAUTION**  
SPEED MAX 210 KIAS UNTIL CROSSING KK968



STRAIGHT-IN APPROACH	OCA (OCH)			
CATEGORY OF AIRCRAFT	A	B	C	D
LNAV / VNAV	494 (440)			
LNAV	590 (536)			

GROUND SPEED (GS)	KNOTS	80	100	120	140	160	180		
FAF - RWY14L (7.8 NM)	MIN:SEC	5:50	4:40	3:53	3:20	2:55	2:36		
RATE OF DESCENT (5.1% / 2.9°)	FT/MIN	410	510	620	720	820	920		
DIST THR / RWY14L	NM	7.8	7.0	6.0	5.0	4.0	3.0	2.0	1.0
ALTITUDE	FT	2500	2261	1953	1646	1338	103	722	414