

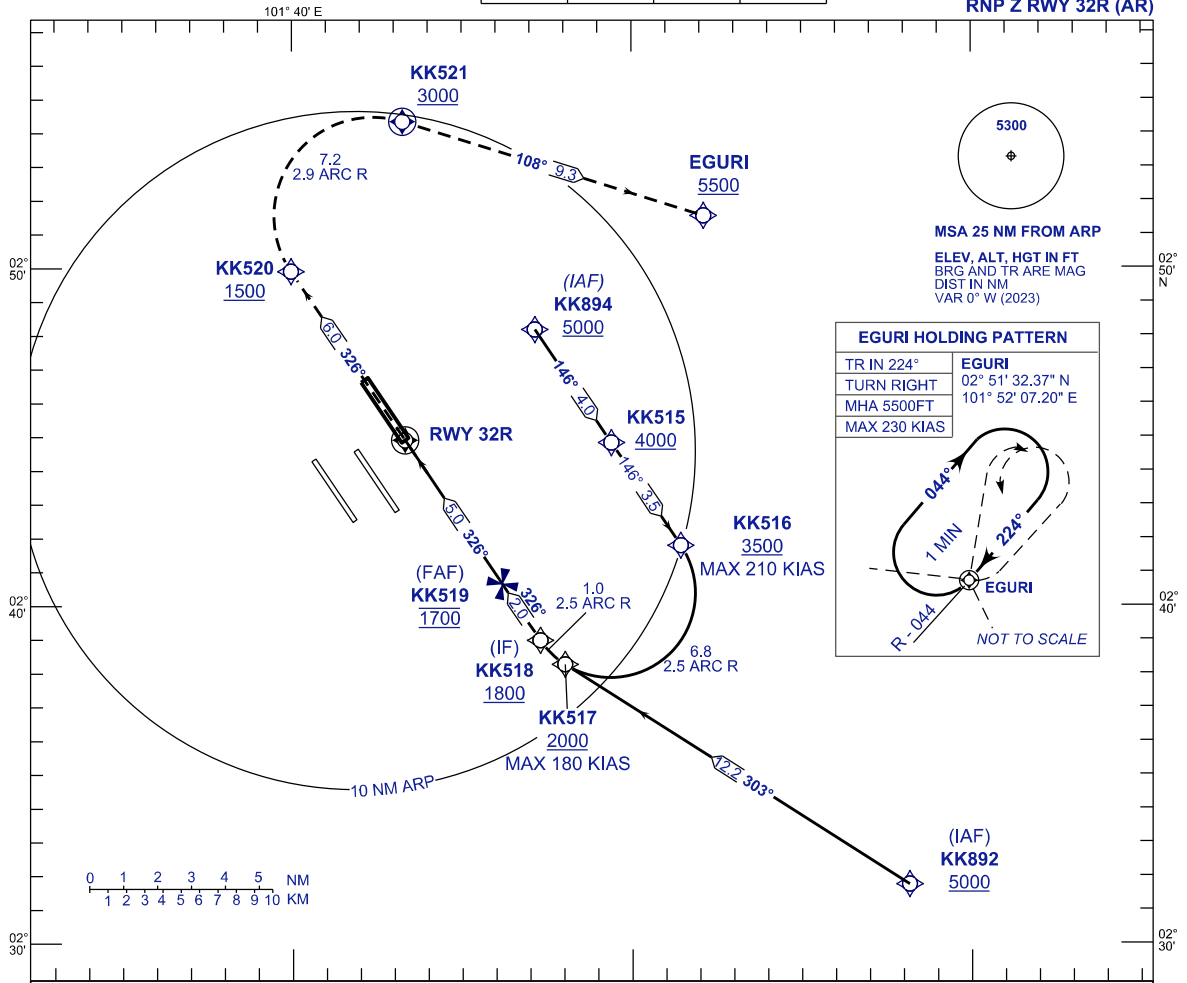
**INSTRUMENT  
APPROACH  
CHART - ICAO**

**AERODROME ELEV 69 FT**  
HEIGHT RELATED TO  
THR RWY 32R - ELEV 69 FT

APP 121.25	TWR 118.50 118.80	SMC 121.65	ATIS 128.05
---------------	-------------------------	---------------	----------------

**SEPANG/KL INTERNATIONAL  
AIRPORT (WMKK)**

**RNP Z RWY 32R (AR)**



5300

**MSA 25 NM FROM ARP**

ELEV. ALT. HGT IN FT  
BRG AND TR ARE MAG  
DIST IN NM  
VAR 0° W (2023)

**EGURI HOLDING PATTERN**

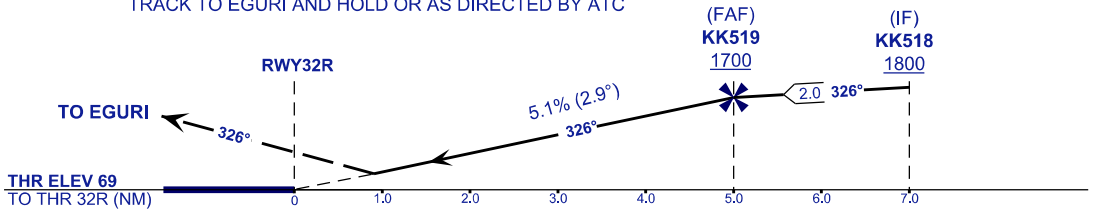
TR IN 224°	EGURI
TURN RIGHT	02° 51' 32.37" N
MHA 5500FT	101° 52' 07.20" E
MAX 230 KIAS	

NOT TO SCALE

VPA 2.9°  
RDH 56FT

**MISSED APPROACH**  
CLIMB TO 5500FT OR ABOVE VIA RNP (AR) MISSED APPROACH,  
TRACK TO EGURI AND HOLD OR AS DIRECTED BY ATC

TRANSITION LEVEL FL130  
TRANSITION ALT 11 000 FT



STRAIGHT - IN APPROACH	OCA (OCH)	
CATEGORY OF AIRCRAFT	C	D
RNP (0.30)	499 (430)	
CIRCLING AND ALTERNATE N/A		

**AUTHORIZATION REQUIRED**

**NOTES**

- 1) APPROACH NOT AUTHORIZED WHEN AIRPORT TEMPERATURE BELOW 18°C OR ABOVE 40°C.
- 2) RF REQUIRED.
- 3) WMKK ALTIMETER SETTING REQUIRED.
- 4) GNSS REQUIRED.
- 5) PAPI AND VERTICAL PATH ANGLE NOT COINCIDENT.
- 6) RNP 0.30 FROM IAFS TO THRESHOLD.
- 7) RNP 0.50 FROM RWY32R TO KK520

DISTANCE IN NM. BEARING ARE MAGNETIC. ELEVATION IN FEET AMSL.