

**INSTRUMENT  
APPROACH  
CHART - ICAO**

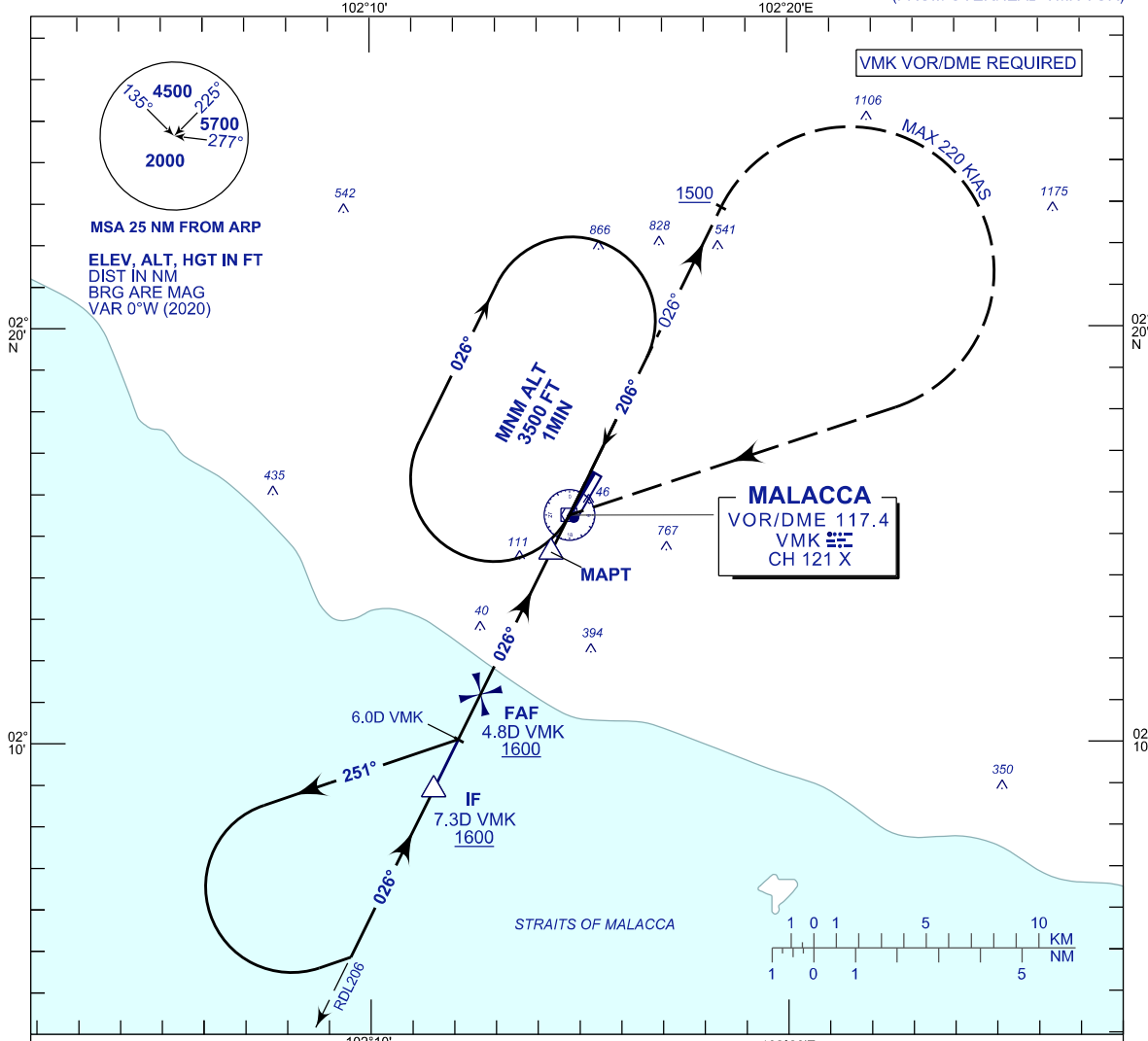
**AERODROME ELEV 39 FT**  
HEIGHTS RELATED TO  
THR RWY 03 - ELEV 18 FT

TWR	118.00
SMC	121.60
ATIS	127.45

**MALACCA/MALACCA (WMKM)**

**VOR Y RWY 03**

(FROM OVERHEAD VMK VOR)



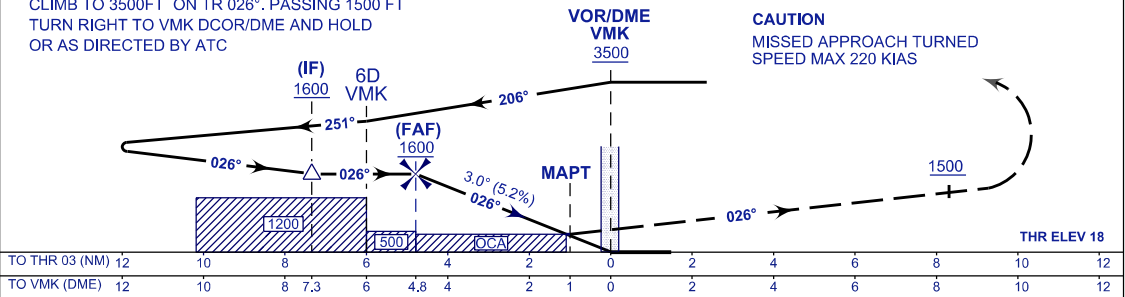
**MISSED APPROACH**

CLIMB TO 3500FT ON TR 026°. PASSING 1500 FT  
TURN RIGHT TO VMK DCOR/DME AND HOLD  
OR AS DIRECTED BY ATC

TRANSITION ALT 11 000

**CAUTION**

MISSED APPROACH TURNED  
SPEED MAX 220 KIAS



OCA (OCH)	A	B	C
VOR/DME	440(422)		

DIST DME VMK	NM	4.8	3.8	2.8	1.8	0.8
DIST THR/RWY 03	NM	4.8	3.8	2.8	1.8	0.8
ALTITUDE	FT	1600	1281	963	644	326

GS	KT	80	100	120	140	160	180
FAF - RWY03 (4.8NM)	MIN:SEC	3:36	2:53	2:24	2:04	1:48	1:36
RATE OF DESCEND (318.6 FT/NM)	FT/MIN	420	530	630	740	840	950

CHANGES : AERODROME ELEVATION.