

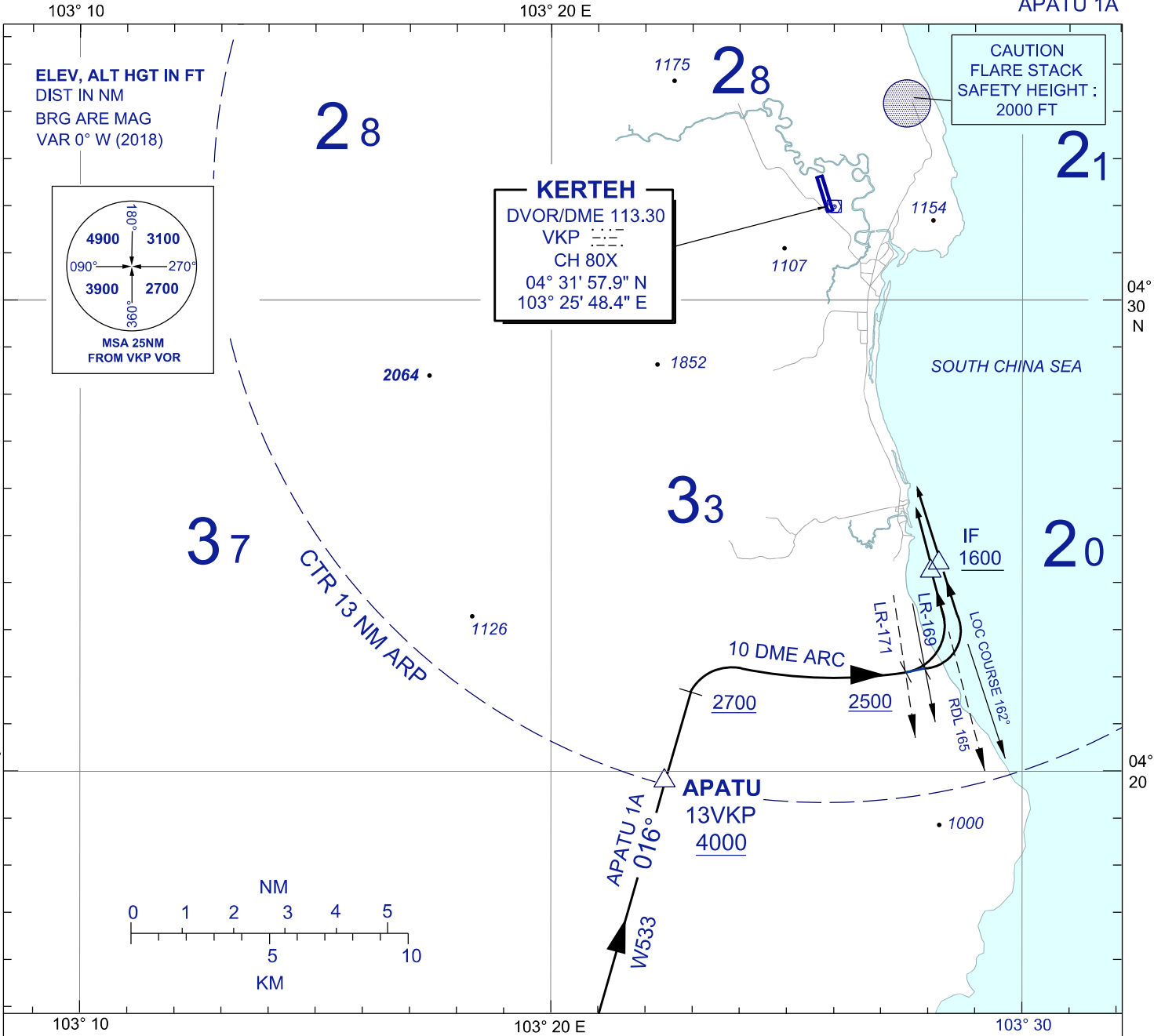
# STANDARD ARRIVAL CHART INSTRUMENT (STAR) - ICAO

**KERTEH/KERTEH (WMKE)  
RWY 34**

TRANSITION ALTITUDE  
11,000 FT

TWR 123.3  
258.5  
SMC 121.8  
ATIS 128.25

VOR/DME  
APATU 1A



## APATU ONE ALPHA ARRIVAL

- FROM APATU TRACK TO VKP VOR INBOUND
- THEN TRACK VIA 10 DME ARC TO IF
- TO INTERCEPT LOC COURSE OR RDL165

## COMMUNICATION FAILURE :

- SQUAWK 7600
- IF UNDER PILOT NAVIGATION, CONTINUE ON STAR AND LAND.
- IF BELOW MSA, CLIMB TO MSA, THEN TRACK TO INTERCEPT CLEARED
- OR PREVIOUSLY ASSIGNED STAR AND LAND.

CHANGES : UPDATING THE CHART FORMAT