

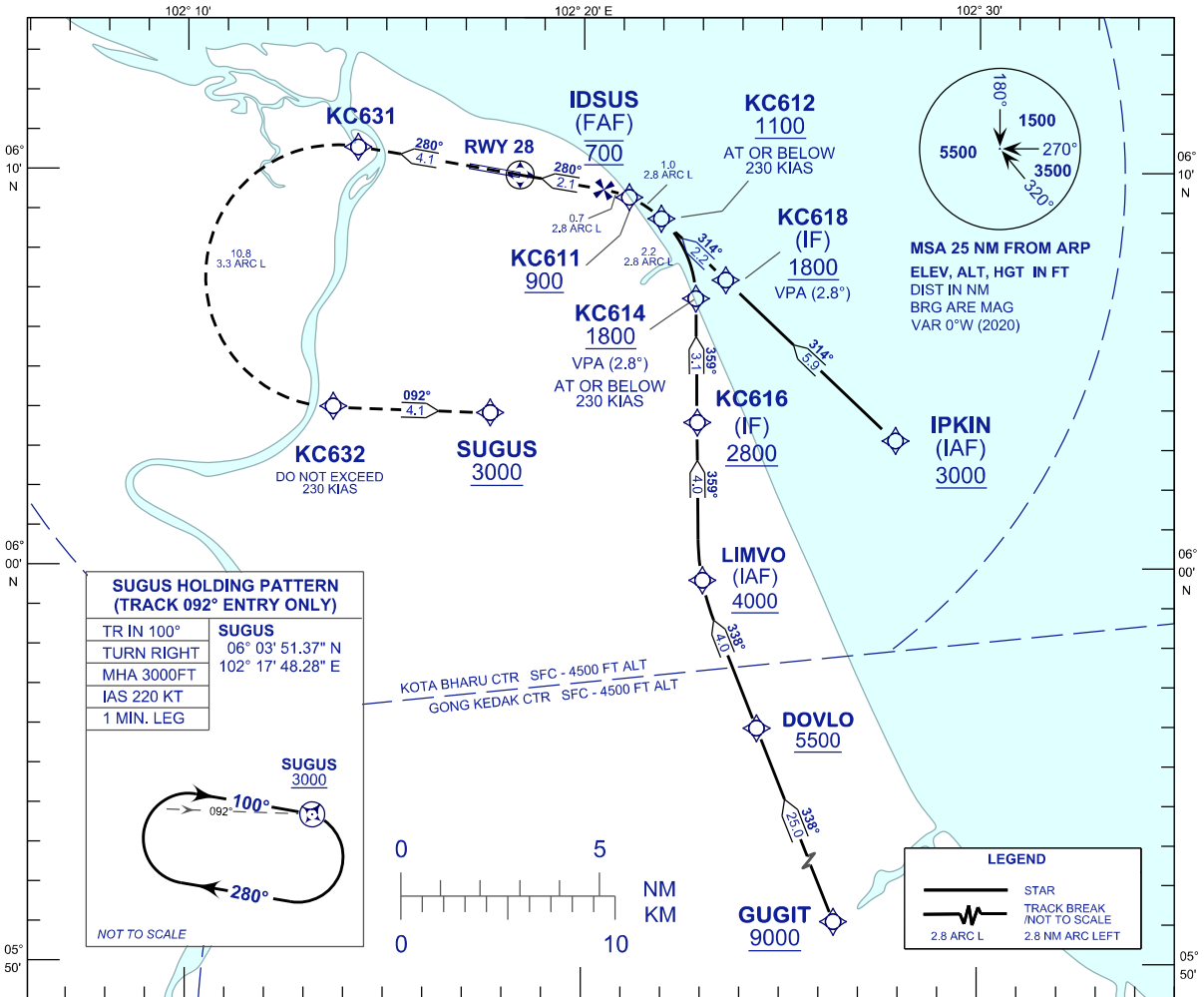
**INSTRUMENT  
APPROACH  
CHART - ICAO**

**AERODROME ELEV 16 FT**  
HEIGHT RELATED TO  
THR RWY 28 - ELEV 13 FT

APP 120.85, 130.3  
TWR 122.5  
SMC 121.6  
ATIS 128.85

**KOTA BHARU/  
SULTAN ISMAIL PETRA (WMKC)**

**RNP Z RWY 28 (AR)**



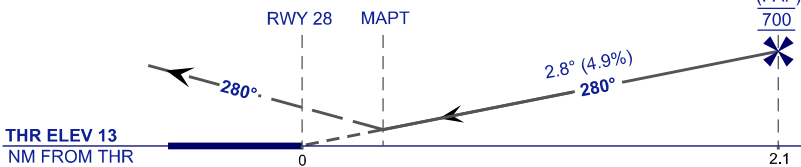
VPA 2.8°  
RDH 50 FT

**MISSED APPROACH**

CLIMB TO 3000 FT ON RNP MISSED APPROACH TRACK TO SUGUS OR AS DIRECTED BY ATC.

TRANSITION LEVEL FL130  
TRANSITION ALT 11000 FT

VSS PENETRATIONS 500 M  
PRIOR TO THR.



STRAIGHT-IN APPROACH	OCA (OCH)	
CATEGORY OF AIRCRAFT	C	D
RNP (0.30)	440 (427)	
CIRCLING AND ALTERNATE N/A		

**AUTHORIZATION REQUIRED**

**NOTES:**

- 1) APPROACH NOT AUTHORIZED WHEN AIRPORT TEMPERATURE BELOW 18°C OR ABOVE 39°C.
- 2) RF REQUIRED.
- 3) WMKC ALTIMETER SETTING REQUIRED.
- 4) GNSS REQUIRED.
- 5) PAPI AND VERTICAL PATH ANGLE NOT COINCIDENT.
- 6) RNP 1.0 REQUIRED FROM GUGIT TO IAF.
- 7) RNP 0.3 REQUIRED FROM IAF'S TO FAF.
- 8) DUE TO GONG KEDAK CTR, MAINTAIN 4500 FT OR ABOVE UNTIL 2.4 NM TO LIMVO.