

**STANDARD DEPARTURE CHART
INSTRUMENT (SID) - ICAO**

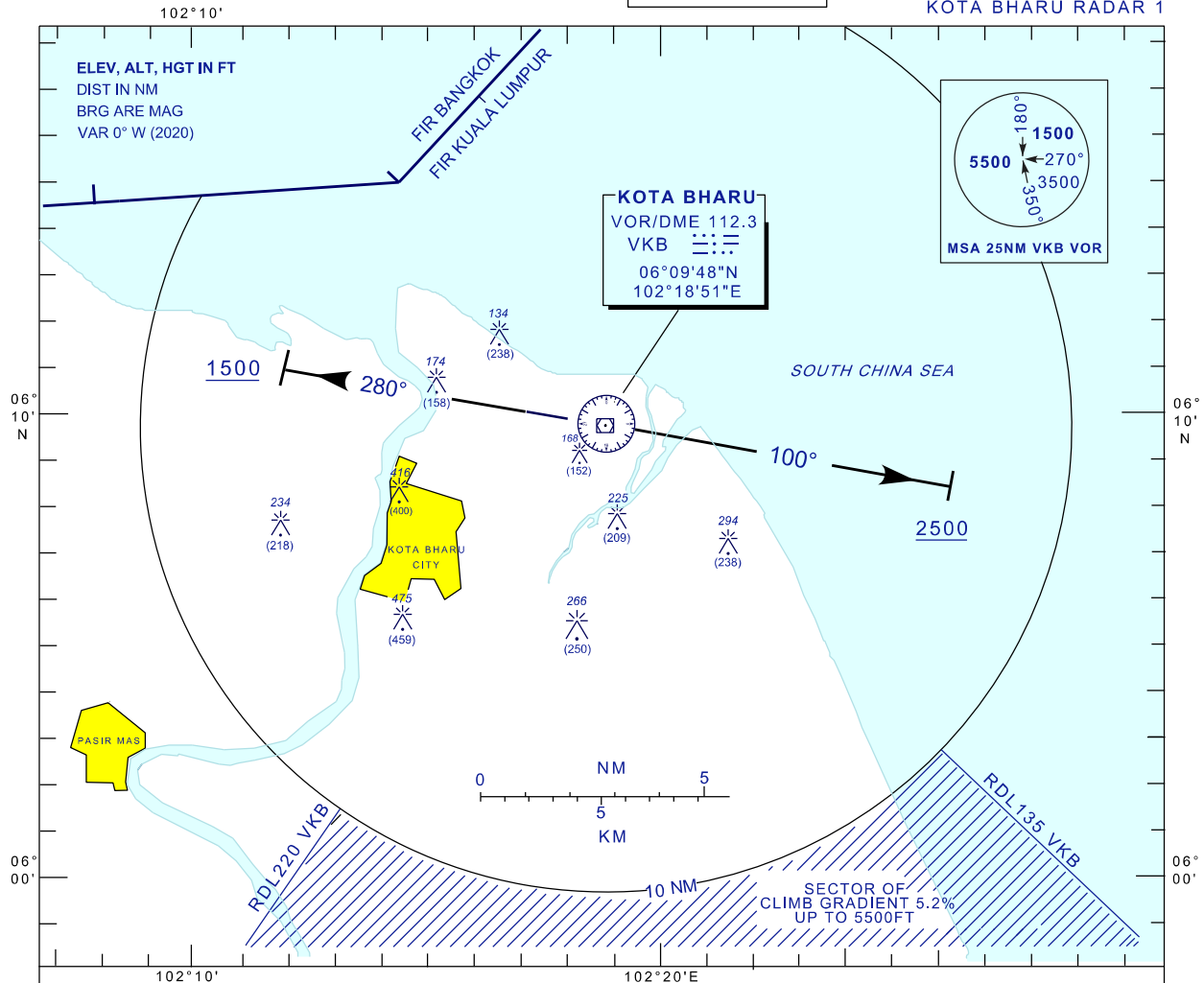
**KOTA BHARU (WMKC)/
SULTAN ISMAIL PETRA**

TRANSITION ALTITUDE
11 000FT

APP 120.85, 130.3
TWR 122.5
SMC 121.6
ATIS 128.85

RWY 10/28

KOTA BHARU RADAR 1



RATE OF CLIMB							
GND SPEED - KT	75	100	150	200	250	300	
GRADIENT	3.3%	250	334	501	668	835	1003
	5.2%	395	527	790	1053	1316	1580

RWY10
TRACK HEADING 100°
ON PASSING 2500FT TURN TO ASSIGNED HEADING
CONTACT KOTA BHARU APPROACH WHEN AIRBORNE

RWY28
TRACK HEADING 280°
ON PASSING 1500FT TURN TO ASSIGNED HEADING
CONTACT KOTA BHARU APPROACH WHEN AIRBORNE

COMMUNICATION FAILURE:

IMMEDIATELY SQUAWK 7600
MAINTAIN ASSIGNED HEADING CLIMB TO MSA OR LAST ASSIGNED LEVEL IF HIGHER
AS APPLICABLE FOR 2 MINUTES, THEN CLIMB TO FLIGHT PLAN LEVEL AND INTERCEPT
FLIGHT PLAN TRACK

CHANGES : MAGNETIC VARIATION