

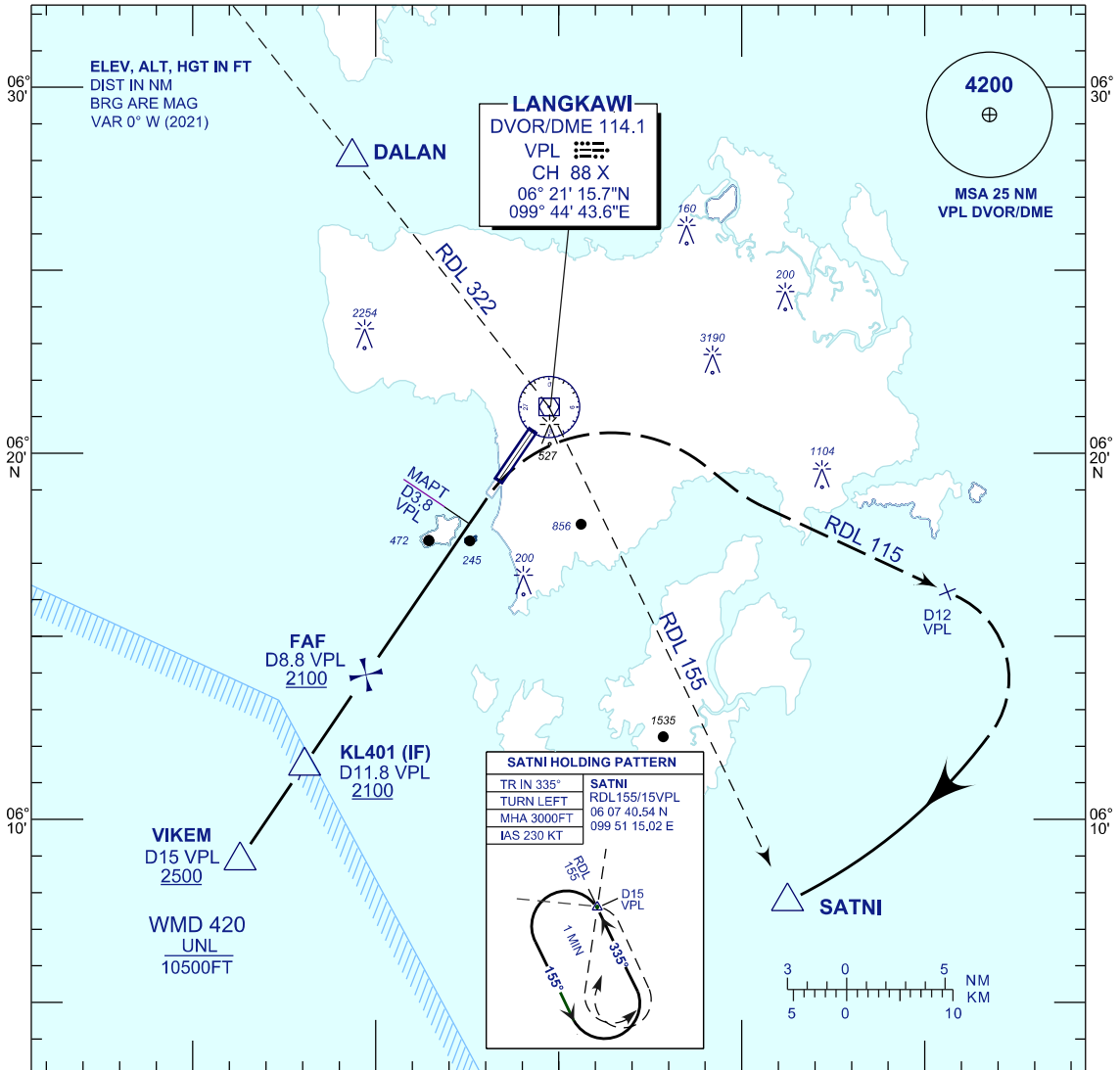
**INSTRUMENT  
APPROACH  
CHART - ICAO**

**AERODROME ELEV 23 FT**  
HEIGHT RELATED TO DISP  
THR RWY 03 - ELEV 16 FT  
ILS REF. DATUM 53 FT

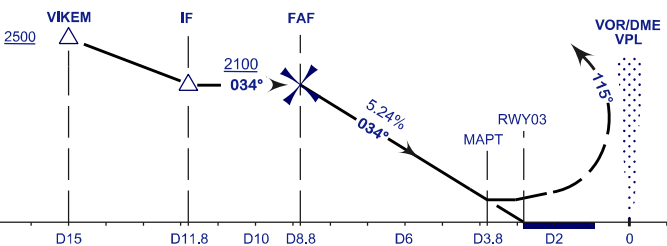
APP	119.4, 257.8
TWR	118.5
SMC	121.8
ATIS	128.2

**LANGKAWI/LANGKAWI  
INTERNATIONAL AIRPORT (WMKL)  
RWY 03**

VOR Z  
(15 DME ARC)



TRANSITION LEVEL FL130  
TRANSITION ALT 11000



**MISSED APPROACH**  
AT MAPT TURN RIGHT TO INTERCEPT  
RDL115 VPL CLIMB TO 3000 FT  
AT 12 DME VPL TURN RIGHT TO  
JOIN 15 DME ARC VPL TO SATNI AND  
HOLD OR AS DIRECTED BY ATC

**CAUTION**  
MISSED APPROACH TURN SPEED  
MAX IAS 185 KT

OCA (OCH)	A	B	C	D
VOR/DME	810 (794)			

DME VPL	NM	8.8	7.8	6.8	5.8	4.8	3.8	2.8
DIST THR/RWY03	NM	6.3	5.3	4.3	3.3	2.3	1.3	0.3
ALTITUDE	FT	2070	1750	1430	1110	790	480	160

GS	KT	80	100	120	140	160	180
FAF03 - RWY03 (6.4NM)	MIN:SEC	4:48	3:50	3:12	2:45	2:24	2:08
RATE OF DESCEND(328.37FT/NM)	FT/MIN	430	540	650	760	860	970

**CHANGES : AERODROME ELEVATION**