

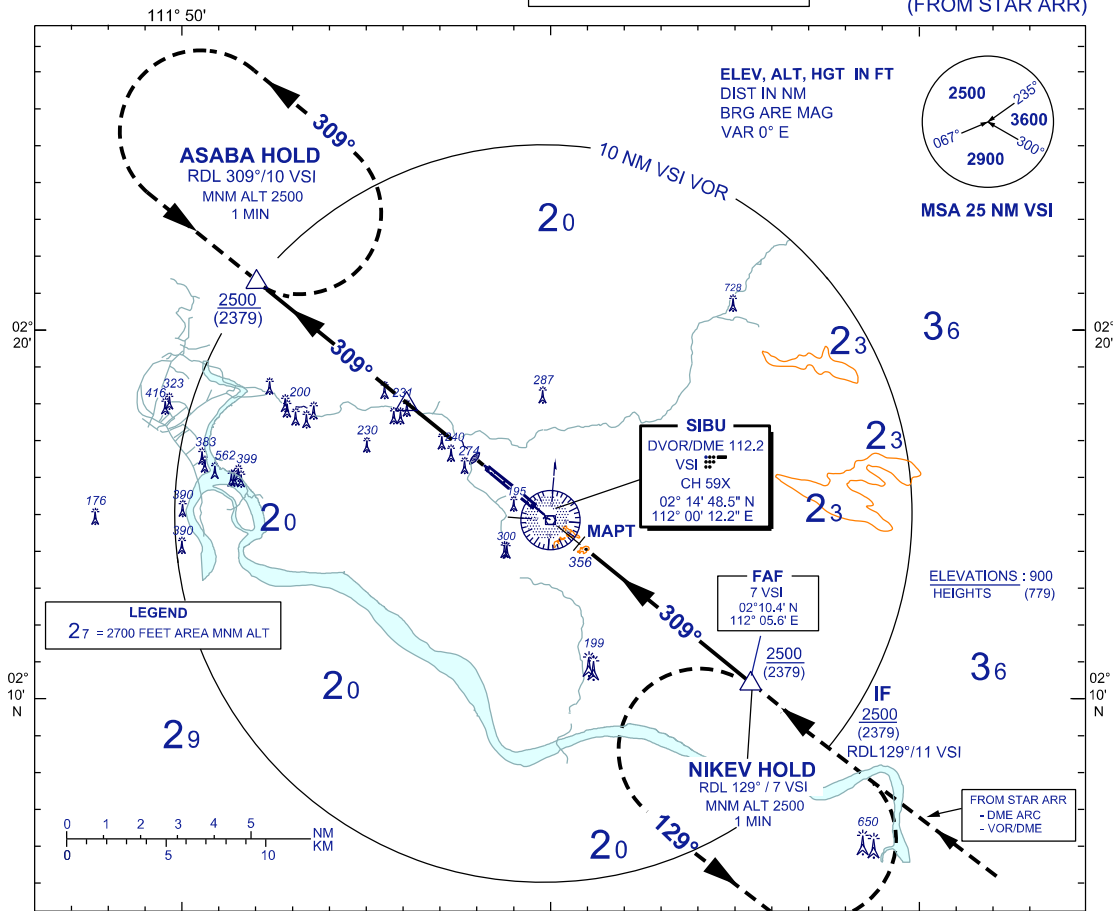
**INSTRUMENT APPROACH CHART - ICAO**

**AERODROME ELEV 121 FT**  
 HEIGHT RELATED TO  
 THR RWY31 - ELEV 121 FT

APP 122.6(P), 124.4 (S)  
 TWR 123.2  
 SMC 121.9  
 ATIS 127.65  
 EMERG 121.5

**SIBU/SIBU (WBGs) RWY 31**

VOR/DME  
 (FROM STAR ARR)

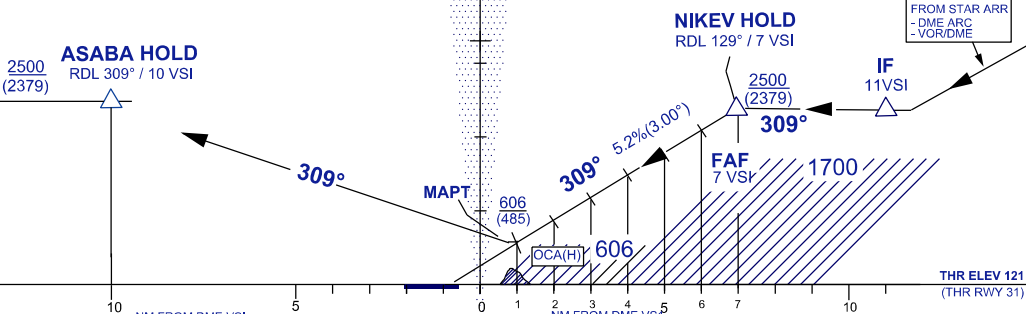


USE QNH

TRANSITION ALT 11000

DIST BY DME (NM)	7.0	6.0	5.0	4.0	3.0	2.0	1.0
ALT 3° APCH PATH (FT)	2500 (2379)	2182 (2061)	1864 (1743)	1546 (1425)	1228 (1107)	910 (789)	606 (485)

**MISSED APPROACH**  
 TRACK ON 309° TO 2500 FT,  
 TO ENTER DME HOLD AT ASABA  
 OR AS DIRECTED BY ATC.



OCA / H (FT)		A	B	C	D
STRAIGHT-IN APPROACH	VOR/DME	606(485) / 0.7 DME VSI		606(485) / 0.7 DME VSI	
CIRCLING		660(539)	660(539)	760(639)	760(639)

GROUND SPEED (KT)		70	90	120	150	180	210
FAF - MAPT = 6.0NM	MIN : SEC	5:08	4:00	3:00	2:24	2:00	1:43
RATE OF DESCENT (3°)	FT./ MIN	368	473	631	789	947	1107

CHANGES : UPDATING THE CHART FORMAT