

**STANDARD ARRIVAL CHART
INSTRUMENT (STAR) - ICAO**

TRANSITION ALTITUDE
11,000 FT

APP 119.1
TWR 118.3
GND 121.6
ATIS 127.4

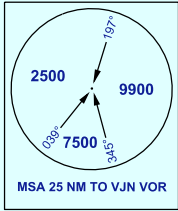
**KOTA KINABALU/KOTA KINABALU
(WBKK)
RWY 20**

BANK ANGLE : 25° OR 3°/SEC

115° 40'E

116° 00'E

(VOR / DME)



ELEV, ALT, HGT IN FT
DIST IN NM
BRG ARE MAG
VAR 0° W

RDL 290 17 VJN
05° 59' 47.6" N
115° 46' 0.3" E
1 MIN RIGHT HAND
IAS MAX 220 KT
4000-FL 140

ADLEX
FL 140
RDL 272/47VJN

ADLEX 1E

25

EGENU
FL 130
RDL 257/40VJN

EGENU 2E

RDL 257 17 VJN
05° 50' 06.5" N
115° 45' 25.1" E
1 MIN RIGHT HAND
IAS MAX 220 KT
4000-FL 140

GOKIS

19D 6500

077°

257°

19D 8000

052°

19D 8000

048°

19D 8000

043°

19D 8000

038°

SUKUS 1E

DULIM 2E

OREKO 1E

PIMEP 2E

SUKUS
FL 150
RDL 232
40VJN

DULIM
FL 150
RDL 228
40VJN

OREKO
FL 150
RDL 223
40VJN

PIMEP
FL 150
RDL 218
40VJN

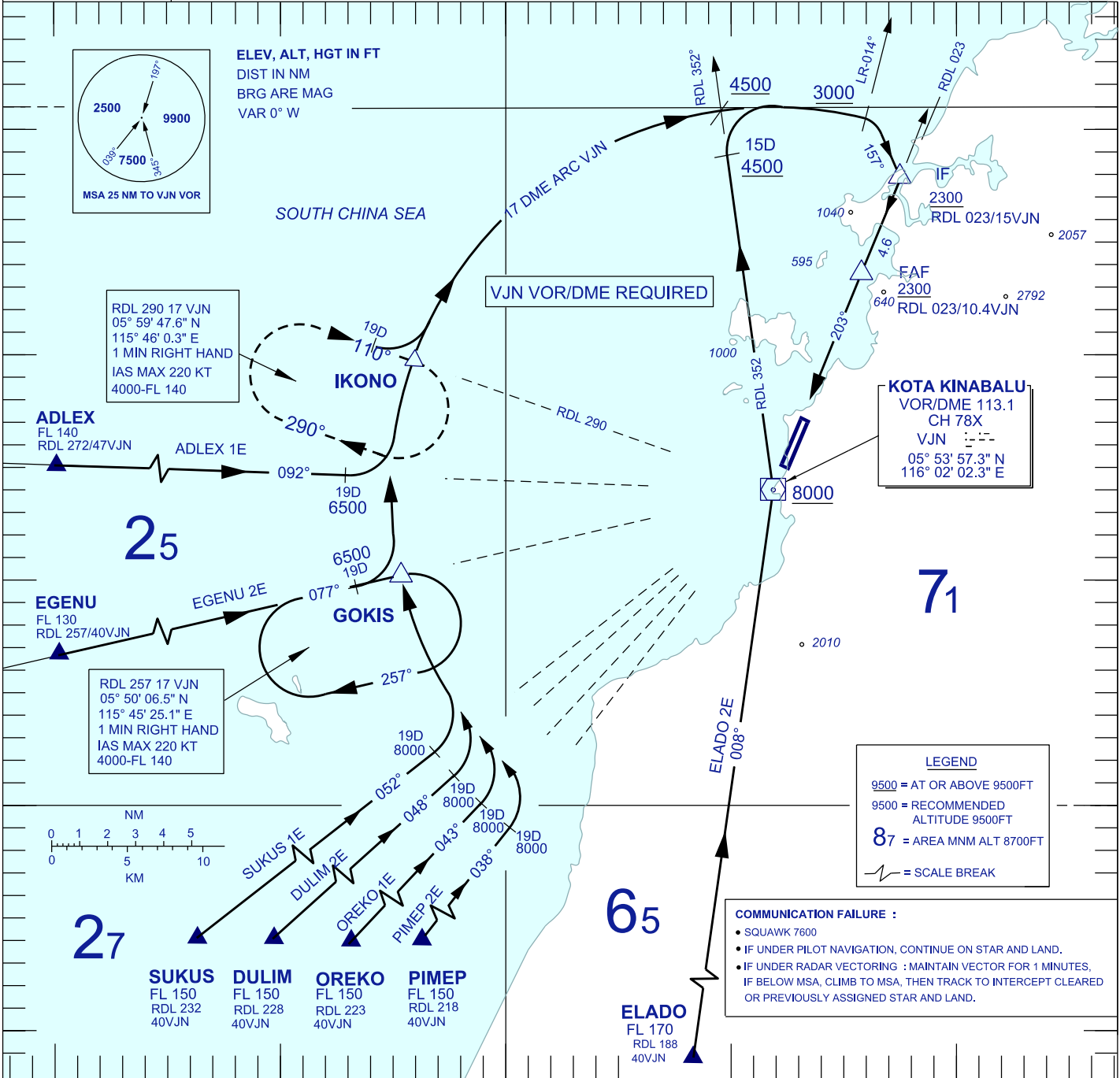
ELADO
FL 170
RDL 188
40VJN

VJN VOR/DME REQUIRED

KOTA KINABALU
VOR/DME 113.1
CH 78X
VJN
05° 53' 57.3" N
116° 02' 02.3" E

LEGEND
9500 = AT OR ABOVE 9500FT
9500 = RECOMMENDED ALTITUDE 9500FT
87 = AREA MNM ALT 8700FT
= SCALE BREAK

COMMUNICATION FAILURE :
• SQUAWK 7600
• IF UNDER PILOT NAVIGATION, CONTINUE ON STAR AND LAND.
• IF UNDER RADAR VECTURING : MAINTAIN VECTOR FOR 1 MINUTES, IF BELOW MSA, CLIMB TO MSA, THEN TRACK TO INTERCEPT CLEARED OR PREVIOUSLY ASSIGNED STAR AND LAND.



115° 40'E

116° 00'E

CHANGES : UPDATING THE CHART FORMAT