

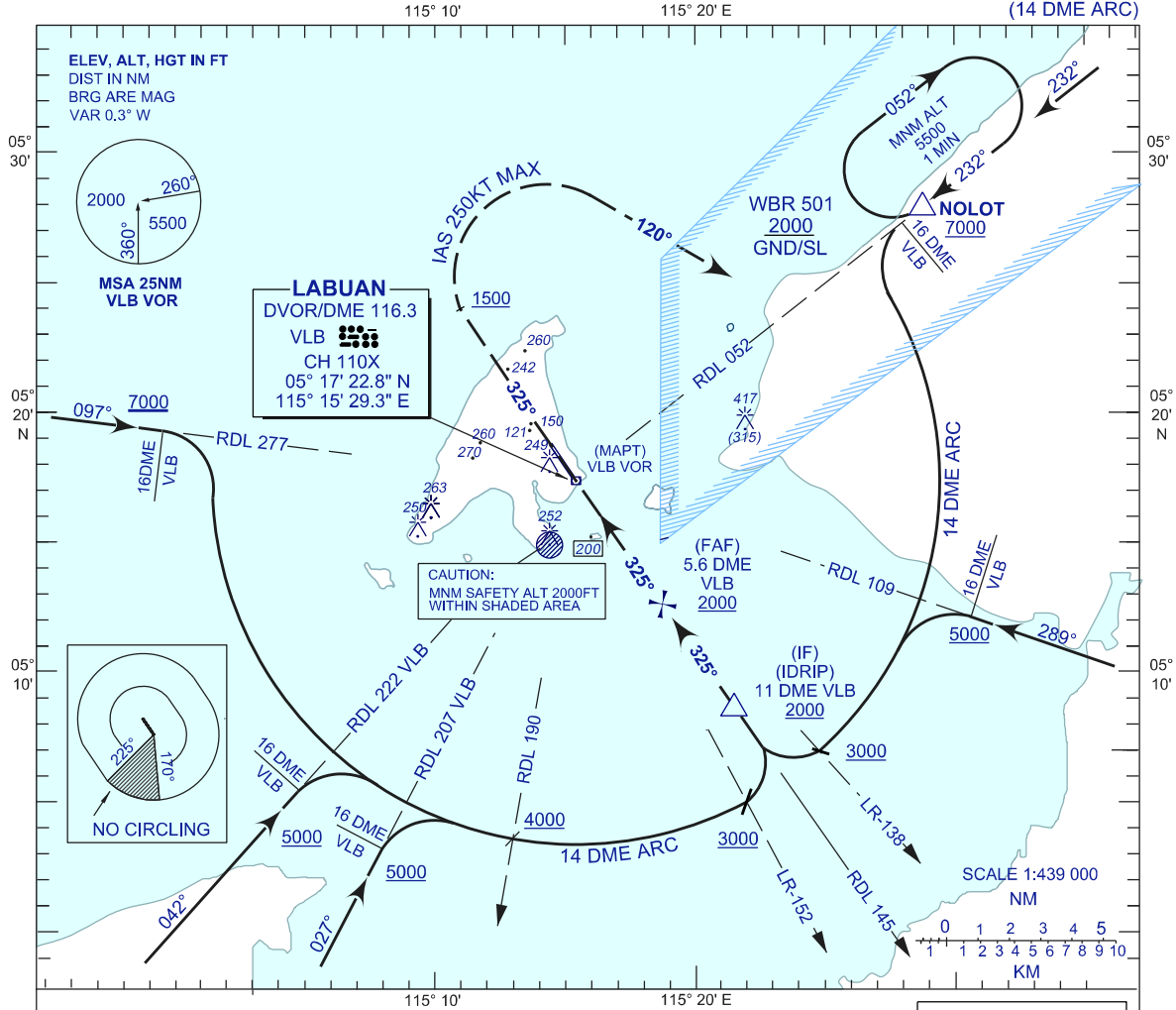
**INSTRUMENT
APPROACH
CHART - ICAO**

AERODROME ELEV 100 FT
HEIGHTS RELATED TO
THR RWY 32 - ELEV 95 FT

APP - 119.7, 249.3
TWR - 118.1, 238.1
SMC - 118.35, 235.1
ATIS - 126.85

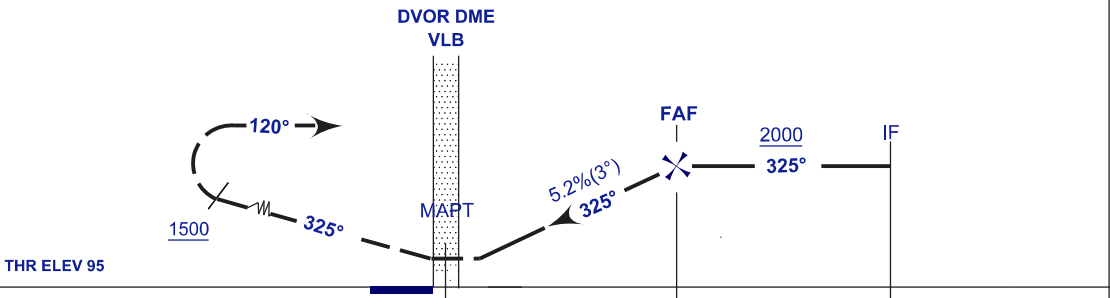
**LABUAN/LABUAN (WBKL)
RWY 32**

VOR Z
(14 DME ARC)



MISSED APPROACH
CLIMB ON 325°(RDL 325 VLB) TO 5500FT,
ON PASSING 1500FT, TURN RIGHT TRACK 120°
TO INTERCEPT RDL052 VLB TO NOLOT TO
HOLD OR AS DIRECTED BY ATC.

TRANSITION ALT 11000



NM FROM DME VLB 0 0.6 1.2 1.8 2.4 3.0 3.6 4.2 4.8 5.4 6.0 6.6 7.2 7.8 8.4 9.0 9.6 10.2 10.8 11.4 12.0 12.6 13.2 13.8 14.4

OCA (OCH)	A	B	C	D
VOR/DME	500 (405)			
CIRCLING	700 (600)		900 (800)	

DME VLB	5.6	4.6	3.6	2.6	1.6	0.6
DIST THR / RWY32	5.8	4.8	3.8	2.8	1.8	0.8
ALTITUDE	2000	1670	1350	1030	710	400

GS	KT	80	100	120	140	160	180
FAF - RWY32 (5.8NM)	MIN:SEC	4:21	3:29	2:54	2:29	2:11	1:56
RATE OF DESCEND(327 FT/NM)	FT/MIN	430	540	650	760	870	980