

STANDARD DEPARTURE CHART INSTRUMENT (SID) - ICAO

LABUAN/LABUAN (WBKL)
RWY 14 (RNAV 1)

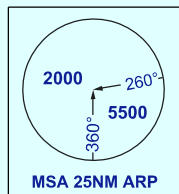
TRANSITION ALTITUDE
11,000 FT

APP 119.7, 249.3
TWR 118.1, 238.1
SMC 118.35, 235.1
ATIS 126.85

LAVED 1R
BRUNEI 1R
LIMBANG 1R
IDATU 1R
NOLOT 1R

115° 00' 115° 10'E

ELEV, ALT, HGT IN FT
DIST IN NM
BRG ARE MAG
VAR 0.3° W



LABUAN
DVOR/DME 116.3
VLB
CH 110 X
05° 17' 22.8" N
115° 15' 29.3" E

WBR 501
2000
GND/SEA

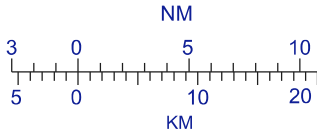
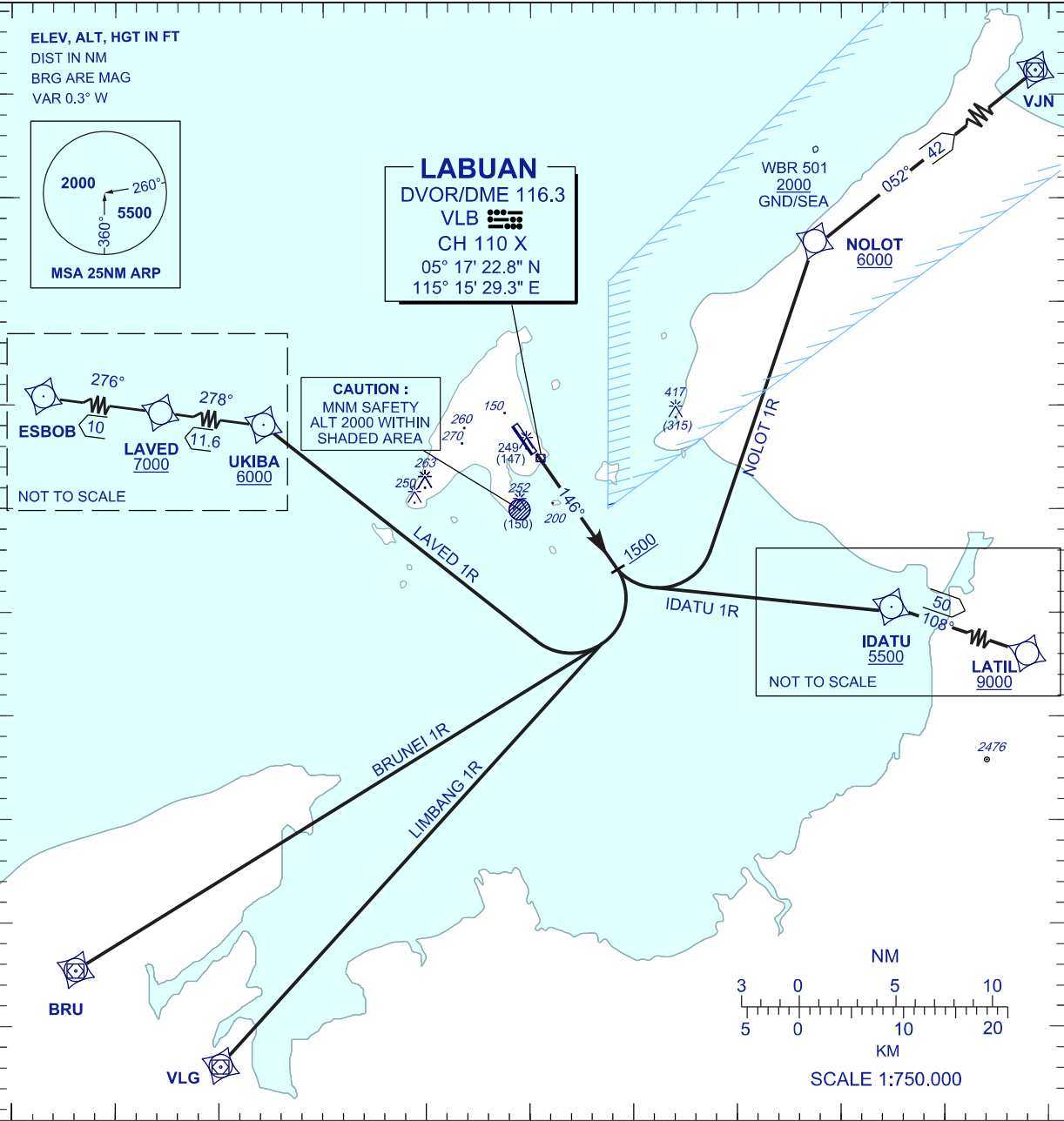
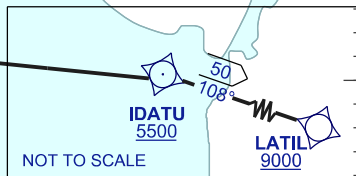
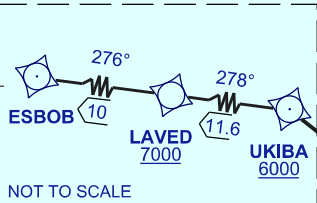
NOLOT
6000

VJN

05° 30'
05° 20' N
05° 10'
05° 00'

05° 30'
05° 20' N
05° 10'
05° 00'

CAUTION :
MNM SAFETY
ALT 2000 WITHIN
SHADED AREA



COMMUNICATION FAILURE :

- SQUAWK 7600°
- IF UNDER PILOT NAVIGATION, MAINTAIN LAST ASSIGNED LEVEL FOR 3 MINUTES, IF NO ONWARD CLEARANCE IS RECEIVED, SUBSEQUENTLY CLIMB TO COMPLY WITH SID.
- IF UNDER RADAR VECTORED : MAINTAIN VECTOR FOR 2 MINUTES, IF BELOW MSA, CLIMB TO MSA, THEN TRACK TO INTERCEPT CLEARED OR PREVIOUSLY ASSIGNED SID TO DESTINATION.