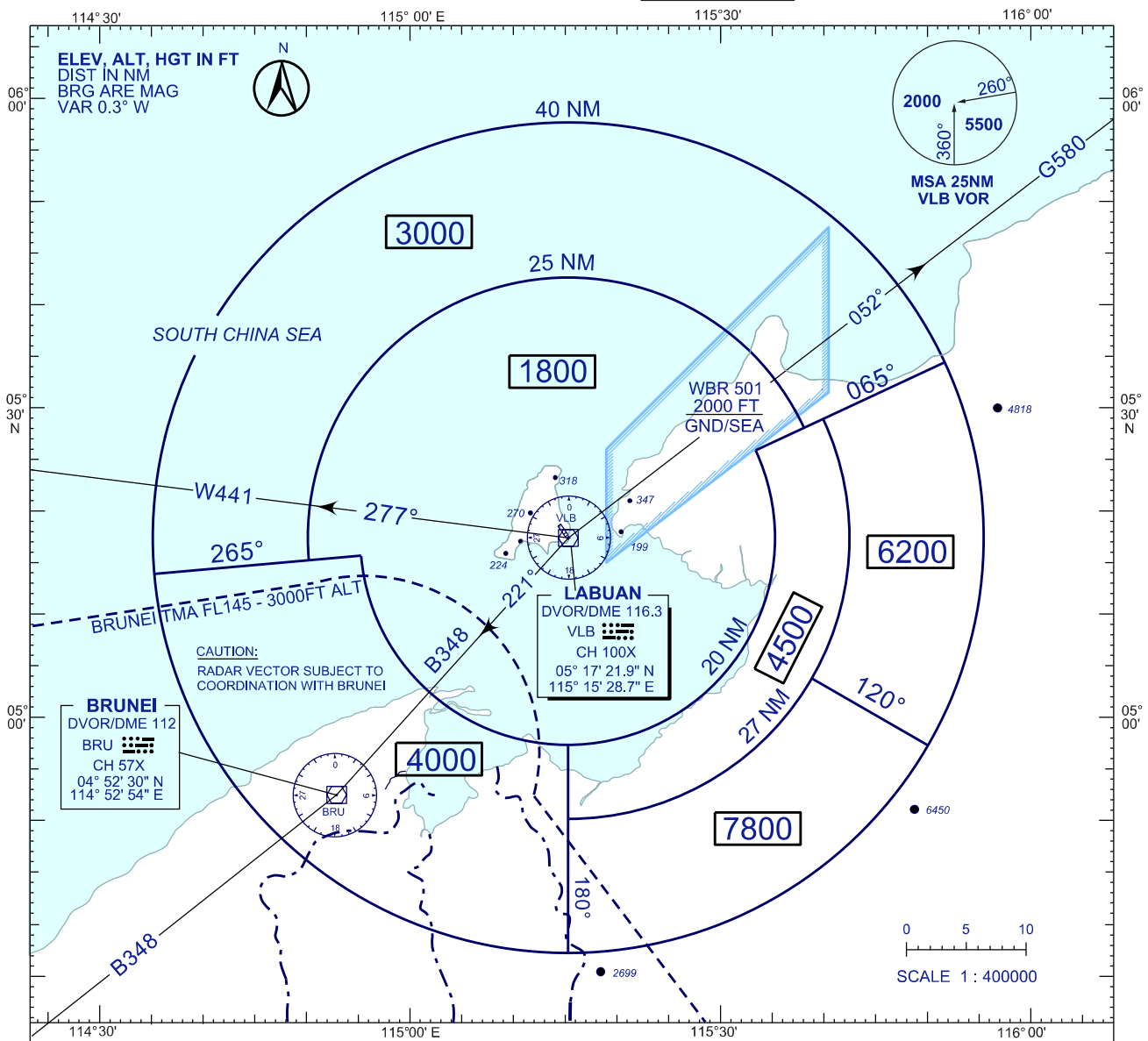


ATC SURVEILLANCE MINIMUM ALTITUDE CHART - ICAO

AERODROME ELEV 100 FT
TRANSITION ALT 11000

APP 119.7, 249.3
TWR 118.1, 238.1
SMC 118.35, 235.1
ATIS 126.85

LABUAN/LABUAN (WBKL)



LOSS OF RADIO COMMUNICATION PROCEDURES :

1. SET TRANSPONDER TO 7600
2. A) IN VMC
CONTINUE APPROACH VISUALLY FOR THE DUTY
RUNWAY AND LAND ; OR
b) IN IMC
MAINTAIN LAST ASSIGNED ALTITUDE ; OR CLIMB
TO MSA IF THE ASSIGNED ALTITUDE IS BELOW
MSA AND TRACK DIRECT TO VLB VOR
3. AT THE HOLDING FACILITY VLB, CARRY OUT
THE STANDARD RADIO COMMUNICATION
FAILURE PROCEDURE
4. MILITARY AIRCRAFT SHALL CARRY OUT STANDARD
RADIO COMMUNICATION FAILURE PROCEDURE
AS STATED IN THE LABUAN UOI

NOTE :

THE RVA COMPRISES AN AREA OF 40 NM RADIUS
OF VLB VOR/DME STATION. RADAR VECTORING
SHALL BE PROVIDED WITHIN LABUAN CTR AND
PART OF KOTA BHARU TMA

ALL BEARINGS ARE MAGNETIC AND TAKEN FROM
VLB. ONLY SIGNIFICANT OBSTRUCTIONS AND SPOT
HEIGHTS ARE SHOWN. THESE ARE BASED ON QNH.

ALTITUDES SHOWN PROVIDE 1000 FEET OF
CLEARANCE OVER ALL OBSTACLES WITHIN 3 NM
OF THE AREA BOUNDARY WHEN UP TO 20 NM

FROM THE RADAR ANTENNA, OR WITHIN 5 NM OF
THE BOUNDARY AT DISTANCE GREATER THAN
20 NM FROM ANTENNA.