

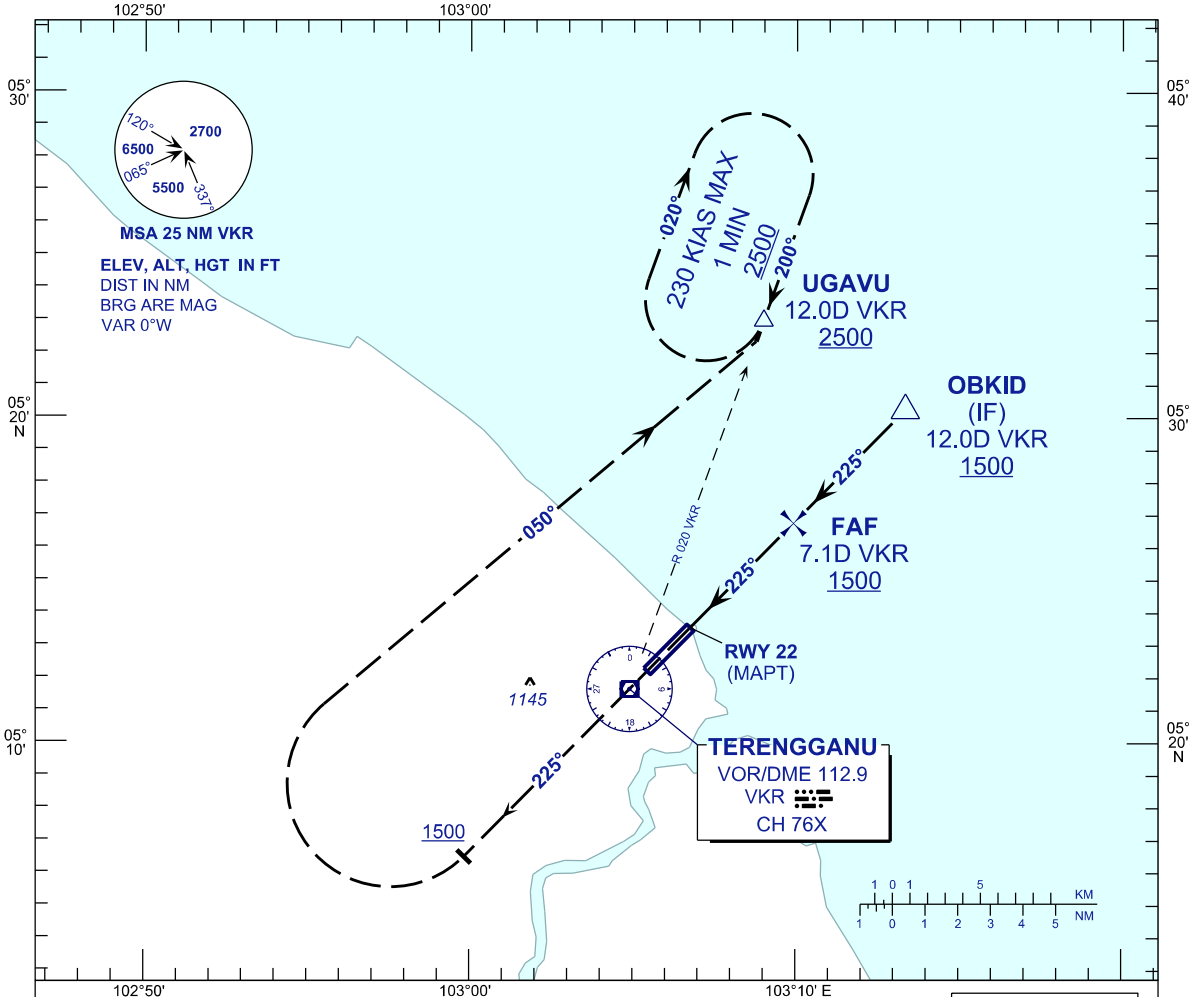
INSTRUMENT APPROACH CHART - ICAO

AERODROME ELEV 21 FT
HEIGHT RELATED TO
THR RWY 22 - ELEV 21 FT

APP	123.6
	235.32
	121.5
TWR	119.05
SMC	121.6
ATIS	126.65

**KUALA TERENGGANU/
SULTAN MAHMUD (WMKN)
RWY 22**

VOR Z



MISSED APPROACH

AT MAP: CLIMB TO 2500FT ON TR 225°
PASSING 1500 FT TURN RIGHT TO UGAVU
AND HOLD OR AS DIRECTED BY ATC

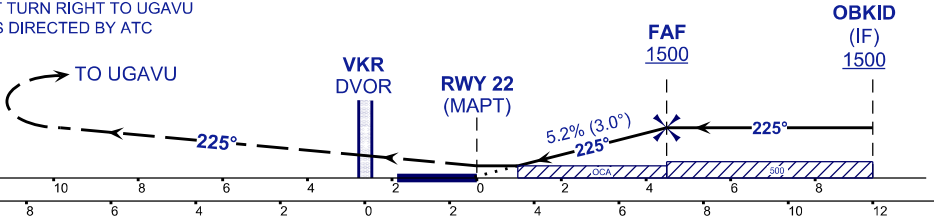
TRANSITION LEVEL FL130
TRANSITION ALT 11 000

RDH 50

THR ELEV 21

TO THR 22 (NM)

TO VKR (DME)



OCA / OCH	A	B	C	D
VOR/DME	380 / (359)			

DME VKR	NM	7.1	6.1	5.1	4.1	3.1
DIST THR/RWY22	NM	4.5	3.5	2.5	1.5	0.5
ALTITUDE	FT	1500	1185	867	548	230

GROUND SPEED (GS)	KT	80	100	120	140	160	180
FAF - RWY22 (4.5NM)	MIN:SEC	3:22	2:42	2:15	1:55	1:41	1:30
RATE OF DESCEND(318.5FT/NM)	FT/MIN	420	530	640	740	850	960

CHANGES : MISSED APPROACH DESCRIPTION.