

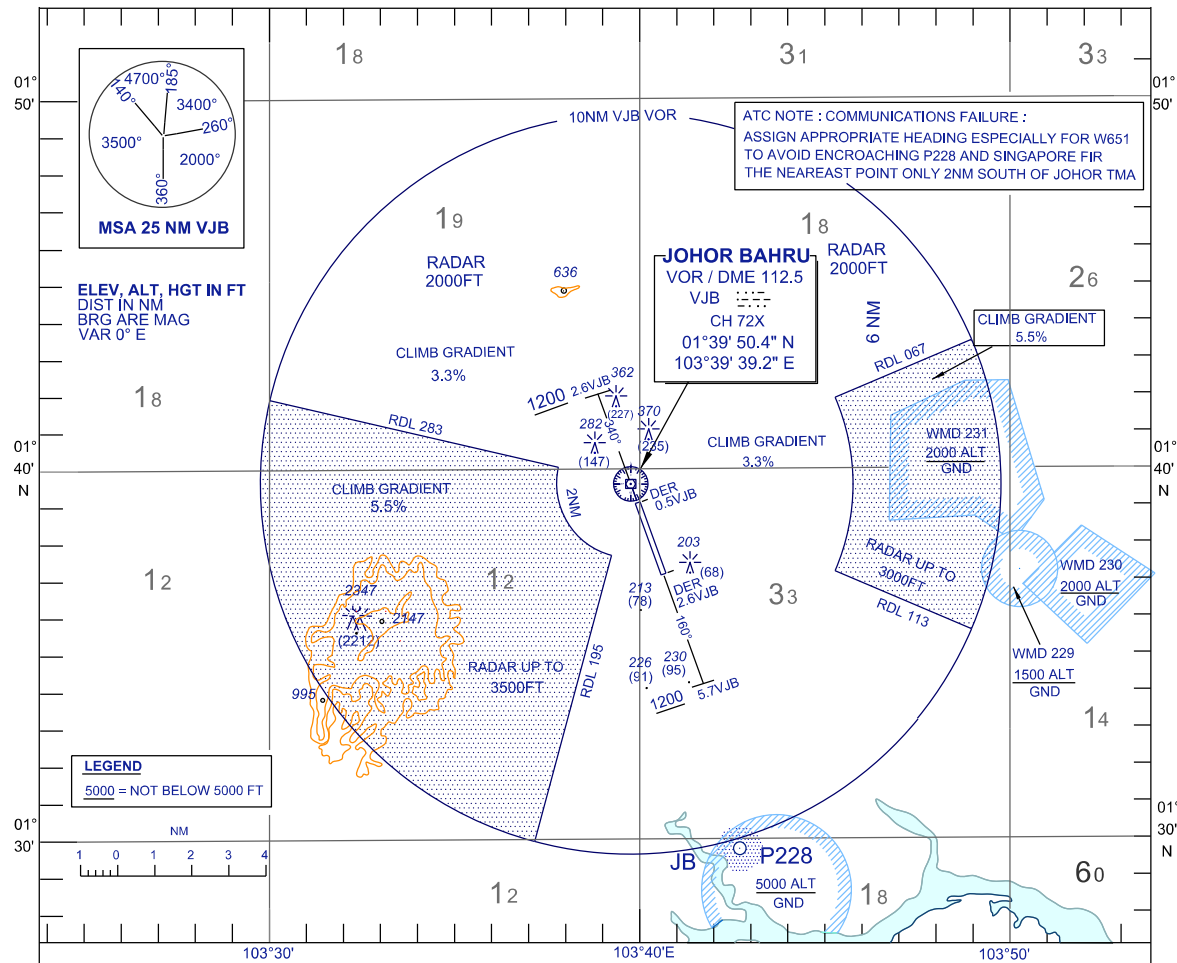
**STANDARD DEPARTURE CHART  
INSTRUMENT (SID) - ICAO**

TRANSITION ALTITUDE  
11000 FT

APP 124.70 (P)  
121.05 (S)  
TWR 118.15  
SMC 121.80  
ATIS 123.05

**JOHOR BAHRU/SENAI  
INTERNATIONAL AIRPORT (WMKJ)  
RWY 16/34**

**JOHOR RADAR TWO DEPARTURE**



**ATC NOTE : COMMUNICATIONS FAILURE :**  
ASSIGN APPROPRIATE HEADING ESPECIALLY FOR W651  
TO AVOID ENCROACHING P228 AND SINGAPORE FIR  
THE NEAREST POINT ONLY 2NM SOUTH OF JOHOR TMA

**JOHOR BAHRU**  
VOR / DME 112.5  
VJB  
CH 72X  
01°39' 50.4" N  
103°39' 39.2" E

**ELEV, ALT, HGT IN FT  
DIST IN NM  
BRG ARE MAG  
VAR 0° E**

**LEGEND**  
5000 = NOT BELOW 5000 FT

Scale: 1 0 1 2 3 4 NM

**JOHOR RADAR TWO DEPARTURE**

**RWY 16**

TRACK 160° UNTIL BEYOND DER (2.6 DME VJB)  
AT 5.7 DME VJB OR 1200 FT, WHICHEVER IS EARLIER,  
TURN TO ASSIGNED HEADING  
CONTACT APPROACH WHEN AIRBORNE  
ADVISE : DIRECTION OF TURN & ASSIGNED HEADING  
LEVEL PASSING TO NEAREST 100 FT  
ASSIGNED LEVEL  
MAX IAS 180 KT IN TURN (P228)

**RWY 34**

TRACK 340° UNTIL BEYOND DER (0.5 DME VJB)  
AT 2.6 DME VJB OR 1200 FT, WHICHEVER IS EARLIER,  
TURN TO ASSIGNED HEADING  
CONTACT APPROACH WHEN AIRBORNE  
ADVISE : DIRECTION OF TURN & ASSIGNED HEADING  
LEVEL PASSING TO NEAREST 100 FT  
ASSIGNED LEVEL

**RATE OF CLIMB IN FT / MIN**

GROUND SPEED(KT)	120	130	140	150	160	170	180	190	200	220	240	260	280	300	
GRADIENT	3.3%	401	434	468	502	535	569	602	635	669	736	803	869	936	1003
	4.4%	535	579	624	668	713	757	802	846	891	980	1069	1158	1248	1337
	5.5%	668	724	780	835	891	947	1002	1058	1114	1225	1337	1448	1560	1671

**CLIMB GRADIENT :**

MINIMUM CLIMB GRADIENT 3.3% UNLESS OTHERWISE SPECIFIED USE 5.5% CLIMB GRADIENT FROM LIFT-OFF IF ASSIGNED HEADING WILL TAKE AIRCRAFT INTO HATCHED SECTORS.

**CAUTION :**

ASSIGNED HEADING (AND LEVEL IF APPLICABLE) WILL BE ISSUED WITH TAKE-OFF CLEARANCE

**COMMUNICATIONS FAILURE :**

- IMMEDIATELY SQUAWK 7600
- MAINTAIN ASSIGNED HEADING - CLIMB TO MSA OR LAST ASSIGNED LEVEL IF HIGHER
- MAINTAIN MSA OR, AS APPLICABLE FOR 2 MINUTES
- THEN CLIMB TO PLANNED FLIGHT LEVEL AND INTERCEPT FLIGHT PLANNED TRACK (AS AMENDED BY ATC, IF APPLICABLE)