

**STANDARD ARRIVAL CHART
INSTRUMENT (STAR) - ICAO**

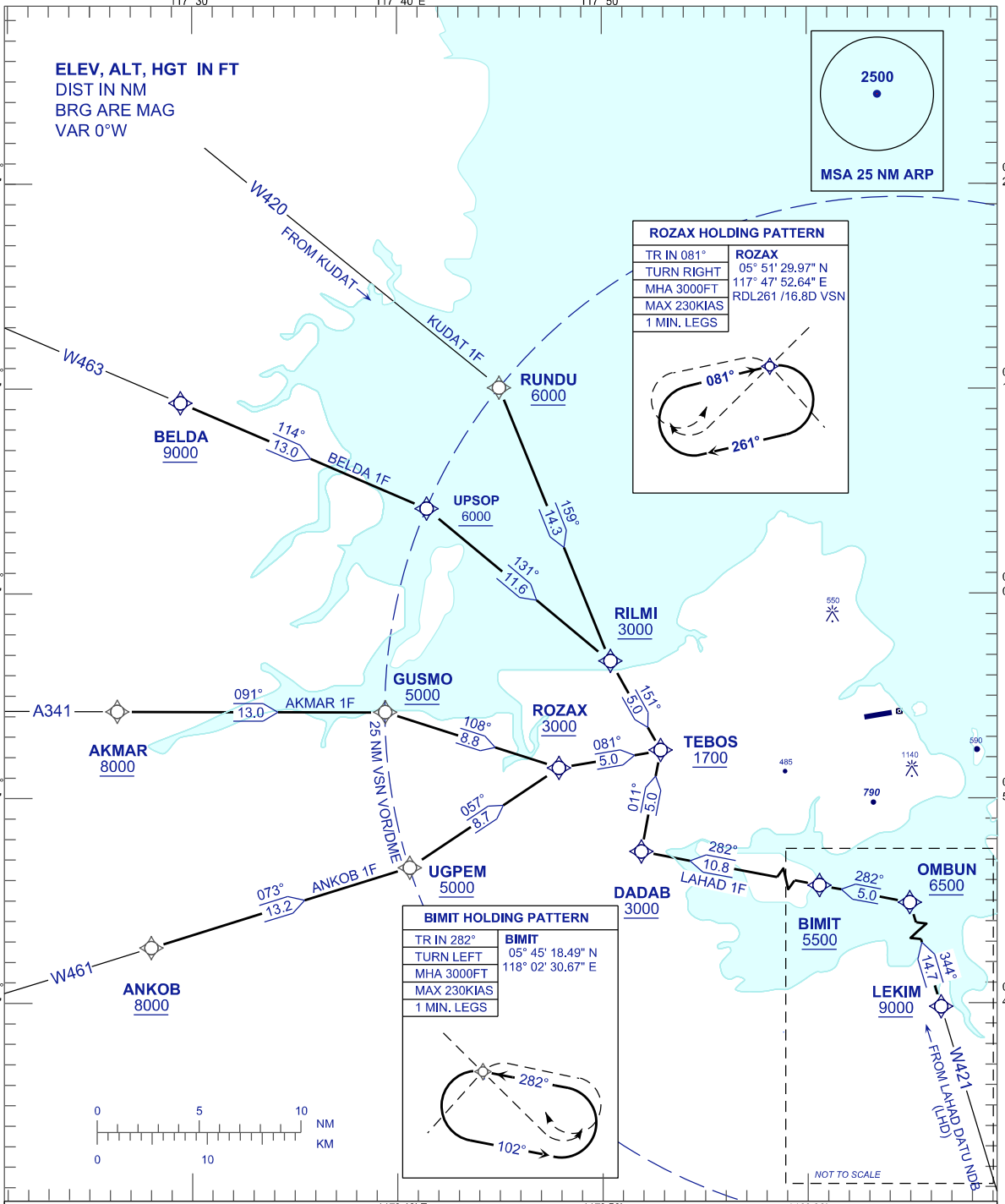
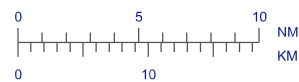
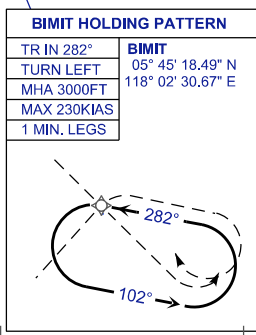
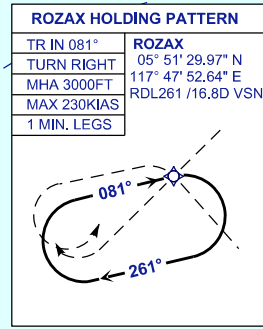
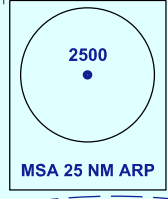
TRANSITION ALTITUDE
11000FT

APP 123.20
TWR 122.05
SMC 121.90
ATIS 128.20

**SANDAKAN/SANDAKAN (WBKS)
RNAV RWY 08**

KUDAT 1F
AKMAR 1F
BELDA 1F
ANKOB 1F
LAHAD 1F

ELEV, ALT, HGT IN FT
DIST IN NM
BRG ARE MAG
VAR 0°W



COMMUNICATION FAILURE:

- SET TRANSPONDER TO MODE A/C CODE 7600.
- IF UNDER PILOT NAVIGATION, MAINTAIN ASSIGNED LEVEL FOR 3 MINUTES. IF NO ONWARD CLEARANCE IS RECEIVED, SUBSEQUENTLY CLIMB/DESCED TO COMPLY WITH STAR AND LAND.
- IF UNDER RADAR VECTORED, MAINTAIN VECTOR FOR 1 MINUTES, IF BELOW MSA CLIMB TO MSA, THEN TRACK TO INTERCEPT CLEARED OR PREVIOUSLY ASSIGNED STAR AND LAND.

CHANGES : BASE TURN SPEED IAS 230KT TO MAX 230KIAS,
LAHAD DATU 1F TO LAHAD 1F.