

INSTRUMENT APPROACH CHART - ICAO

AERODROME ELEV 59 FT
 HEIGHTS RELATED TO
 THR RWY 02 - ELEV 59 FT

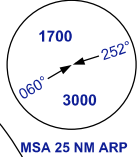
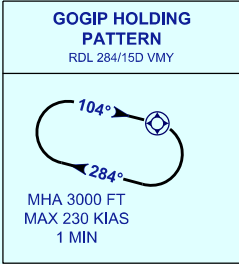
APP 129.9(P)
 122.7(S)
 TWR 123.3
 SMC 121.9
 CATIS 127.0

MIRI/MIRI (WBGR)

RNP Y RWY 02

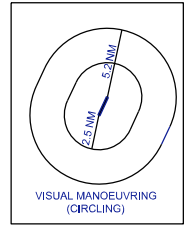
113° 00' 113° 50' 114° 00' E 114° 10'

ELEV, ALT, HGT IN FT
 DIST IN NM
 BRG ARE MAG
 VAR 0° W



SOUTH CHINA SEA

NOTE:
 -APPROACH NOT AUTHORIZED WHEN AIRPORT TEMPERATURE BELOW 19°C OR ABOVE 38°C
 -WBGR ALTIMETER SETTING REQUIRED
 -GNSS REQUIRED



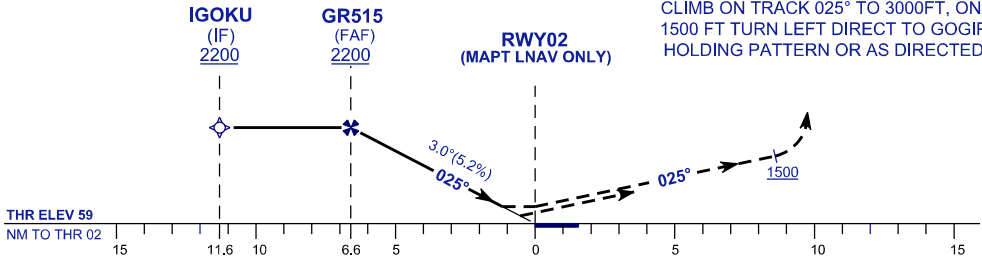
TRANSITION LEVEL FL 130
 TRANSITION ALT 11 000

113° 50' 114° 00' E 114° 10'

VPA 3.0°
 TCH 50FT

MISSED APPROACH

CLIMB ON TRACK 025° TO 3000FT, ON PASSING 1500 FT TURN LEFT DIRECT TO GOGIP HOLDING PATTERN OR AS DIRECTED BY ATC



OCA (OCH)				
ACFT CATEGORY	A	B	C	D
LNAV	490 (431)			
LNAV / VNAV	348 (289)			
CIRCLING	950 (891)		1800 (1741)	

DISTANCE TO THR	6.6	6	5	4	3	2	1.6
ALTITUDE	2200(2141)	2010(1951)	1690(1631)	1380(1321)	1060(1001)	750(681)	600(541)

CHANGES: CHART IDENTIFICATION
 AT PROFILE VIEW, ADD VPA, TCH AND MAPT INFORMATION