

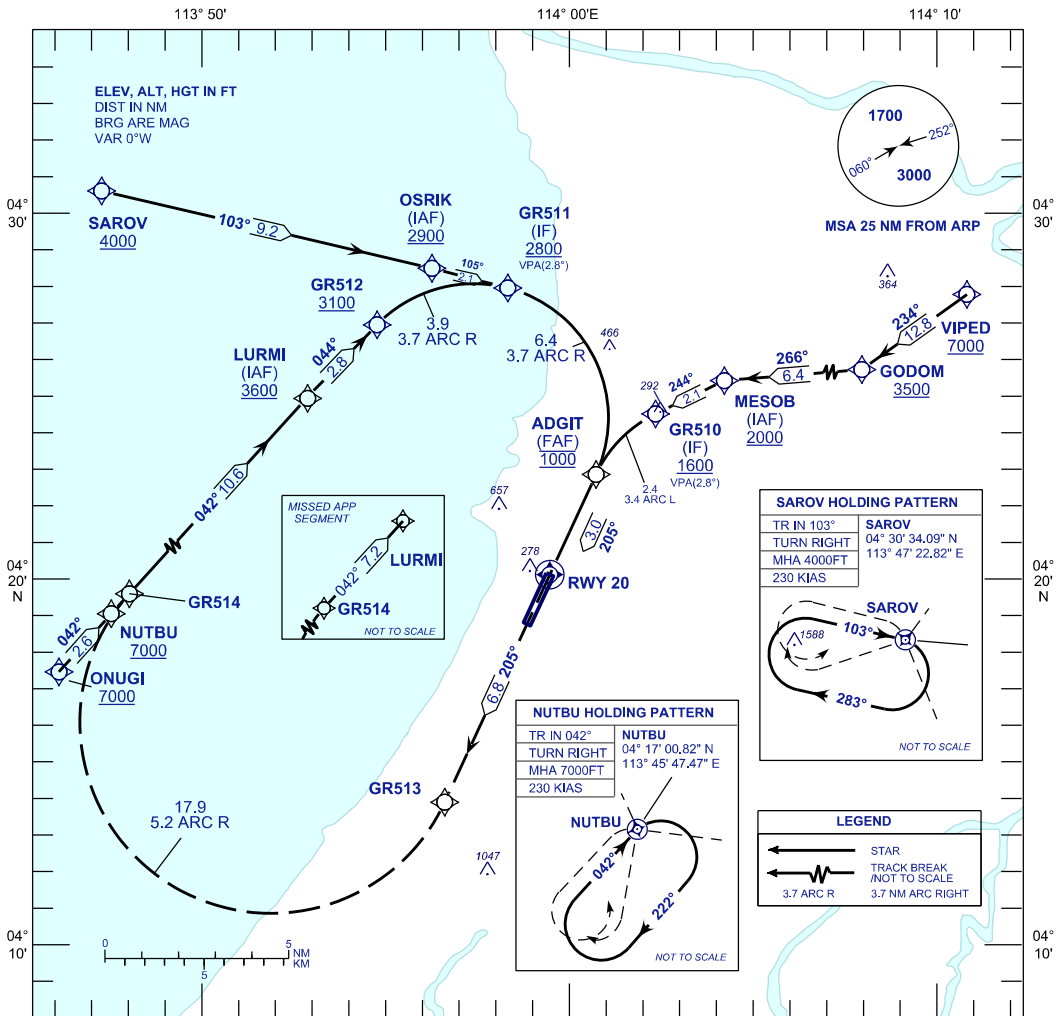
**INSTRUMENT
APPROACH
CHART - ICAO**

AERODROME ELEV 59 FT
HEIGHT RELATED TO
THR RWY 20 - ELEV 59 FT

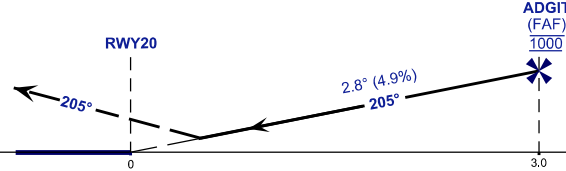
APP	129.9 (P)
	122.70 (S)
TWR	123.30
SMC	121.9
CATIS	127.0

MIRI/MIRI (WBGR)

RNP Z RWY 20 (AR)



VPA 2.8° RDH 50FT
MISSED APPROACH
 CLIMB TO 3600FT VIA THE RNP MISSED APPROACH TRACK TO LURMI OR AS DIRECTED BY ATC
 TRANSITION LEVEL FL130
 TRANSITION ALT 11 000



STRAIGHT - IN APPROACH	OCA (OCH)		GROUND SPEED - KT					
CATEGORY OF AIRCRAFT	C	D	70	90	100	120	140	160
RNP 0.3	490 (431)		RATE OF DESCENT (2.8°) (FEET/MIN)					
CIRCLING AND ALTERNATE	N/A		347	446	495	594	693	792
			DISTANCE TO THRESHOLD (NM)		3	2	1	
			ALTITUDE (FEET)		1000	670	370	

- 1. AUTHORIZATION REQUIRED
- 2. GNSS REQUIRED
- 3. RF REQUIRED
- 4. APPROACH NOT AUTHORIZED WHEN AIRPORT TEMPERATURE BELOW 19°C OR ABOVE 38°C.
- 5. WBGR ALTIMETER SETTING REQUIRED.
- 6. PAPI AND VERTICAL PATH ANGLE NOT COINCIDENT.
- 7. RNP 2.0 REQUIRED FOR ARRIVAL HOLD AT SAROV.
- 8. RNP 1.0 REQUIRED FROM ONUGI TO LURMI
- 9. RNP 0.3 REQUIRED FROM IAF'S TO FAF.