

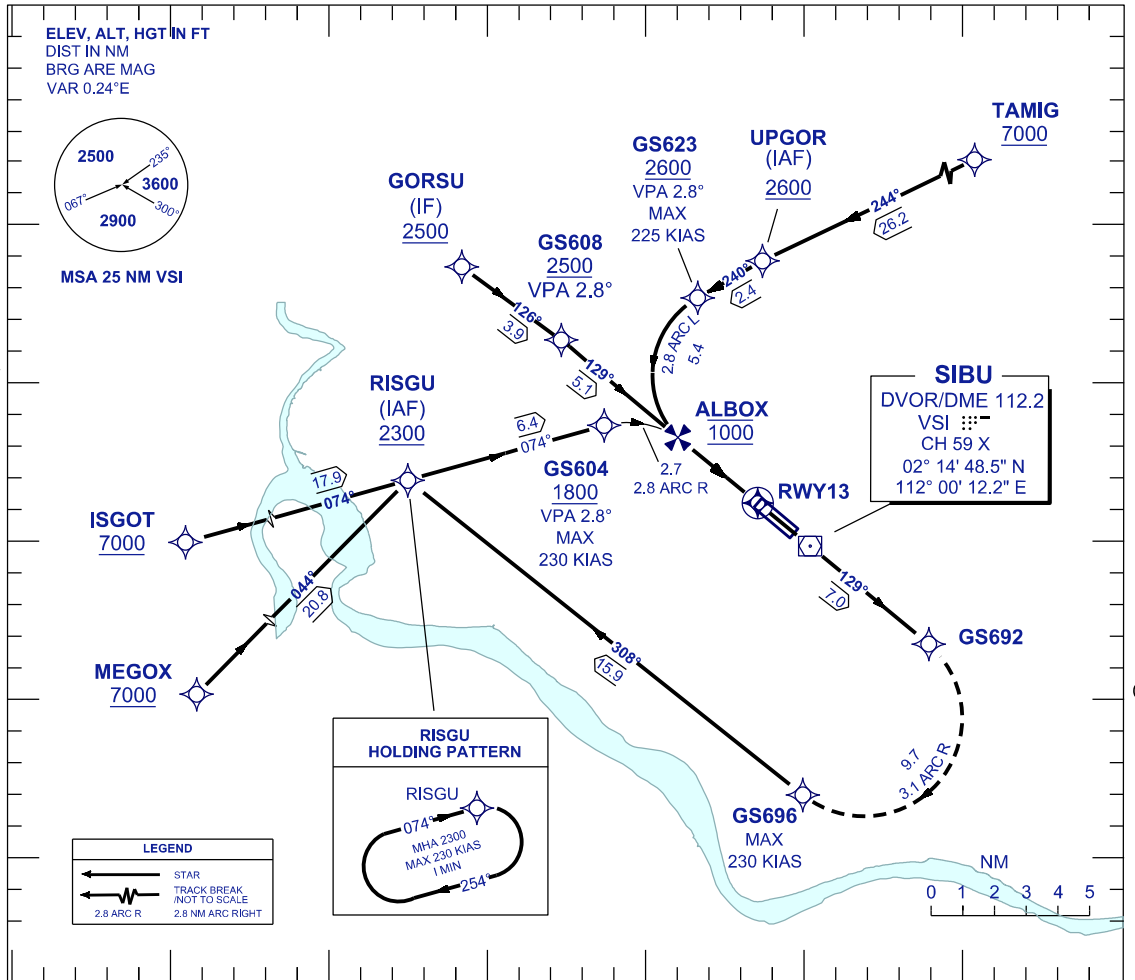
**INSTRUMENT
APPROACH
CHART - ICAO**

**AERODROME ELEV 121 FT
HEIGHT RELATED TO
THR RWY 13 - ELEV 81 FT**

APP	122.6(P), 124.4 (S)
TWR	123.2
SMC	121.9
ATIS	127.65
EMERG	121.5

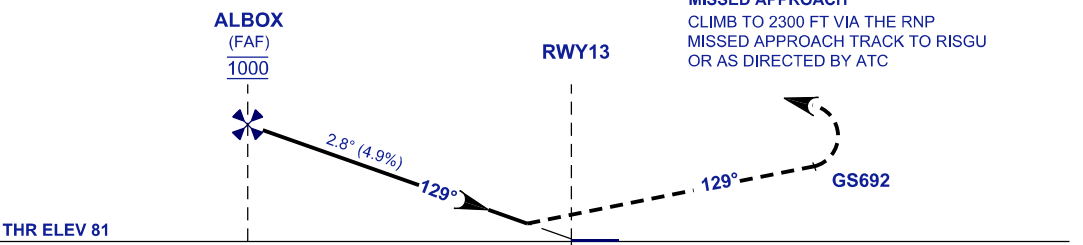
SIBU /SIBU (WBGS)

RNP Z RWY 13 (AR)



TRANSITION LEVEL FL 130
TRANSITION ALT 11000

VPA 2.8°
RDH 51FT



THR ELEV 81
NM TO THR 13

OCA/H	
ACFT CAT.	C D
RNP 0.3	572 (491)

GROUND SPEED - KT	70	90	100	120	140	160
RATE OF DESCENT(2.8°) (FT/MIN)	347	446	495	594	693	792

DISTANCE TO THRESHOLD (NM)	2.9	2	1
ALTITUDE (FT)	1000	670	370

- 1. AUTHORIZATION REQUIRED**
- 2. GNSS REQUIRED**
- 3. RF REQUIRED**
- 4. WBGS ALTIMETER SETTING REQUIRED.
- 5. PAPI AND VERTICAL PATH ANGLE NOT COINCIDENT
- 6. RNP 0.3 REQUIRED FROM IAF'S/IF TO RWY
- 7. APPROACH NOT AUTHORIZED WHEN AIRPORT TEMPERATURE BELOW 20°C OR ABOVE 36°C

CHANGES : CHART IDENTIFICATION, ADD LEGEND TABLE & ADD VERTICAL PATH ANGLE.