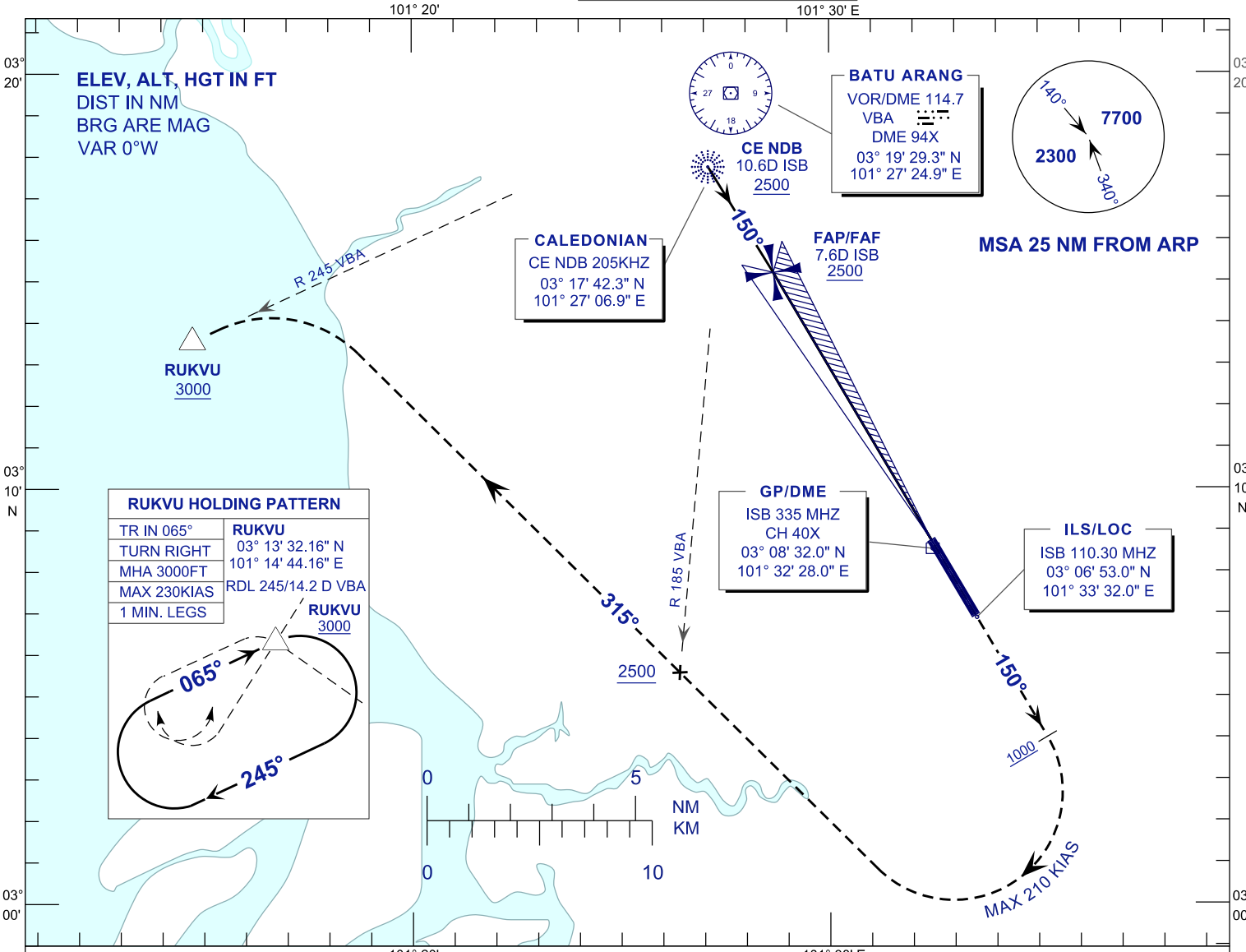


**INSTRUMENT  
APPROACH  
CHART - ICAO**

**AERODROME ELEV 89FT**  
HEIGHT RELATED TO  
THR RWY 15 - ELEV 71FT

|     |        |      |        |
|-----|--------|------|--------|
| APP | 118.65 | ACD  | 120.45 |
|     | 124.20 | SMC  | 121.90 |
|     | 135.25 | TWR  | 118.20 |
| FIS | 126.10 | ATIS | 127.60 |

**SUBANG/SULTAN ABDUL  
AZIZ SHAH (WMSA)  
ILS OR LOC RWY 15**



**MISSED APPROACH:**  
CLIMB TO 3000FT OR ABOVE ON TR 150°, ON PASSING 1000FT TURN RIGHT TR 315° TO INTERCEPT RADIAL 245° VBA VOR/DME TO RUKVU AND HOLD, OR AS DIRECTED BY ATC.

**CAUTION:**  
MISSED APPROACH TURN SPEED MAXIMUM 210KIAS, TO CROSS RADIAL 185° VBA VOR/DME AT 2500FT OR ABOVE.

|                                 |      |      |      |      |      |      |     |     |
|---------------------------------|------|------|------|------|------|------|-----|-----|
| DME ISB (NM)                    | 7.6  | 6.6  | 5.6  | 4.6  | 3.6  | 2.6  | 1.6 | 0.6 |
| DIST THR RWY15 (NM)             | 7.5  | 6.5  | 5.5  | 4.5  | 3.5  | 2.5  | 1.5 | 0.5 |
| ALTITUDE (FT)                   | 2500 | 2182 | 1863 | 1545 | 1226 | 908  | 589 | 270 |
| GROUND SPEED (KT)               | 80   | 100  | 120  | 140  | 160  | 180  |     |     |
| FAF - RWY15 (7.5NM) (MIN:SEC)   | 5:36 | 4:29 | 3:44 | 3:12 | 2:48 | 2:29 |     |     |
| RATE OF DESCEND (5.2%) (FT/MIN) | 420  | 530  | 640  | 740  | 850  | 960  |     |     |

|                      |          |   |   |   |
|----------------------|----------|---|---|---|
| OCA (OCH)            | A        | B | C | D |
| STRAIGHT IN APPROACH | 350(279) |   |   |   |