

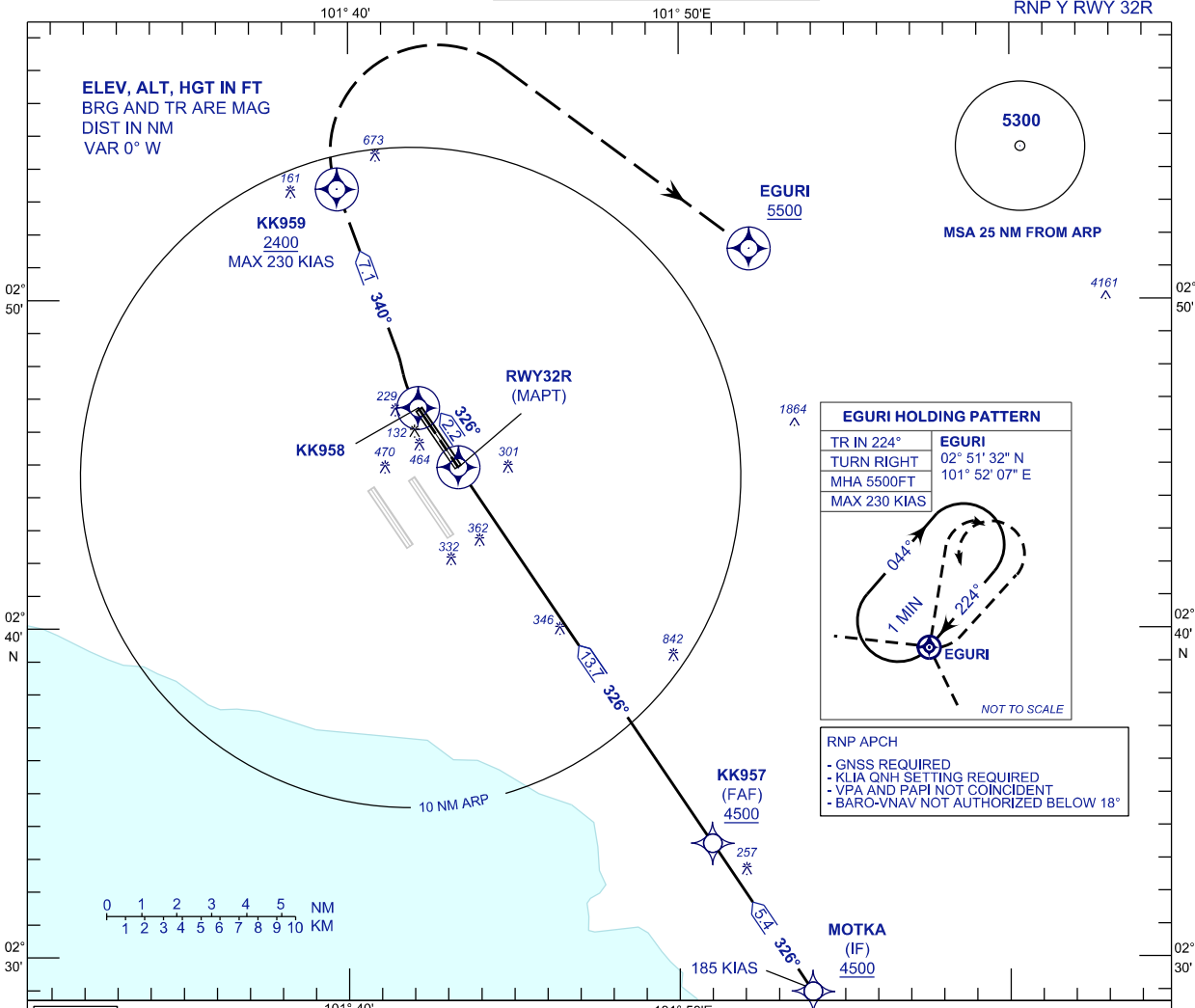
**INSTRUMENT
APPROACH
CHART - ICAO**

AERODROME ELEV 69 FT
HEIGHT RELATED TO
THR RWY 32R - ELEV 69 FT

APP 121.25 120.35 135.75	TWR 118.80	SMC 121.65	ATIS 128.05
-----------------------------------	---------------	---------------	----------------

**SEPANG/KL INTERNATIONAL
AIRPORT (WMKK)**

RNP Y RWY 32R



EGURI HOLDING PATTERN

TR IN 224°	EGURI
TURN RIGHT	02° 51' 32" N
MHA 5500FT	101° 52' 07" E
MAX 230 KIAS	

NOT TO SCALE

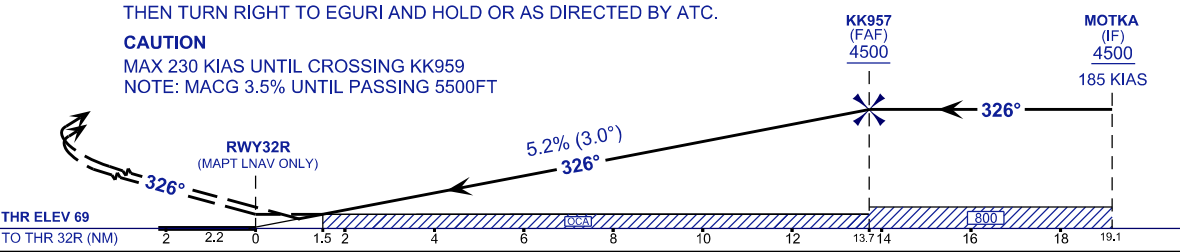
- RNP APCH
- GNSS REQUIRED
 - KLIA QNH SETTING REQUIRED
 - VPA AND PAPI NOT COINCIDENT
 - BARO-VNAV NOT AUTHORIZED BELOW 18°

VPA 3.0°
TCH 56FT

MISSED APPROACH
AT MAPT TR326 TO KK958 CLIMB TO 5500FT. AT KK958 TURN RIGHT TO KK959 THEN TURN RIGHT TO EGURI AND HOLD OR AS DIRECTED BY ATC.

TRANSITION LEVEL FL130
TRANSITION ALT 11 000

CAUTION
MAX 230 KIAS UNTIL CROSSING KK959
NOTE: MACG 3.5% UNTIL PASSING 5500FT



STRAIGHT-IN APPROACH		OCA (OCH)				GROUND SPEED (GS)		KNOTS		80	100	120	140	160	180
CATEGORY OF AIRCRAFT		A	B	C	D	FAF - RWY32R (13.7 NM)		MIN:SEC	10:19	8:15	6:53	5:54	5:10	4:35	
LNAV / VNAV	3.5% MACG	430 (361)				RATE OF DESCENT (318.5 FT/NM)		FT/MIN	420	530	630	740	840	950	
	2.5% MACG	1210 (1141)				DIST THR / RWY32R	NM	13.7	12.7	11.7	10.7	9.7	8.7	7.7	6.7
LNAV	3.5% MACG	600 (531)				ALTITUDE	FT	4500	4183	3865	3546	3228	2910	2591	2273
	2.5% MACG	1590 (1521)				DIST THR / RWY32R	NM	5.7	4.7	3.7	2.7	1.7	0.7		
		ALTITUDE		FT		1954	1636	1317	999	680	362				

① MACG - MISSED APPROACH CLIMB GRADIENT
IF UNABLE TO MAINTAIN A 3.5% MACG, USE LNAV OR LNAV / VNAV 2.5% OCA