

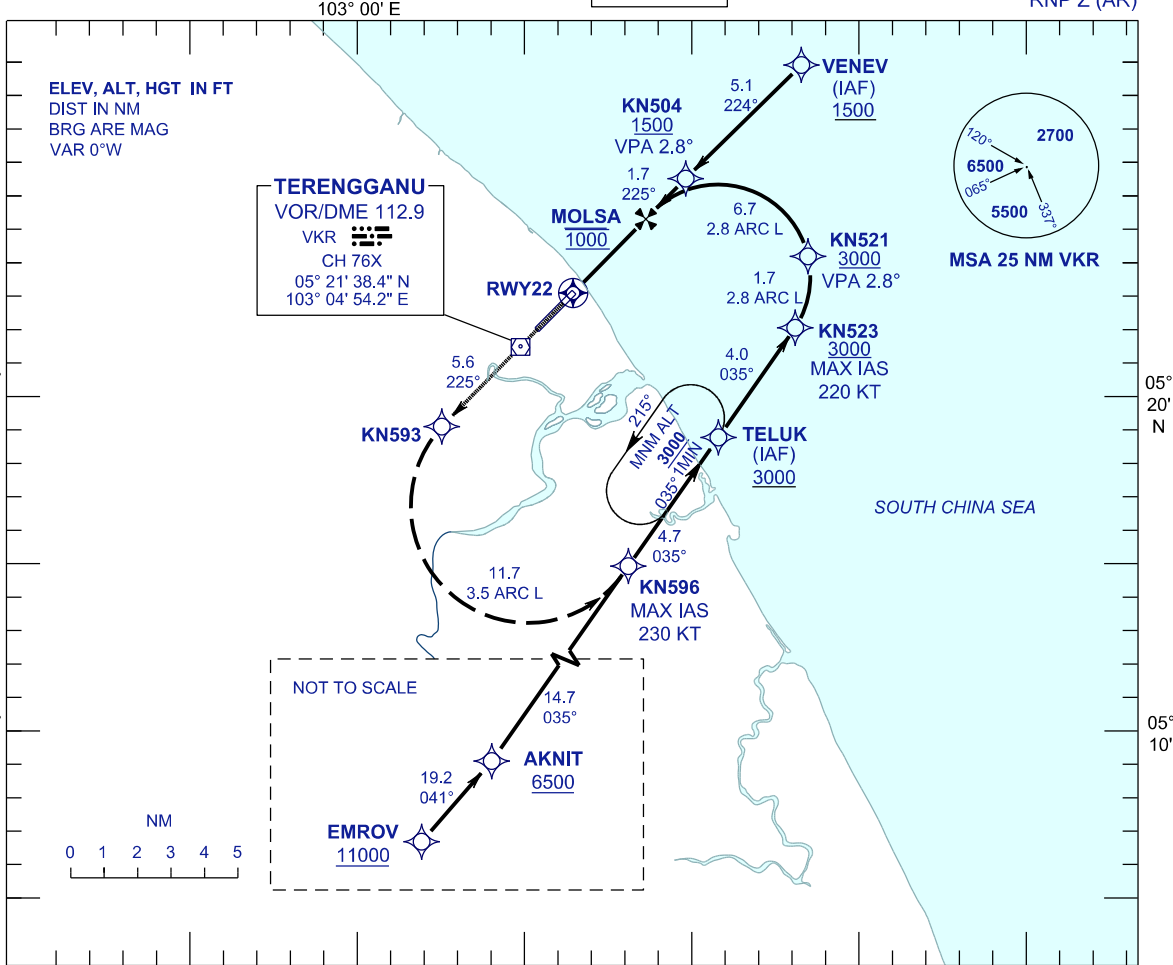
**INSTRUMENT
APPROACH
CHART - ICAO**

AERODROME ELEV 21 FT
HEIGHT RELATED TO
THR RWY 22 - ELEV 21 FT

APP	123.6
	235.32
	121.5
ATIS	126.65
TWR	119.05
SMC	121.60

**KUALA TERENGGANU/
SULTAN MAHMUD (WMKN)
RWY22**

RNP Z (AR)



MISSED APPROACH

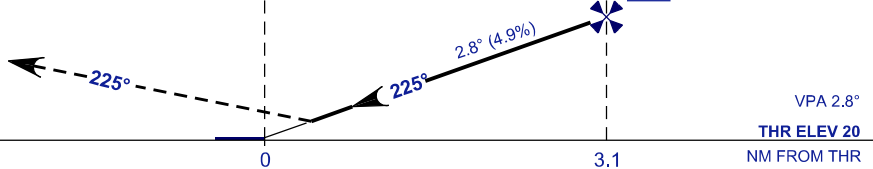
CLIMB TO 3000 VIA THE RNAV (RNP)
MISSED APPROACH TRACK TO TELUK
OR AS DIRECTED BY ATC

TRANSITION LEVEL FL 130
TRANSITION ALT 11000

RWY22

**MOLSA
FAF**

1000



RDH 50 FT

VPA 2.8°

THR ELEV 20
NM FROM THR

OCA/H		
ACFT CAT.	C	D
RNP 0.3	466 (445) 2.1KM	

GROUND SPEED - KT	70	90	100	120	140	160
RATE OF DESCENT (2.8°) (FT/MIN)	347	446	495	594	693	792

DISTANCE TO THRESHOLD (NM)	3.1	2	1
ALTITUDE (FT)	1000	670	370

- AUTHORIZATION REQUIRED**
- GNSS REQUIRED**
- RF REQUIRED**
- APPROACH NOT AUTHORIZED WHEN AIRPORT TEMPERATURE BELOW 20°C OR ABOVE 34°C
- WMKN ALTIMETER SETTING REQUIRED.
- PAPI AND VERTICAL PATH ANGLE NOT COINCIDENT
- PROCEDURE REQUIRES RNP 1.0 IN FEEDER SEGMENTS
- PROCEDURE REQUIRES RNP 0.3 FROM IAF TO RWY
- VSS DOES NOT TAKE INTO ACCOUNT TRANSIENT OBJECTS.

CHANGES : THR ELEV 20 FT TO 21 FT.