

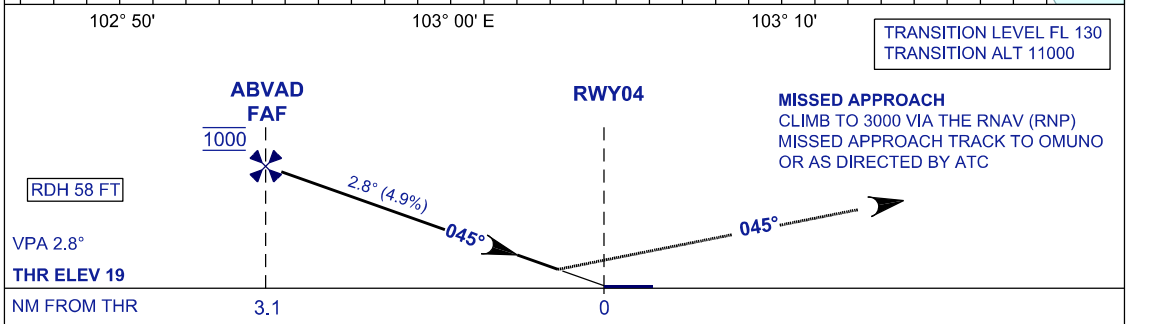
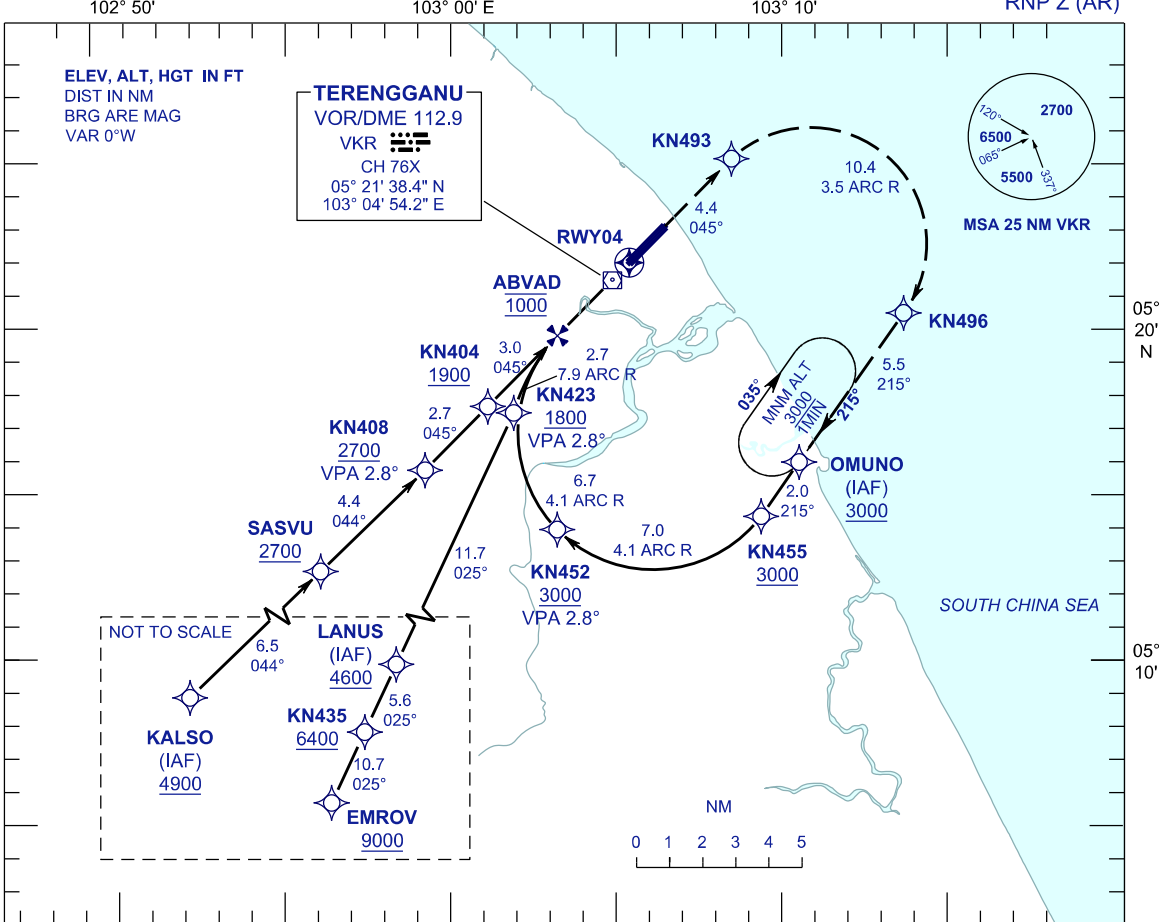
**INSTRUMENT
APPROACH
CHART - ICAO**

AERODROME ELEV 21 FT
HEIGHT RELATED TO
THR RWY 04 - ELEV 20 FT

APP	123.6
	235.32
ATIS	121.5
TWR	126.65
SMC	119.05
	121.60

**KUALA TERENGGANU/
SULTAN MAHMUD (WMKN)
RWY 04**

RNP Z (AR)



OCA/H		GROUND SPEED - KT						
ACFT CAT.	C	D	70	90	100	120	140	160
RNP 0.3	459 (439) 1.5KM		RATE OF DESCENT (2.8°) (FT/MIN)					
			347	446	495	594	693	792
			DISTANCE TO THRESHOLD (NM)		3.1	2	1	
			ALTITUDE (FT)		1000	670	370	

- AUTHORIZATION REQUIRED**
- GNSS REQUIRED**
- RF REQUIRED**
- APPROACH NOT AUTHORIZED WHEN AIRPORT TEMPERATURE BELOW 20°C OR ABOVE 34°C
- WMKN ALTIMETER SETTING REQUIRED.
- PAPI AND VERTICAL PATH ANGLE NOT COINCIDENT
- PROCEDURE REQUIRES RNP 1.0 IN FEEDER SEGMENTS
- PROCEDURE REQUIRES RNP 0.3 FROM IAF TO RWY

CHANGES : ADD MAGNETIC TRACK FOR HOLDING WPT OMUNO, THR ELEV 19FT TO 20FT .