

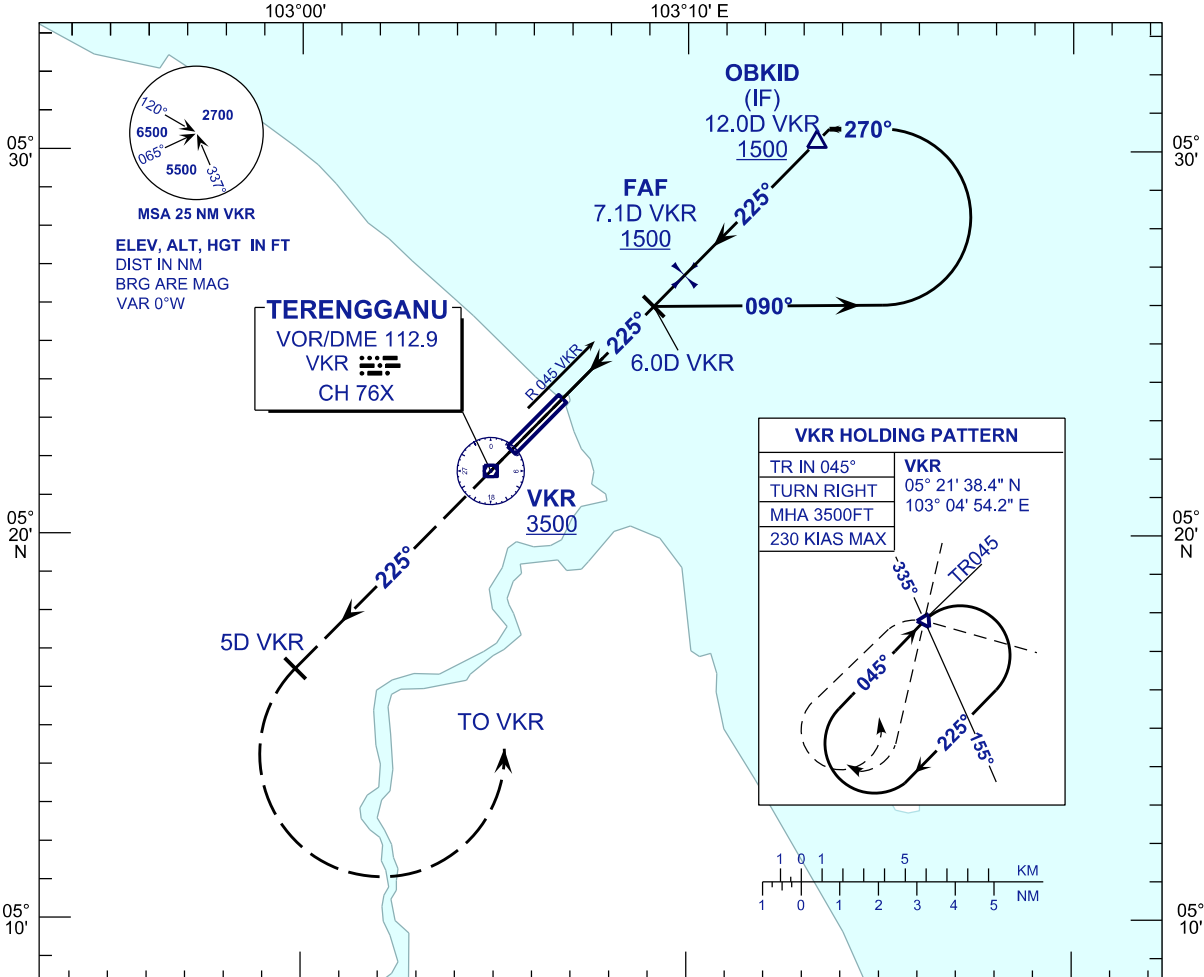
INSTRUMENT APPROACH CHART - ICAO

AERODROME ELEV 21 FT
HEIGHT RELATED TO
THR RWY 22 - ELEV 21 FT

APP	123.6
	235.32
	121.5
TWR	119.05
SMC	121.6
ATIS	126.65

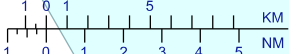
**KUALA TERENGGANU/
SULTAN MAHMUD (WMKN)
RWY 22**

VOR Y



VKR HOLDING PATTERN

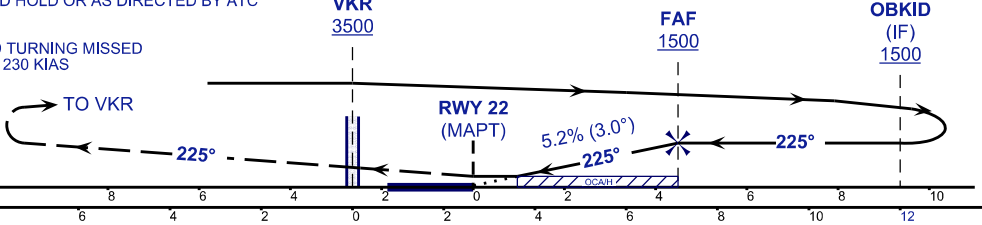
TR IN 045°	VKR
TURN RIGHT	05° 21' 38.4" N
MHA 3500FT	103° 04' 54.2" E
230 KIAS MAX	



MISSED APPROACH
AT MAPT CLIMB TO 3500FT ON TR 225°
PASSING 5 DME VKR TURN LEFT
TO VKR AND HOLD OR AS DIRECTED BY ATC

TRANSITION LEVEL FL130
TRANSITION ALT 11 000

CAUTION
MAX SPEED TURNING MISSED
APPROACH 230 KIAS



THR ELEV 21
TO THR 22 (NM)
TO VKR (DME)

OCA / OCH	A	B	C	D
VOR/DME	380 / (359)			

DME VKR	NM	7.1	6.1	5.1	4.1	3.1
DIST THR/RWY22	NM	4.5	3.5	2.5	1.5	0.5
ALTITUDE	FT	1500	1185	867	548	230

GS	KT	80	100	120	140	160	180
FAF - RWY22 (4.5NM)	MIN:SEC	3:22	2:42	2:15	1:55	1:41	1:30
RATE OF DESCEND(318.5FT/NM)	FT/MIN	420	530	640	740	850	960

CHANGES : ALTITUDE +1500 AT MISSED APPROACH PATH TO 5D VKR &
AT PROFILE VIEW AMEND MISSED APPROACH DESCRIPTION.