

# INSTRUMENT APPROACH CHART - ICAO

**AERODROME ELEV 59 FT**  
 HEIGHTS RELATED TO  
 THR RWY 20 - ELEV 59 FT

APP 129.9(P)  
 122.7(S)  
 TWR 123.3  
 SMC 121.9  
 CATIS 127.0

**MIRI/MIRI (WBGR)**  
**RWY 20**

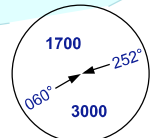
113° 50'

114° 10' E

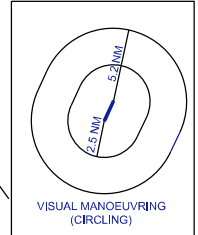
VOR Z

**ELEV, ALT, HGT IN FT**  
 DIST IN NM  
 BRG ARE MAG  
 VAR 0° W

VOR/DME VMY REQUIRED



MSA 25 NM VMY

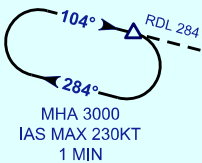


VISUAL MANOEUVRING (CIRCLING)

SOUTH CHINA SEA

BRUNEI TMA

**GOGIP HOLDING PATTERN**  
 (RDL 284/15D VMY)



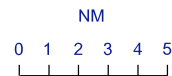
MHA 3000  
 IAS MAX 230KT  
 1 MIN

**IF IDUKA**  
 12D VMY  
 1800

**FAF**  
 7.3D VMY  
 1800

**MAPT**  
 3.9D VMY

**MIRI**  
 DVOR/DME 113.60  
 VMY   
 CH 83X



113° 50'

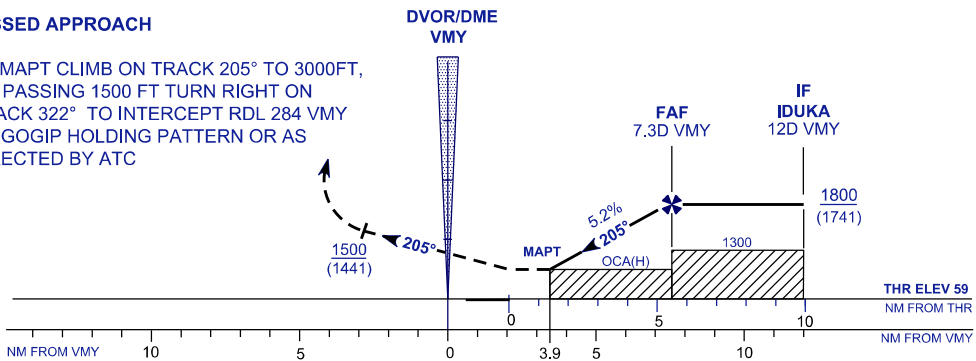
114° 00' E

114° 10'

TRANSITION LEVEL FL 130  
 TRANSITION ALT 11 000

## MISSED APPROACH

AT MAPT CLIMB ON TRACK 205° TO 3000FT, ON PASSING 1500 FT TURN RIGHT ON TRACK 322° TO INTERCEPT RDL 284 VMY TO GOGIP HOLDING PATTERN OR AS DIRECTED BY ATC



## OCA (H) FT

| ACFT CATEGORY         | A                   | B           | C           | D         |
|-----------------------|---------------------|-------------|-------------|-----------|
| VOR/DME (STRAIGHT-IN) | 650 (591) / 3.9 VMY |             |             |           |
| CIRCLING              | 950 (891)           |             | 1800 (1741) |           |
| DME DISTANCE (VMY)    | 7.3                 | 6           | 5           | 4         |
| ALTITUDE (FT)         | 1800 (1741)         | 1372 (1313) | 1053 (994)  | 735 (676) |

CHANGES : OBSTACLE HEIGHT