

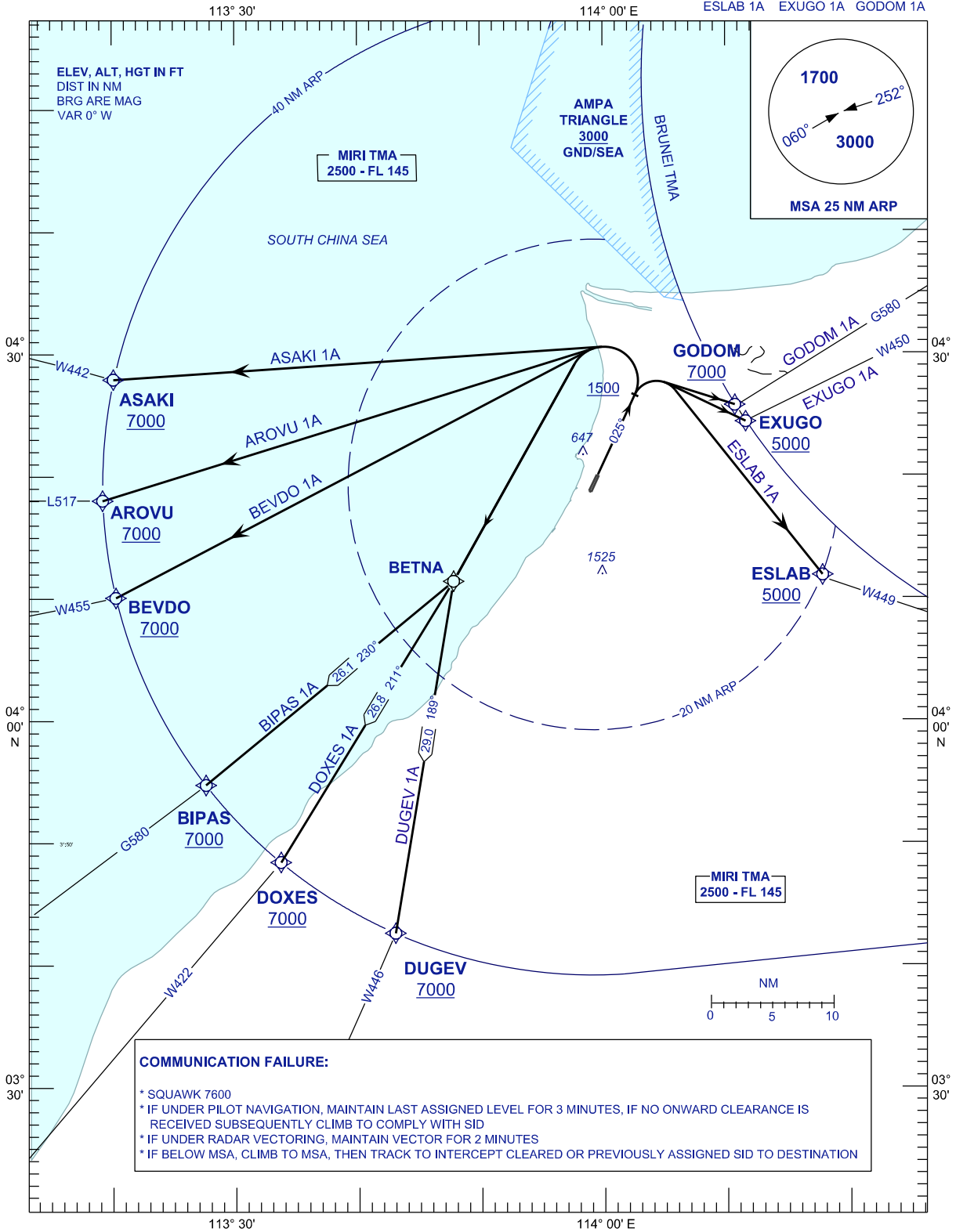
**STANDARD DEPARTURE CHART
INSTRUMENT (SID) - ICAO**

TRANSITION ALTITUDE
11 000 FT

APP	129.9 (P)
	122.7 (S)
TWR	123.3
SMC	121.9
CATIS	127.0

**MIRI/MIRI (WBGR)
RWY 02
RNAV (GNSS)**

ASAKI 1A	AROVU 1A	BEVDO 1A
BIPAS 1A	DOXES 1A	DUGEV 1A
ESLAB 1A	EXUGO 1A	GODOM 1A



COMMUNICATION FAILURE:

- * SQUAWK 7600
- * IF UNDER PILOT NAVIGATION, MAINTAIN LAST ASSIGNED LEVEL FOR 3 MINUTES, IF NO ONWARD CLEARANCE IS RECEIVED SUBSEQUENTLY CLIMB TO COMPLY WITH SID
- * IF UNDER RADAR VECTORED, MAINTAIN VECTOR FOR 2 MINUTES
- * IF BELOW MSA, CLIMB TO MSA, THEN TRACK TO INTERCEPT CLEARED OR PREVIOUSLY ASSIGNED SID TO DESTINATION