

**STANDARD DEPARTURE CHART  
INSTRUMENT (SID) - ICAO**

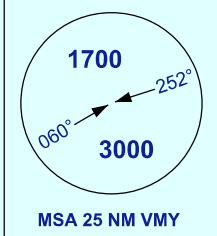
APP	129.9(P)
	122.7(S)
TWR	123.3
SMC	121.9
CATIS	127.0

**MIRI/MIRI (WBGR)  
RWY 02**

TRANSITION ALTITUDE  
11 000 FT

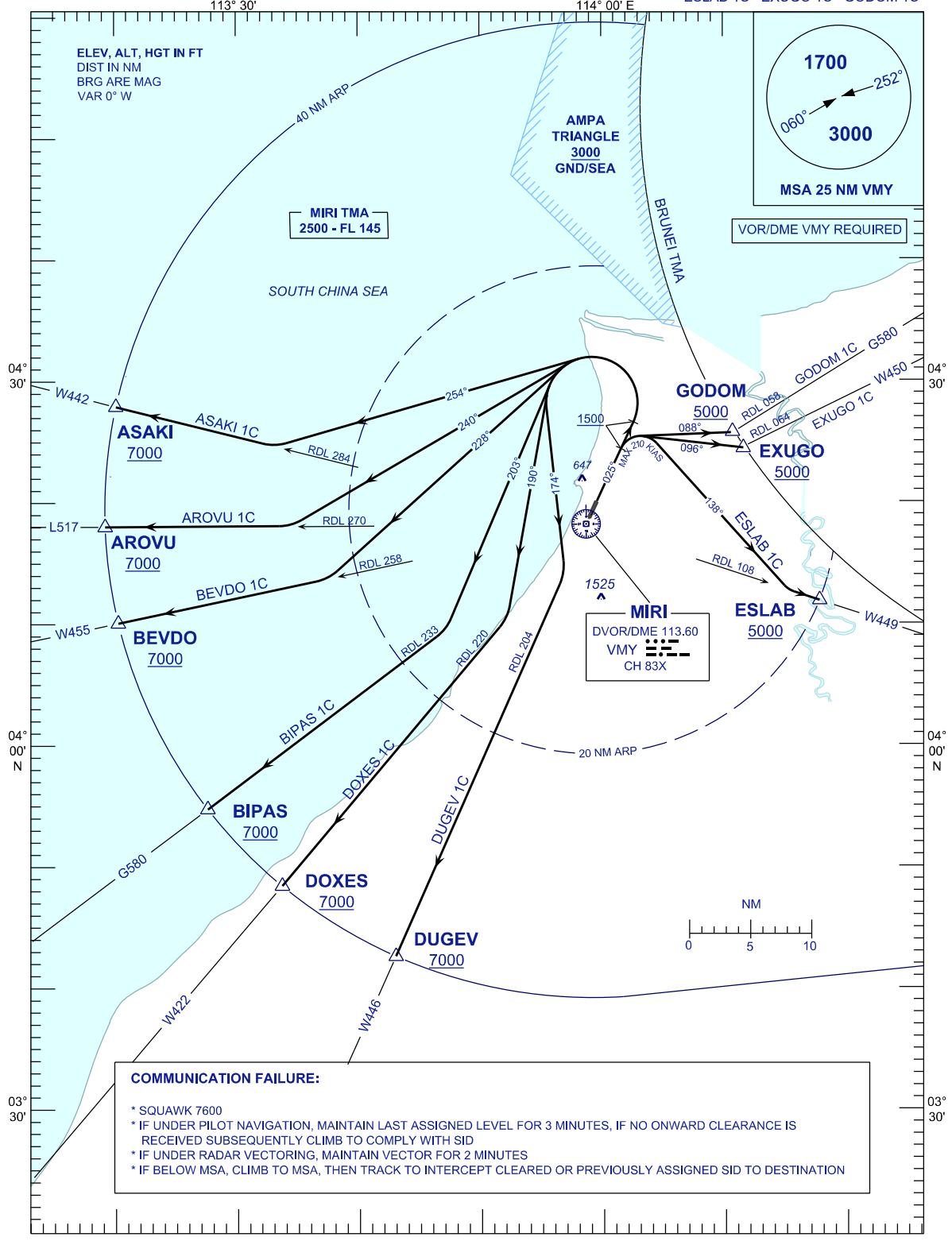
ASAHI 1C AROVU 1C BEVDO 1C  
BIPAS 1C DOXES 1C DUGEY 1C  
ESLAB 1C EXUGO 1C GODOM 1C

ELEV. ALT. HGT IN FT  
DIST IN NM  
BRG ARE MAG  
VAR 0° W

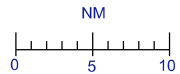


MIRI TMA  
2500 - FL 145

VOR/DME VMY REQUIRED



MIRI  
DVOR/DME 113.60  
VMY  
CH 83X



**COMMUNICATION FAILURE:**

- \* SQUAWK 7600
- \* IF UNDER PILOT NAVIGATION, MAINTAIN LAST ASSIGNED LEVEL FOR 3 MINUTES, IF NO ONWARD CLEARANCE IS RECEIVED SUBSEQUENTLY CLIMB TO COMPLY WITH SID
- \* IF UNDER RADAR VECTORED, MAINTAIN VECTOR FOR 2 MINUTES
- \* IF BELOW MSA, CLIMB TO MSA, THEN TRACK TO INTERCEPT CLEARED OR PREVIOUSLY ASSIGNED SID TO DESTINATION