

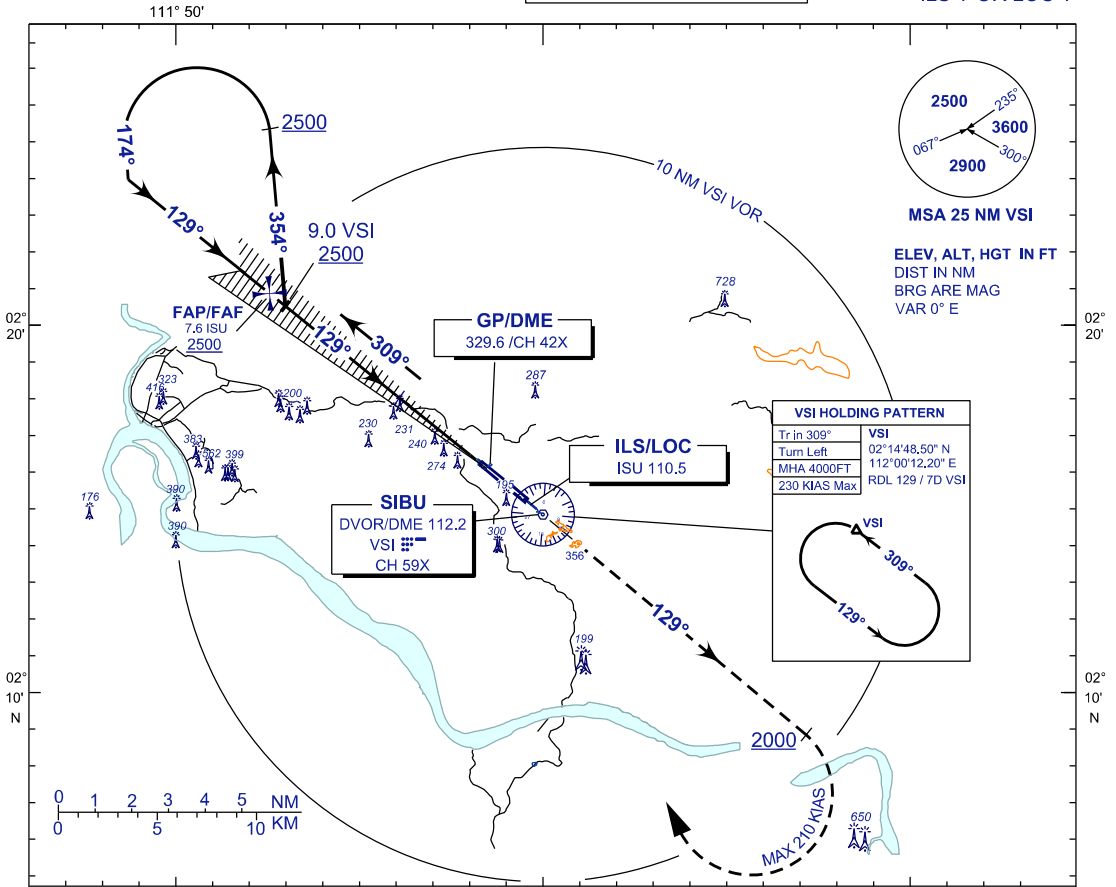
**INSTRUMENT
APPROACH
CHART - ICAO**

AERODROME ELEV 121 FT
HEIGHT RELATED TO
THR RWY13 - ELEV 81 FT

APP 122.6(P), 124.4 (S)
TWR 123.2
SMC 121.9
ATIS 127.65
EMERG 121.5

**SIBU/SIBU (WBG5)
RWY 13**

ILS Y OR LOC Y



MISSED APPROACH

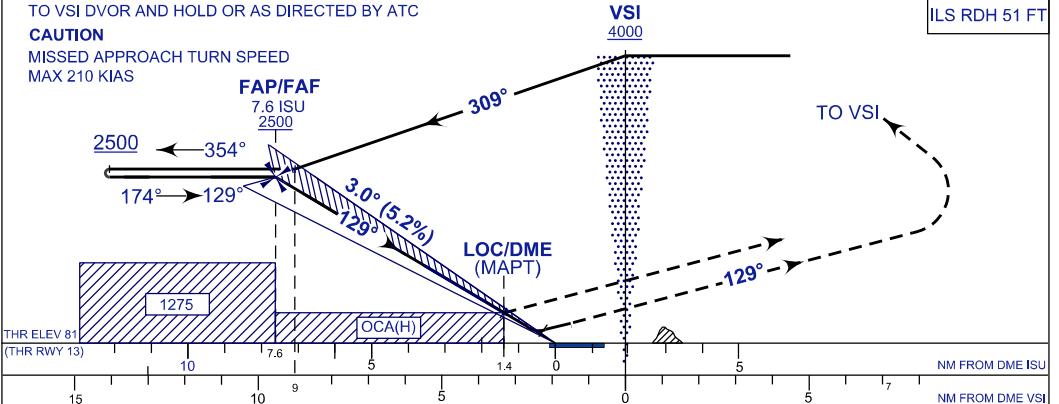
CLIMB 4000 FT ON TR 129°, ON PASSING 2000 FT TURN RIGHT TO VSI DVOR AND HOLD OR AS DIRECTED BY ATC

CAUTION

MISSED APPROACH TURN SPEED
MAX 210 KIAS

TRANSITION ALT 11 000

ILS RDH 51 FT



OCA (OCH)	A	B	C	D
ILS/DME (CAT I)	282 (201)	282 (201)	282 (201)	282 (201)
LOC/DME	530 (449) / 1.4 ISU			
CIRCLING	660 (579)		760 (679)	

DIST ISU DME	NM	7.6	6.2	5.2	4.2	3.2	2.2	1.2
DIST THR/RWY 13	NM	7.4	6.0	5.0	4.0	3.0	2.0	1.0
ALTITUDE	FT	2500	2042	1724	1406	1087	769	450

GS	KT	80	100	120	140	160	180
FAF - RWY13 (7.4NM)	MIN:SEC	5:35	4:28	3:43	3:11	2:47	2:29
RATE OF DESCEND (318.6 FT/NM)	FT/MIN	420	530	630	740	840	950

CHANGES : THR ELEV