

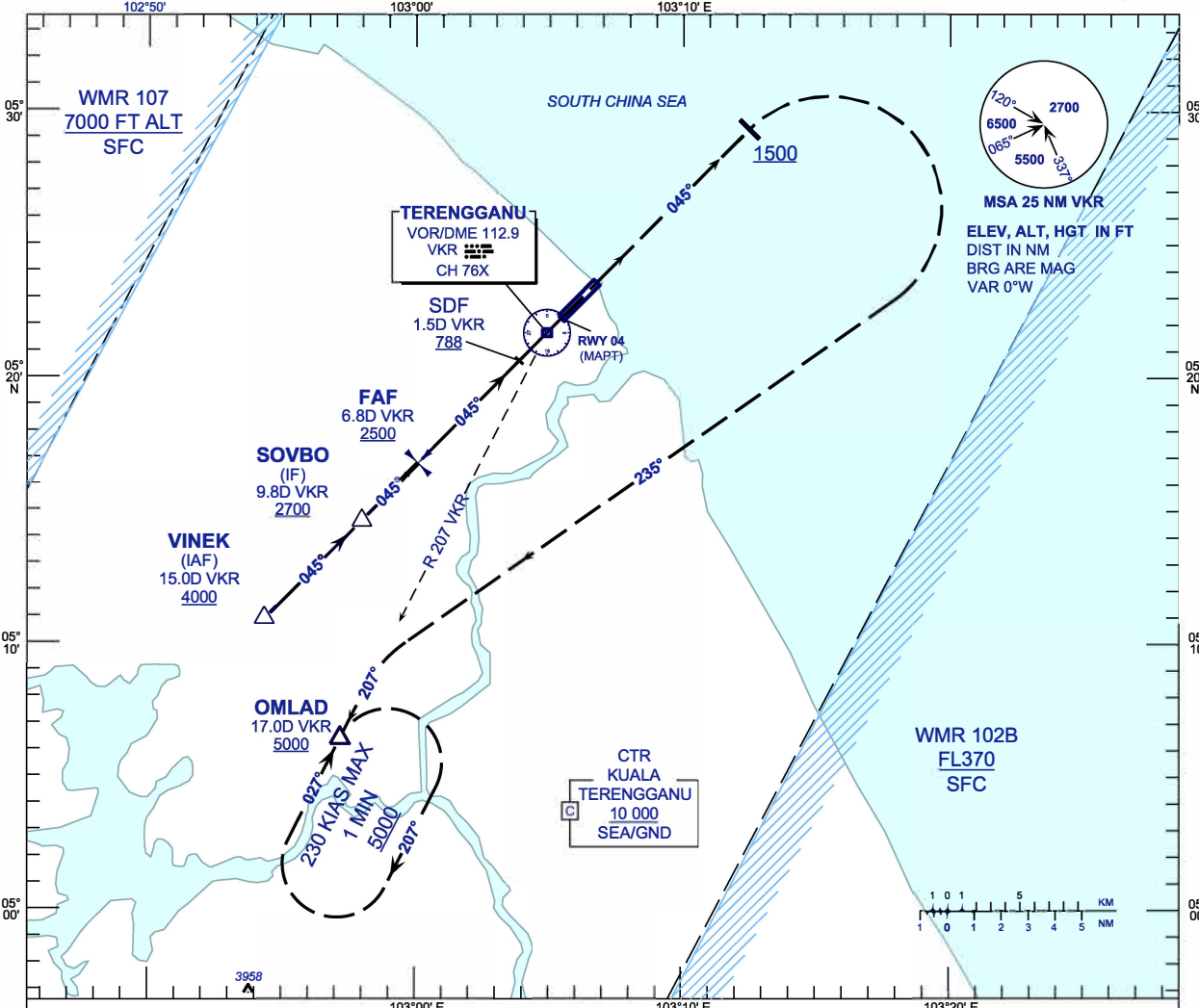
**INSTRUMENT
APPROACH
CHART - ICAO**

**AERODROME ELEV 21 FT
HEIGHT RELATED TO
THR RWY 04 - ELEV 20 FT**

| | |
|------|--------|
| APP | 123.6 |
| | 235.32 |
| TWR | 121.5 |
| SMC | 119.05 |
| ATIS | 121.6 |
| | 126.65 |

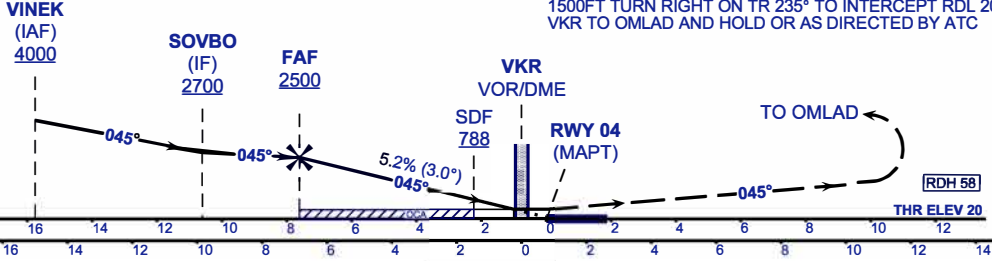
**KUALA TERENGGANU/
SULTAN MAHMUD (WMKN)
RWY 04**

VOR Z



**TRANSITION LEVEL FL130
TRANSITION ALT 11000**

MISSED APPROACH
AT MAPT CLIMB TO 5000FT ON TR 045°, ON PASSING 1500FT TURN RIGHT ON TR 235° TO INTERCEPT RDL 207° VKR TO OMLAD AND HOLD OR AS DIRECTED BY ATC



| | | | | |
|-----------|-------------|---|---|---|
| OCA (OCH) | A | B | C | D |
| VOR / DME | 390 / (370) | | | |

| | | | | | | | | | |
|-------------------------------|---------|------|------|------|------|------|------|-----|-----|
| DME VKR | NM | 6.8 | 5.8 | 4.8 | 3.8 | 2.8 | 1.8 | 0.8 | 0.2 |
| DIST THR/RWY04 | NM | 7.6 | 6.6 | 5.6 | 4.6 | 3.6 | 2.6 | 1.6 | 0.6 |
| ALTITUDE | FT | 2500 | 2178 | 1858 | 1538 | 1218 | 898 | 579 | 260 |
| GROUND SPEED (GS) | KNOTS | 80 | 100 | 120 | 140 | 160 | 180 | | |
| FAP - RWY04 (7.6 NM) | MIN:SEC | 5:42 | 4:34 | 3:48 | 3:16 | 2:51 | 2:32 | | |
| RATE OF DESCEND (318.4 FT/NM) | FT/MIN | 420 | 530 | 640 | 740 | 850 | 960 | | |

CHANGES : MISSED APPROACH INFORMATION.