

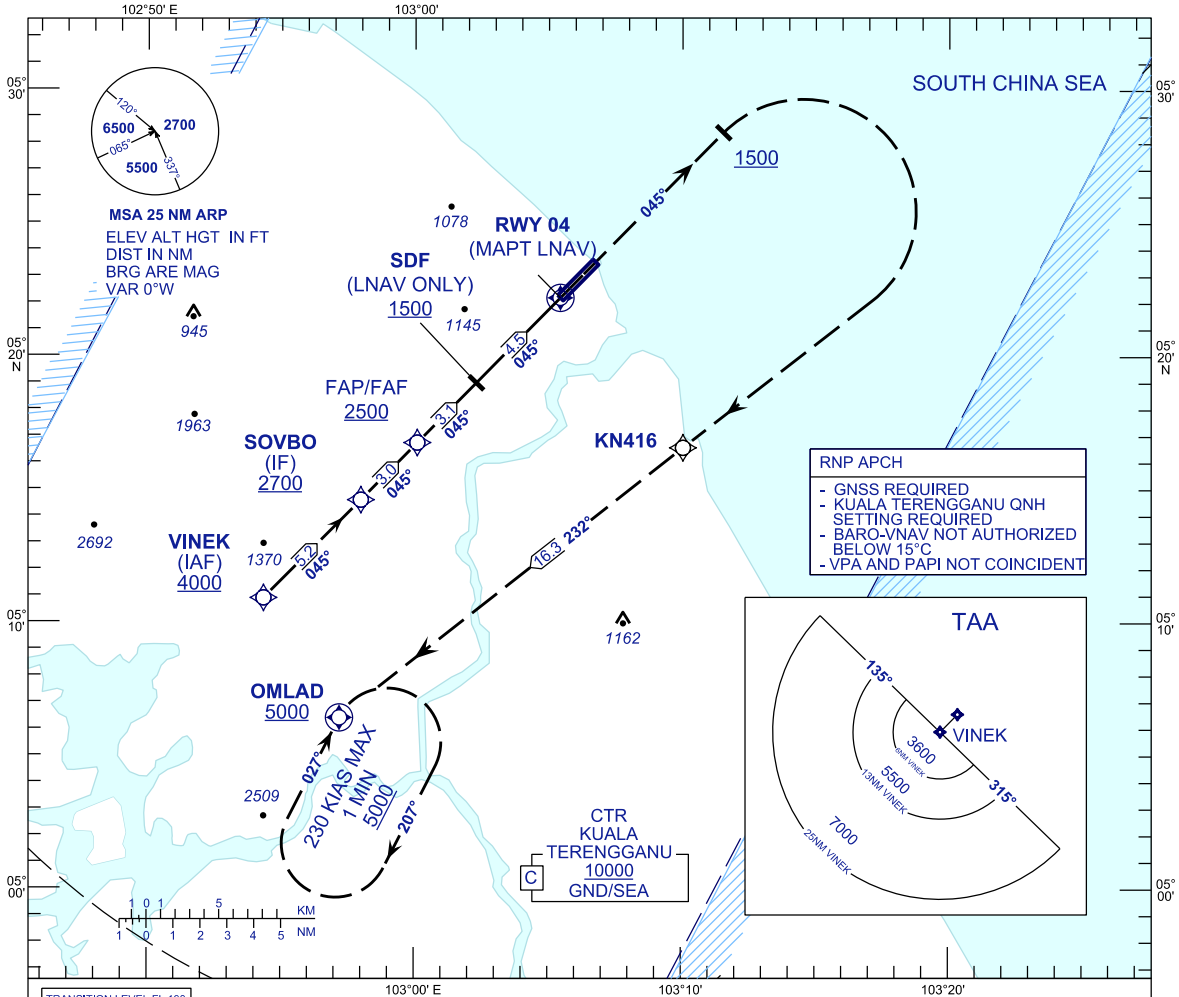
**INSTRUMENT
APPROACH
CHART - ICAO**

AERODROME ELEV 21 FT
HEIGHT RELATED TO
THR RWY 04 - ELEV 20 FT

APP	123.6
	235.32
	121.5
TWR	119.05
SMC	121.6
ATIS	126.65

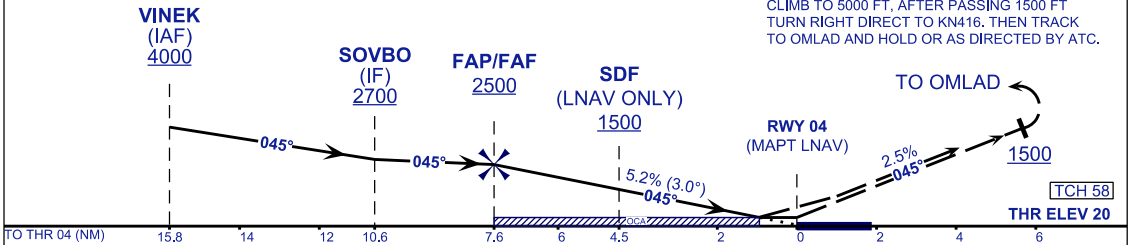
**KUALA TERENGGANU
SULTAN MAHMUD (WMKN)
RWY 04**

RNP Y



TRANSITION LEVEL FL 130
TRANSITION ALT 11000

MISSED APPROACH
CLIMB TO 5000 FT, AFTER PASSING 1500 FT
TURN RIGHT DIRECT TO KN416, THEN TRACK
TO OMLAD AND HOLD OR AS DIRECTED BY ATC.



OCA/H				
ACFT CAT.	A	B	C	D
STRAIGHT IN APPROACH	LNAV	374 (354)		
	LNAV/VNAV	374 (354)		

DISTANCE TO THRESHOLD (NM)	7.6	6.6	5.6	4.6	3.6	2.6	1.6	0.6
ALTITUDE (FT)	2500	2179	1861	1542	1224	905	587	269

GROUND SPEED (GS)	KTS	80	100	120	140	160	180
FAP - RWY04 (7.6 NM)	MIN:SEC	5:42	4:34	3:48	3:16	2:51	2:32
RATE OF DESCEND (318.4 FT/NM)	FT/MIN	420	530	640	740	850	960