

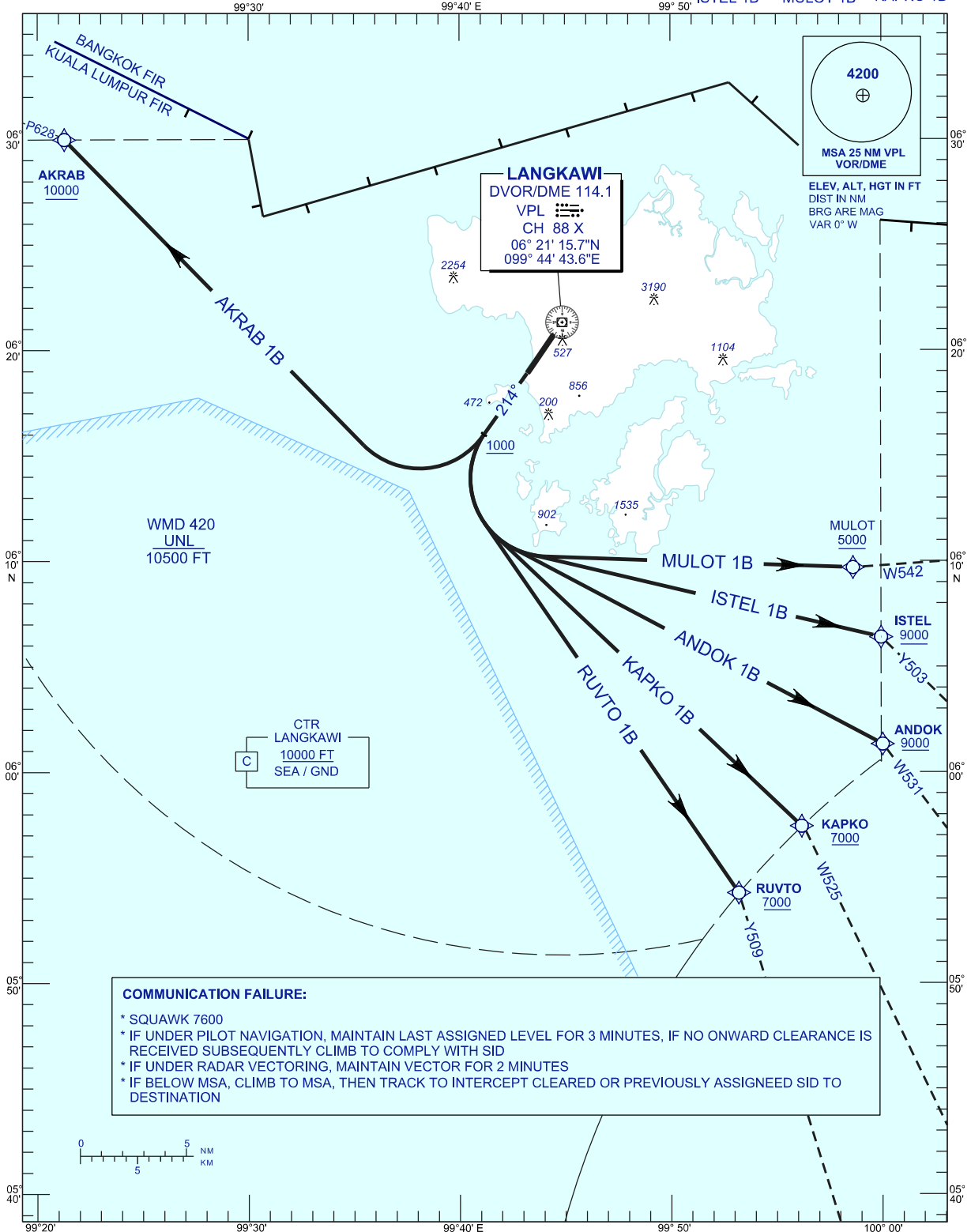
**STANDARD DEPARTURE CHART  
INSTRUMENT (SID) - ICAO**

TRANSITION ALTITUDE  
11000 FT

APP 119.4, 257.8  
TWR 118.5  
SMC 121.8  
ATIS 128.2

**LANGKAWI/LANGKAWI  
INTERNATIONAL AIRPORT (WMKL)  
RNAV (GNSS) RWY 21**

RUVTO 1B AKRAB 1B ANDOK 1B  
ISTEL 1B MULOT 1B KAPKO 1B



CHANGES : CHANGE COORDINATE FOR DVOR,  
MAGNETIC VARIATION VALUE