

**STANDARD DEPARTURE CHART  
INSTRUMENT (SID) - ICAO**

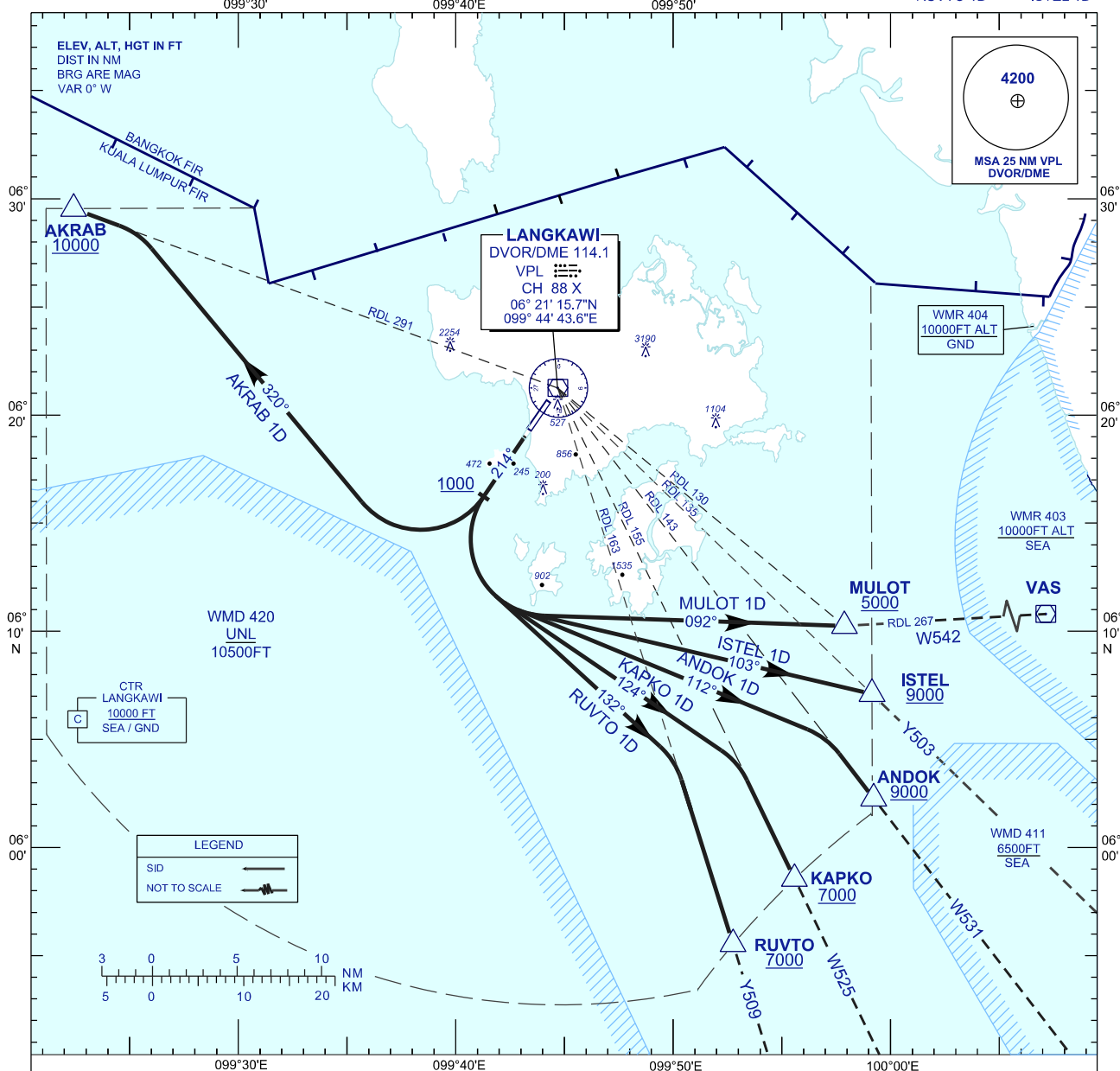
**LANGKAWI/LANGKAWI  
INTERNATIONAL AIRPORT (WMKL)  
RWY 21**

TRANSITION ALTITUDE  
11000 FT

APP 119.4, 257.8  
TWR 118.5  
SMC 121.8  
ATIS 128.2

KAPKO 1D  
ANDOK 1D  
RUVTO 1D

AKRAB 1D  
MULOT 1D  
ISTEL 1D



**COMMUNICATION FAILURE :**

- SQUAWK 7600
- IF UNDER PILOT NAVIGATION, MAINTAIN LAST ASSIGNED LEVEL FOR 3 MINUTES, IF NO ONWARD CLEARANCE IS RECEIVED. SUBSEQUENTLY CLIMB TO COMPLY WITH SID.
  - IF UNDER RADAR VECTORED : MAINTAIN VECTOR FOR 2 MINUTES, IF BELOW MSA, CLIMB TO MSA, THEN TRACK TO INTERCEPT CLEARED OR PREVIOUSLY ASSIGNED SID TO DESTINATION.

**CHANGES :** CHANGE COORDINATE FOR DVOR,  
RDL FROM VPL FOR ISTEL, RUVTO & AKRAB,  
RDL FROM VAS FOR MULOT,  
MAGNETIC VARIATION VALUE  
ADD TRACK 214°