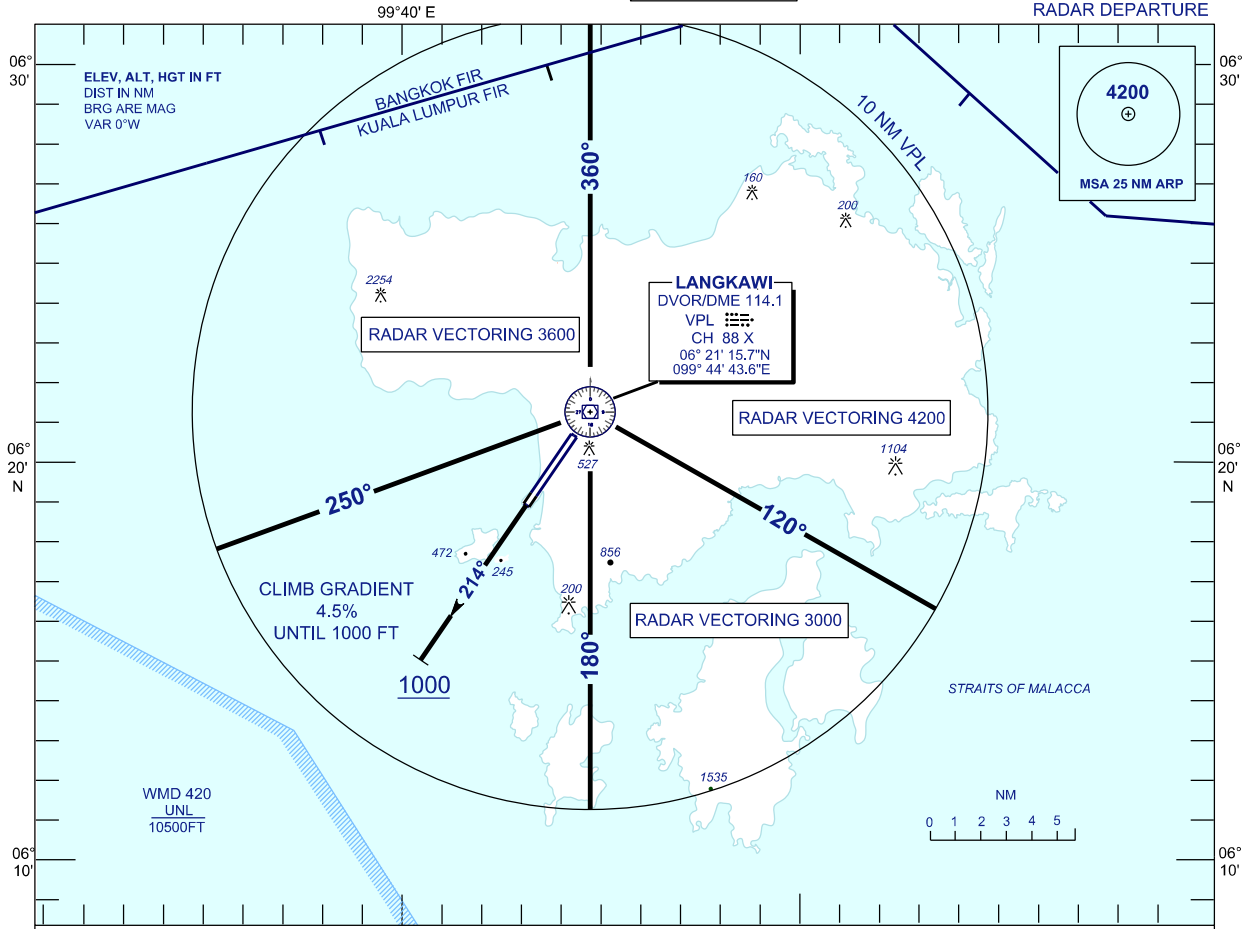


**STANDARD DEPARTURE CHART
INSTRUMENT (SID) - ICAO**

**LANGKAWI/LANGKAWI
INTERNATIONAL AIRPORT (WMKL)**

TRANSITION ALTITUDE
11000 FT

APP 119.4, 257.8
TWR 118.5
SMC 121.8
ATIS 128.2



**STANDARD RADAR DEPARTURE
LANGKAWI RADAR DEPARTURE**

RWY 21

CLIMB GRADIENT 4.5% UNTIL 1000 FT.
AFTER TAKE - OFF PROCEED ON TRACK 214° UNTIL PASSING 1000 FT, THEN FOLLOW THE ASSIGNED HEADING. CONTACT LANGKAWI APPROACH WHEN AIRBORNE.

	RATE OF CLIMB (FT/MIN)										
GROUND SPEED (KT)	130	140	150	160	170	180	200	220	240	260	280
GRADIENT 3.3%	434	468	501	535	568	602	668	735	802	869	936
GRADIENT 4.5%	592	638	684	730	775	820	910	1002	1094	1185	1276

COMMUNICATION FAILURE:

- * SQUAWK 7600
- * MAINTAIN ASSIGNED HEADING - CLIMB TO MSA OR AT LEAST LAST ASSIGNED LEVEL (IF HIGHER)
- * MAINTAIN MSA OR ASSIGNED LEVEL AS APPROPRIATE FOR 2 MINUTES, THEN CLIMB TO FLIGHT PLAN LEVEL AND INTERCEPT FLIGHT PLAN TRACK (AS AMENDED BY ATC IF APPLICABLE)