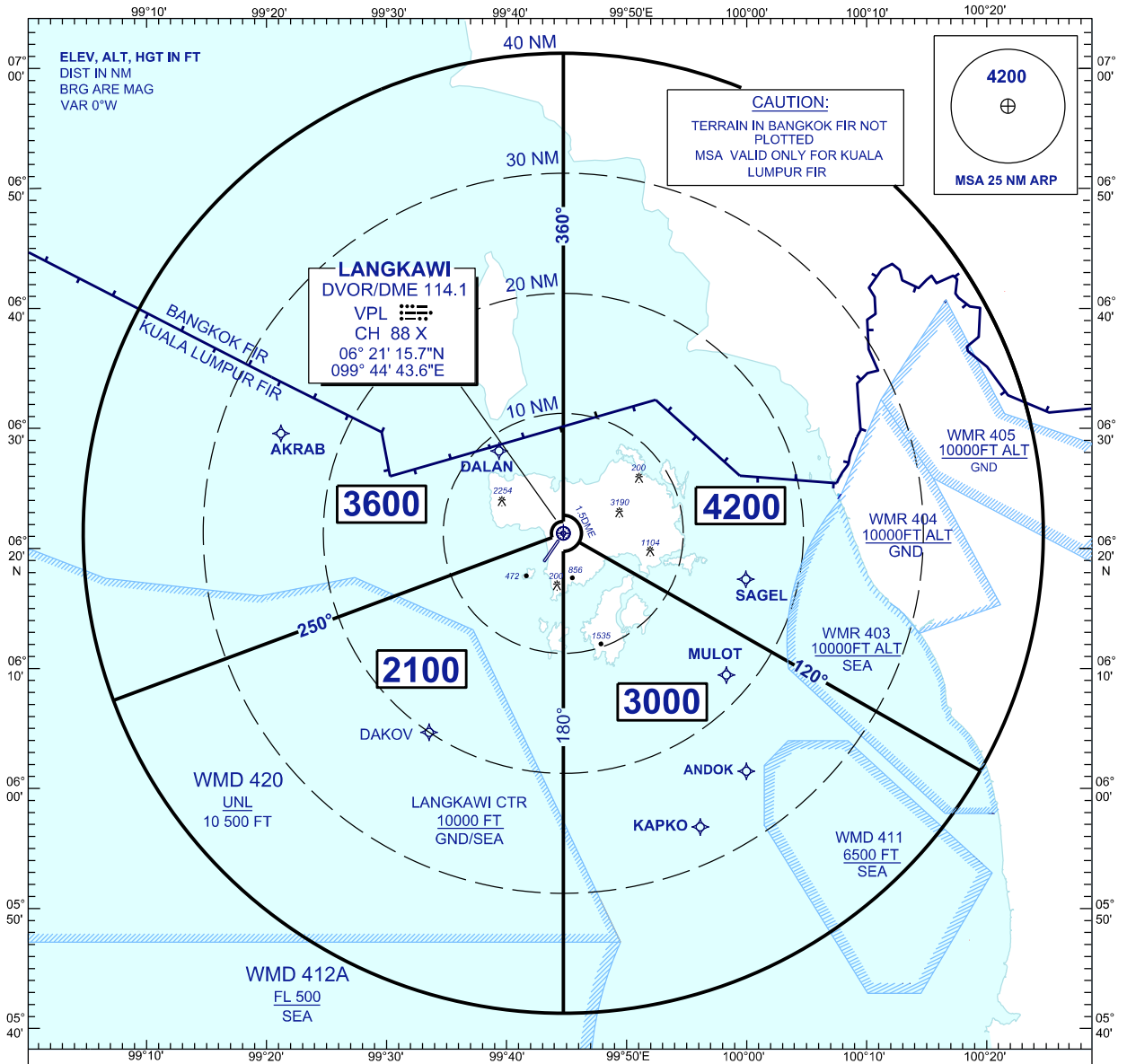


**ATC SURVEILLANCE MINIMUM  
ALTITUDE CHART - ICAO**

AERODROME ELEV 16 FT  
TRANSITION ALT 11,000 FT

APP 119.4  
257.8

**LANGKAWI / LANGKAWI  
INTERNATIONAL AIRPORT (WMKL)**



**NOTE:**

1. BEARING AND ARC FROM VPL VOR/DME
2. CHART ONLY TO BE USED FOR CROSS CHECKING OF ALTITUDE WHILE UNDER RADAR CONTROL

**COMMUNICATION FAILURE:**

1. SQUAWK 7600
2. IF IN VMC, CONTINUE VISUALLY AND LAND
3. IF IN IMC, MAINTAIN LAST ASSIGNED LEVEL OR 4200 FT WHICHEVER IS HIGHER, PROCEED DIRECT TO VPL DVOR/DME
4. EXECUTE STANDARD COMM FAILURE FROM OVERHEAD VPL