

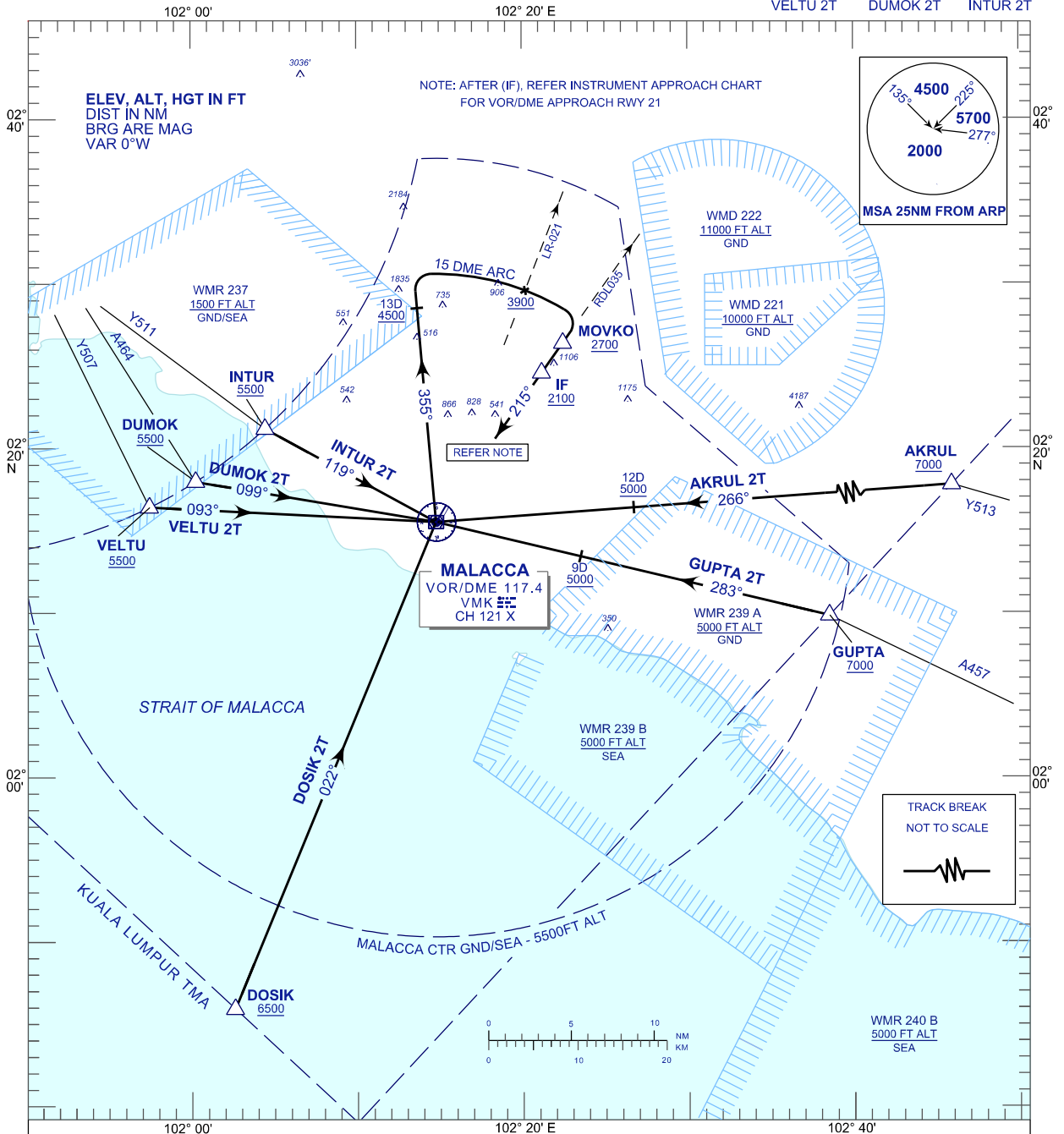
STANDARD ARRIVAL CHART INSTRUMENT (STAR) - ICAO

TRANSITION ALTITUDE
11 000 FT

TWR 118.00
SMC 121.60
ATIS 127.45

MALACCA/MALACCA (WMKM) ARRIVAL (15 DME ARC) RWY21

AKRUL 2T GUPTA 2T DOSIK 2T
VELTU 2T DUMOK 2T INTUR 2T



COMMUNICATION FAILURE :

SQUAWK 7600

- IF UNDER PILOT NAVIGATION, MAINTAIN LAST ASSIGNED LEVEL FOR 3 MINUTES, IF NO ONWARD CLEARANCE IS RECEIVED. SUBSEQUENTLY CLIMB/DESCEND TO COMPLY WITH STAR AND LAND.
- IF UNDER RADAR VECTORED : MAINTAIN VECTOR FOR 1 MINUTES, IF BELOW MSA, CLIMB TO MSA, THEN TRACK TO INTERCEPT CLEARED OR PREVIOUSLY ASSIGNED STAR AND LAND.